

# City of Prince George

## HISTORY SHEET

PID: 029-310-792

Scale: 1:500

Legal: LOT 55

D.L.: 2003

PLAN: EPP31288

Address: 3579 PARKVIEW CRES

Sanitary Connection:# SIZE: 100mmØ MATERIAL: PVC INV. AT R 709.45m CONNECTED

Water Connection:# SIZE: 19mmØ MATERIAL: Copper INV. AT R 709.45m

Storm Connection:# SIZE: 100mmØ MATERIAL: PVC INV. AT R 709.45m CONNECTED

Cash Receipt No's: WATER SANITARY STORM

CURB FROM PROPERTY LINE 5m PAVEMENT WIDTH 10m

HYDRO 75mm DB2 U/G CONNECTION ✓

TELEPHONE 100mm DB2 U/G CONNECTION ✓

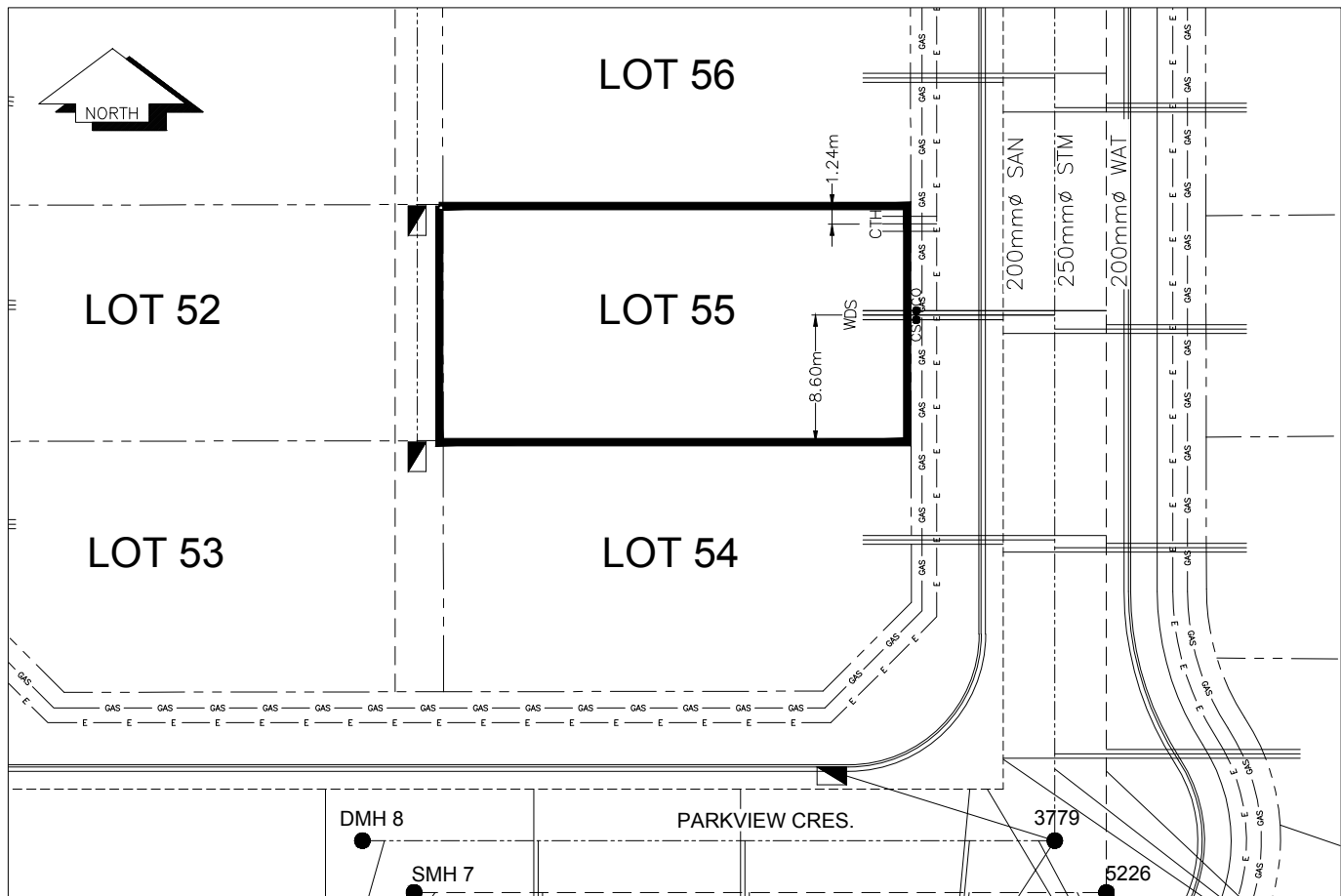
GAS 42 PROP/P.E.

Information Sheets: REF. DWGS. L&M ENGINEERING LTD. JOB. 1273-17-04 DWGS.

Comments: CS CURB STOP CO CLEAN OUT SDW WATER SERVICE STORM SERVICE SANITARY SERVICE TCH HYDRO SERVICE CABLE SERVICE TELECOMMUNICATIONS GAS ELECTRICAL

THE INFORMATION CONTAINED HEREIN IS FOR INTERNAL USE ONLY.

NOT TO BE RELIED UPON UNLESS CONFIRMED BY THE SITE INSPECTION AND/OR INVESTIGATION



| SANITARY, STORM & WATER SERVICE INVERTS   | SANITARY | WATER   | STORM   |
|---|----------|---------|---------|
| 1. Distance from San. M.H. <u>5226</u> toward San. M.H. <u>5227</u> to lot service connection point is: | 39.89m   | N/A     | N/A     |
| 1a.Distance from Stm. M.H. <u>3779</u> toward Stm. M.H. <u>3781</u> to lot service connection point is: | N/A      | N/A     | 35.73m  |
| 2. Main Size at connection point is   | 200mmØ   | 200mmØ  | 250mmØ  |
| 3. Invert of service at main conn. stub point is  | 709.25m  | 708.06m | 708.96m |
| 4. Invert at service end is   | 709.80m  | 709.92m | 709.79m |
| 5. Cover at property line in meters   | 2.55m    | 2.63m   | 2.55m   |
| 6. Survey Date: MAY 2012 Book Ref.:1273-14-04 By:L&M ENGINEERING LTD                                    |          |         |         |
|   |          |         |         |
|   |          |         |         |
|   |          |         |         |
|   |          |         |         |
|   |          |         |         |
|   |          |         |         |
|   |          |         |         |

### SANITARY HISTORY:

DATE INSTALLED: JULY 2012

INSTALLED BY: SUNLAND UTILITIES LTD

SAG IN SANITARY SERVICE WAS REPAIRED BY JOE ROBERTS CONSTRUCTION LTD. APRIL 2018

### WATER HISTORY:

DATE INSTALLED: JULY 2012

INSTALLED BY: SUNLAND UTILITIES LTD.

### STORM HISTORY:

DATE INSTALLED: JULY 2012

INSTALLED BY: SUNLAND UTILITIES LTD.

SAG IN STORM SERVICE WAS REPAIRED BY JOE ROBERTS CONSTRUCTION LTD. APRIL 2018