

City of Prince George

HISTORY SHEET

PID: **029-310-741**

Scale: 1:500

Legal: LOT 50

D.L.: 2003

PLAN: EPP31288

Address: **4912 PARKSIDE DR**

Sanitary Connection:# SIZE: 100mmØ MATERIAL: PVC INV. AT R 712.14m CONNECTED

Water Connection:# SIZE: 19mmØ MATERIAL: Copper INV. AT R 712.17m

Storm Connection:# SIZE: 100mmØ MATERIAL: PVC INV. AT R 712.18m CONNECTED

Cash Receipt No's: WATER SANITARY STORM

CURB FROM PROPERTY LINE 5m PAVEMENT WIDTH 10m

HYDRO 75mm DB2 U/G CONNECTION ✓

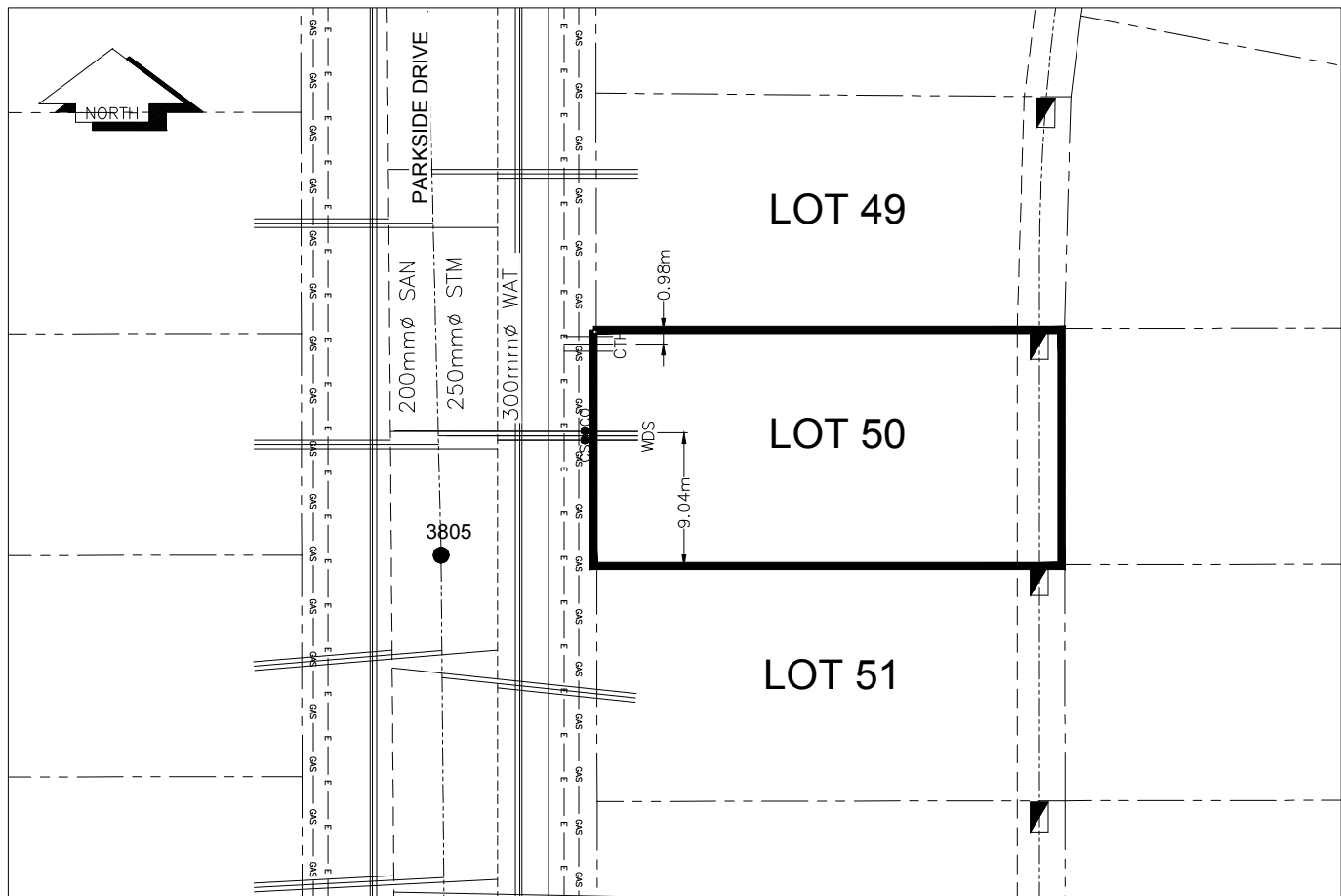
TELEPHONE 100mm DB2 U/G CONNECTION ✓

GAS 42 PROP/P.E.

Information Sheets: REF. DWGS. L&M ENGINEERING LTD. JOB. 1273-17-04 DWGS.

Comments: CS CURB STOP SDW WATER SERVICE TOCH HYDRO SERVICE
CO CLEAN OUT STORM SERVICE CABLE SERVICE
SANITARY SERVICE TELECOMMUNICATIONS GAS
ELECTRICAL

THE INFORMATION CONTAINED HEREIN IS FOR INTERNAL USE ONLY.
NOT TO BE RELIED UPON UNLESS CONFIRMED BY THE SITE INSPECTION AND/OR INVESTIGATION



| SANITARY, STORM & WATER SERVICE INVERTS | SANITARY | WATER | STORM |
|---|----------|---------|---------|
| 1. Distance from San. M.H. <u>5223</u> toward San. M.H. <u>5225</u> to lot service connection point is: | 32.31m | N/A | N/A |
| 1a.Distance from Stm. M.H. <u>3780</u> toward Stm. M.H. <u>3805</u> to lot service connection point is: | N/A | N/A | 35.61m |
| 2. Main Size at connection point is | 200mmØ | 300mmØ | 250mmØ |
| 3. Invert of service at main conn. stub point is | 711.50m | 711.02m | 711.64m |
| 4. Invert at service end is | 712.20m | 712.23m | 712.24m |
| 5. Cover at property line in meters | 3.45m | 3.50m | 3.41m |
| 6. Survey Date: MAY 2012 Book Ref.:1273-14-04 By:L&M ENGINEERING LTD | | | |
| | | | |
| | | | |
| | | | |
| | | | |
| | | | |
| | | | |
| | | | |

SANITARY HISTORY:

DATE INSTALLED: JULY 2012

INSTALLED BY: SUNLAND UTILITIES LTD

SAG IN SANITARY SERVICE WAS REPAIRED BY JOE ROBERTS CONSTRUCTION LTD. AUGUST 2017

WATER HISTORY:

DATE INSTALLED: JULY 2012

INSTALLED BY: SUNLAND UTILITIES LTD.

STORM HISTORY:

DATE INSTALLED: JULY 2012

INSTALLED BY: SUNLAND UTILITIES LTD.

SAG IN STORM SERVICE WAS REPAIRED BY JOE ROBERTS CONSTRUCTION LTD. AUGUST 2017