

City of Prince George

HISTORY SHEET

PID: 029-310-431

Scale: 1:500

Legal: LOT 19

D.L.: 2003

PLAN: EPP31288

Address: 3951 PARKVIEW CRES

Sanitary Connection:#	SIZE: 100mmØ	MATERIAL: PVC	INV. AT R 712.58m	CONNECTED
-----------------------	--------------	---------------	-------------------	-----------

Water Connection:#	SIZE: 19mmØ	MATERIAL: Copper	INV. AT R 712.47m	
--------------------	-------------	------------------	-------------------	--

Storm Connection:#	SIZE: 100mmØ	MATERIAL: PVC	INV. AT R 712.51m	CONNECTED
--------------------	--------------	---------------	-------------------	-----------

Cash Receipt No's:	WATER	SANITARY	STORM
--------------------	-------	----------	-------

CURB FROM PROPERTY LINE	5m	PAVEMENT WIDTH	10m
-------------------------	----	----------------	-----

HYDRO	75mm DB2	U/G CONNECTION	✓
-------	----------	----------------	---

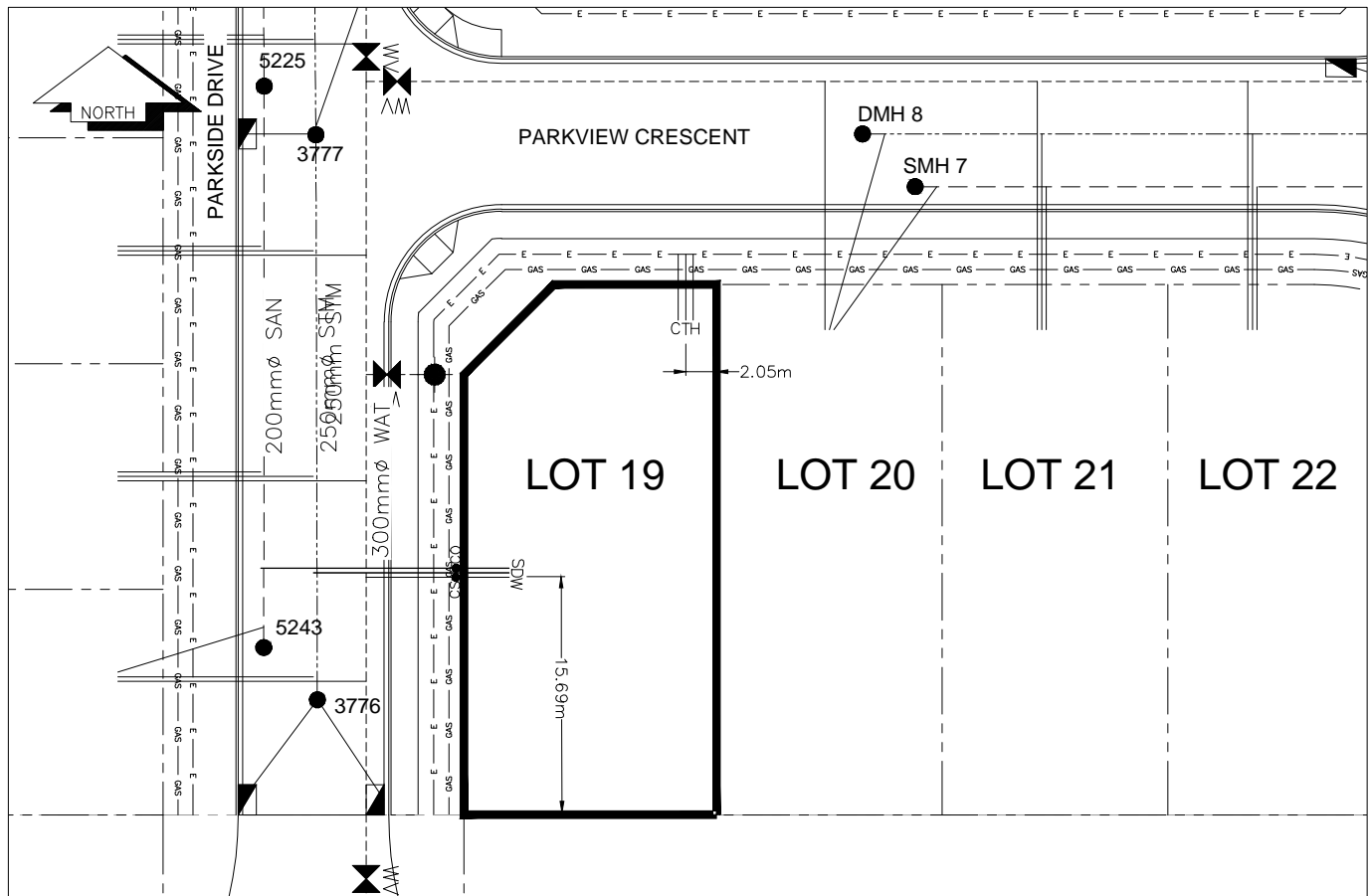
TELEPHONE	100mm DB2	U/G CONNECTION	✓
-----------	-----------	----------------	---

GAS	42 PROP/P.E.		
-----	--------------	--	--

Information Sheets: REF. DWGS. L&M ENGINEERING LTD. JOB. 1273-17-04 DWGS.

Comments: CS CURB STOP CO CLEAN OUT SDW WATER SERVICE STORM SERVICE SANITARY SERVICE CTH HYDRO SERVICE CABLE SERVICE TELECOMMUNICATIONS GAS ELECTRICAL

THE INFORMATION CONTAINED HEREIN IS FOR INTERNAL USE ONLY.
NOT TO BE RELIED UPON UNLESS CONFIRMED BY THE SITE INSPECTION AND/OR INVESTIGATION



SANITARY, STORM & WATER SERVICE INVERTS	SANITARY	WATER	STORM
1. Distance from San. M.H. <u>5225</u> toward San. M.H. <u>5243</u> to lot service connection point is:	30.85m	N/A	N/A
1a.Distance from Stm. M.H. <u>3777</u> toward Stm. M.H. <u>3776</u> to lot service connection point is:	N/A	N/A	28.34m
2. Main Size at connection point is	200mmØ	300mmØ	250mmØ
3. Invert of service at main conn. stub point is	712.31m	711.67m	712.21m
4. Invert at service end is	712.64m	712.53m	712.57m
5. Cover at property line in meters	2.83m	3.02m	2.90m
6. Survey Date: MAY 2012 Book Ref.:1273-14-04 By:L&M ENGINEERING LTD			

SANITARY HISTORY:

DATE INSTALLED: JULY 2012

INSTALLED BY: SUNLAND UTILITIES LTD

WATER HISTORY:

DATE INSTALLED: JULY 2012

INSTALLED BY: SUNLAND UTILITIES LTD.

STORM HISTORY:

DATE INSTALLED: JULY 2012

INSTALLED BY: SUNLAND UTILITIES LTD.