

City of Prince George

HISTORY SHEET

PID: **029-310-393**

Scale: 1:500

Legal: LOT 15

D.L.: 2003

PLAN: EPP31288

Address: **4995 PARKSIDE DR**

Sanitary Connection:#	SIZE: 100mmØ	MATERIAL: PVC	INV. AT \mathbb{R} 713.27m	CONNECTED
-----------------------	--------------	---------------	------------------------------	-----------

Water Connection:#	SIZE: 19mmØ	MATERIAL: Copper	INV. AT \mathbb{R} 713.21m	
--------------------	-------------	------------------	------------------------------	--

Storm Connection:#	SIZE: 100mmØ	MATERIAL: PVC	INV. AT \mathbb{R} 713.25m	CONNECTED
--------------------	--------------	---------------	------------------------------	-----------

Cash Receipt No's:	WATER	SANITARY	STORM
--------------------	-------	----------	-------

CURB FROM PROPERTY LINE	5m	PAVEMENT WIDTH	10m
-------------------------	----	----------------	-----

HYDRO	75mm DB2	U/G CONNECTION	✓
-------	----------	----------------	---

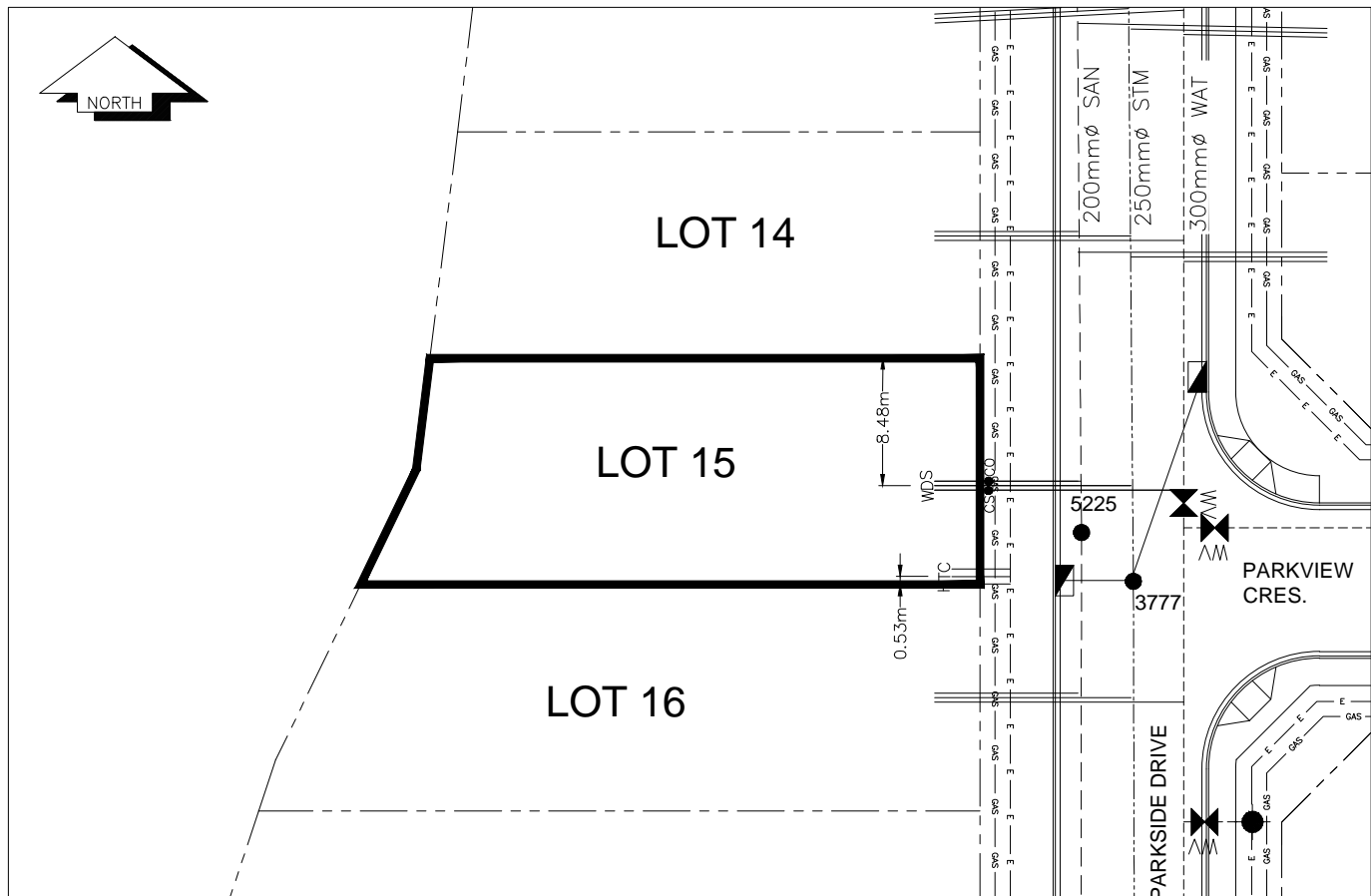
TELEPHONE	100mm DB2	U/G CONNECTION	✓
-----------	-----------	----------------	---

GAS	42 PROP/P.E.
-----	--------------

Information Sheets: REF. DWGS. L&M ENGINEERING LTD. JOB. 1273-17-04 DWGS.

Comments: CS CURB STOP CO CLEAN OUT SDW WATER SERVICE SDW STORM SERVICE SDW SANITARY SERVICE TCH HYDRO SERVICE TCH CABLE SERVICE TCH TELECOMMUNICATIONS GAS ELECTRICAL

THE INFORMATION CONTAINED HEREIN IS FOR INTERNAL USE ONLY.
NOT TO BE RELIED UPON UNLESS CONFIRMED BY THE SITE INSPECTION AND/OR INVESTIGATION



SANITARY, STORM & WATER SERVICE INVERTS	SANITARY	WATER	STORM
1. Distance from San. M.H. <u>5223</u> toward San. M.H. <u>5225</u> to lot service connection point is:	94.04m	N/A	N/A
1a.Distance from Stm. M.H. <u>3805</u> toward Stm. M.H. <u>3777</u> to lot service connection point is:	N/A	N/A	51.66m
2. Main Size at connection point is	200mmØ	300mmØ	250mmØ
3. Invert of service at main conn. stub point is	712.01m	711.63m	711.90m
4. Invert at service end is	713.33m	713.27m	713.31m
5. Cover at property line in meters	2.34m	2.48m	2.36m
6. Survey Date: MAY 2012 Book Ref.:1273-14-04 By:L&M ENGINEERING LTD			

SANITARY HISTORY:

DATE INSTALLED: JULY 2012

INSTALLED BY: SUNLAND UTILITIES LTD

WATER HISTORY:

DATE INSTALLED: JULY 2012

INSTALLED BY: SUNLAND UTILITIES LTD.

STORM HISTORY:

DATE INSTALLED: JULY 2012

INSTALLED BY: SUNLAND UTILITIES LTD.