

# City of Prince George

## HISTORY SHEET

PID: **029-310-385**

Scale: 1:500

Legal: LOT 14

D.L.: 2003

PLAN: EPP31288

Address: **4971 PARKSIDE DR**

Sanitary Connection:# SIZE: 100mmØ MATERIAL: PVC INV. AT  $\text{RL}$  712.92m CONNECTED

Water Connection:# SIZE: 19mmØ MATERIAL: Copper INV. AT  $\text{RL}$  712.88m

Storm Connection:# SIZE: 100mmØ MATERIAL: PVC INV. AT  $\text{RL}$  712.90m CONNECTED

Cash Receipt No's: WATER SANITARY STORM

CURB FROM PROPERTY LINE 5m PAVEMENT WIDTH 10m

HYDRO 75mm DB2 U/G CONNECTION ✓

TELEPHONE 100mm DB2 U/G CONNECTION ✓

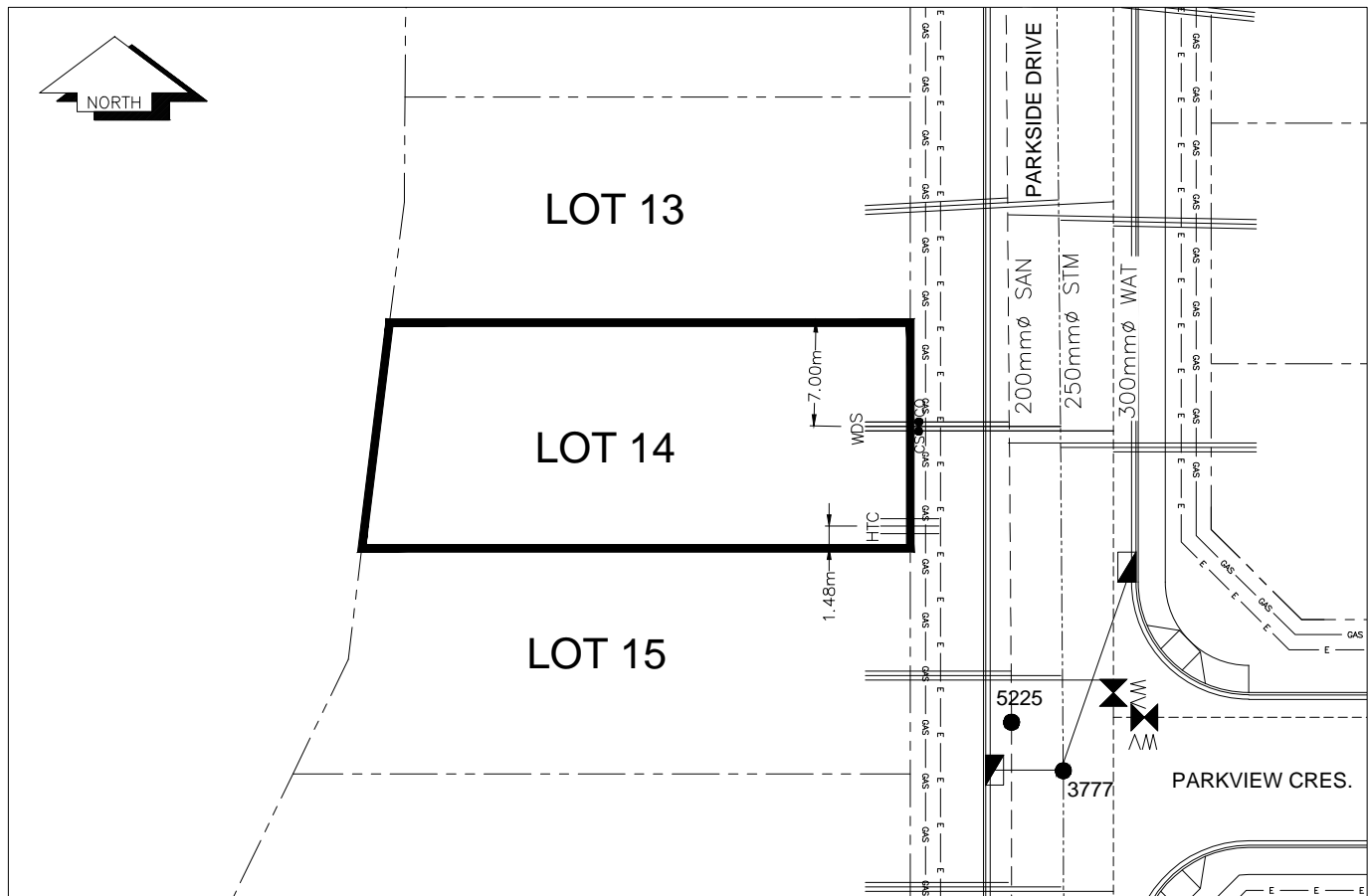
GAS 42 PROP/P.E.

Information Sheets: REF. DWGS. L&M ENGINEERING LTD. JOB. 1273-17-04 DWGS.

Comments: CS CURB STOP CO CLEAN OUT SDW WATER SERVICE STORM SERVICE SANITARY SERVICE TCH HYDRO SERVICE CABLE SERVICE TELECOMMUNICATIONS GAS ELECTRICAL

THE INFORMATION CONTAINED HEREIN IS FOR INTERNAL USE ONLY.

NOT TO BE RELIED UPON UNLESS CONFIRMED BY THE SITE INSPECTION AND/OR INVESTIGATION



SANITARY, STORM & WATER SERVICE INVERTS	SANITARY	WATER	STORM
1. Distance from San. M.H. <u>5223</u> toward San. M.H. <u>5225</u> to lot service connection point is:	78.55m	N/A	N/A
1a.Distance from Stm. M.H. <u>3805</u> toward Stm. M.H. <u>3777</u> to lot service connection point is:	N/A	N/A	36.63m
2. Main Size at connection point is	200mmØ	300mmØ	250mmØ
3. Invert of service at main conn. stub point is	711.92m	711.35m	711.90m
4. Invert at service end is	712.98m	712.94m	712.96m
5. Cover at property line in meters	2.57m	2.69m	2.59m
6. Survey Date: MAY 2012 Book Ref.:1273-14-04 By:L&M ENGINEERING LTD			

### SANITARY HISTORY:

DATE INSTALLED: JULY 2012

INSTALLED BY: SUNLAND UTILITIES LTD

### WATER HISTORY:

DATE INSTALLED: JULY 2012

INSTALLED BY: SUNLAND UTILITIES LTD.

### STORM HISTORY:

DATE INSTALLED: JULY 2012

INSTALLED BY: SUNLAND UTILITIES LTD.