

# City of Prince George

## HISTORY SHEET

PID: **029-310-253**

Scale: 1:500

Legal: LOT 1

D.L.: 2003

PLAN: EPP31288

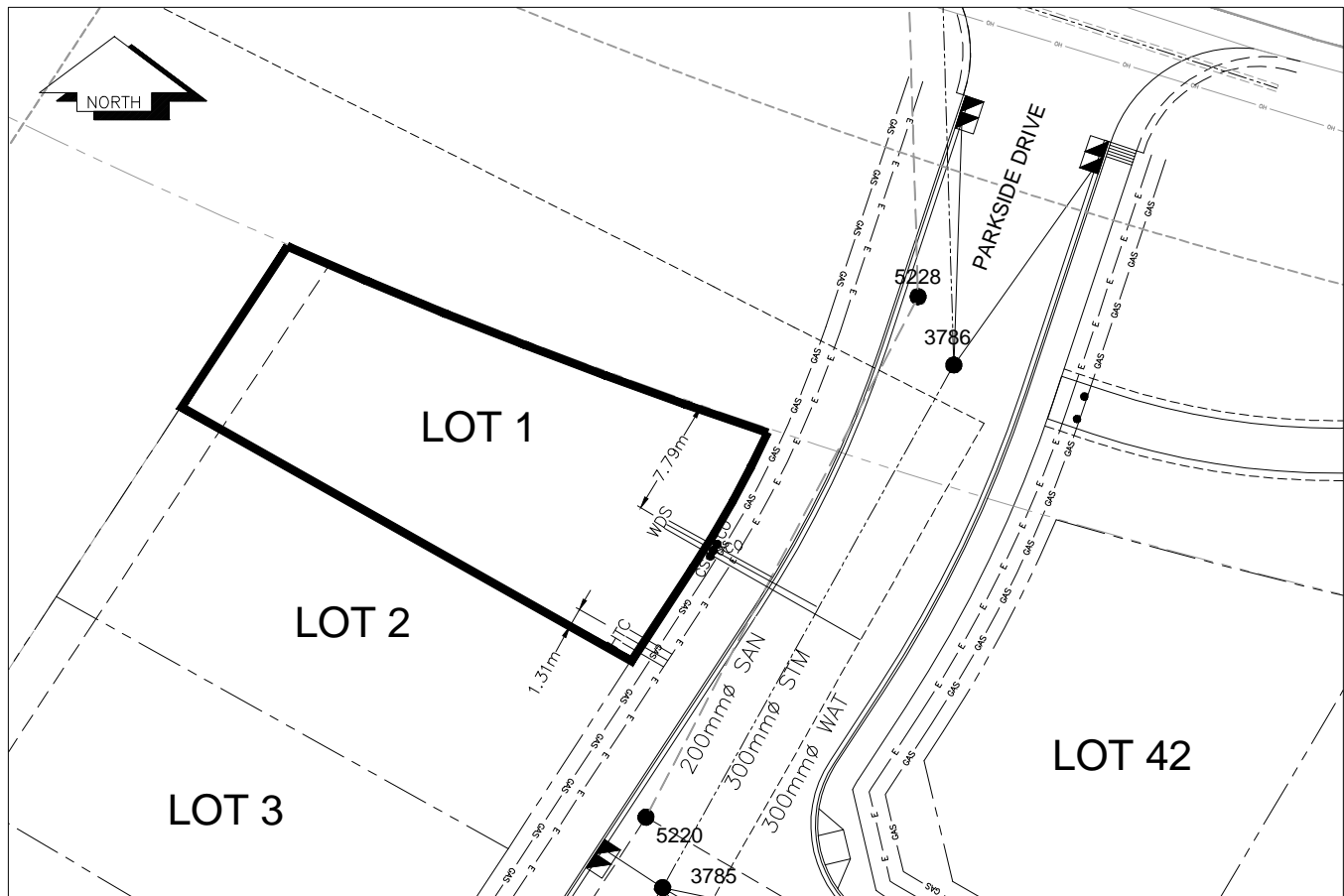
Address: **4679 PARKSIDE DR**

Sanitary Connection:#	SIZE: 100mmØ	MATERIAL: PVC	INV. AT R 704.74m	CONNECTED
Water Connection:#	SIZE: 19mmØ	MATERIAL: Copper	INV. AT R 704.68m	
Storm Connection:#	SIZE: 100mmØ	MATERIAL: PVC	INV. AT R 705.11m	CONNECTED
Cash Receipt No's:	WATER	SANITARY	STORM	
CURB FROM PROPERTY LINE	5m		PAVEMENT WIDTH	10m
HYDRO	75mm DB2	U/G CONNECTION	✓	
TELEPHONE	100mm DB2	U/G CONNECTION	✓	
GAS	42 PROP/P.E.			

Information Sheets: REF. DWGS. L&M ENGINEERING LTD. JOB. 1273-17-04 DWGS.

Comments: CS CURB STOP CO CLEAN OUT SDW WATER SERVICE SDH STORM SERVICE SDH SANITARY SERVICE SDH HYDRO SERVICE SDH CABLE SERVICE SDH TELECOMMUNICATIONS GAS ELECTRICAL

THE INFORMATION CONTAINED HEREIN IS FOR INTERNAL USE ONLY.  
NOT TO BE RELIED UPON UNLESS CONFIRMED BY THE SITE INSPECTION AND/OR INVESTIGATION



SANITARY, STORM & WATER SERVICE INVERTS	SANITARY	WATER	STORM
1. Distance from San. M.H. <u>5228</u> toward San. M.H. <u>5220</u> to lot service connection point is:	20.24m	N/A	N/A
1a.Distance from Stm. M.H. <u>3786</u> toward Stm. M.H. <u>3785</u> to lot service connection point is:	N/A	N/A	17.73m
2. Main Size at connection point is	200mmØ	300mmØ	300mmØ
3. Invert of service at main conn. stub point is	704.41m	704.12m	704.87m
4. Invert at service end is	704.79m	704.86m	705.18m
5. Cover at property line in meters	2.18m	2.33m	1.82m
6. Survey Date: MAY 2012 Book Ref.:1273-14-04 By:L&M ENGINEERING LTD			

SANITARY HISTORY:

DATE INSTALLED: JULY 2012

INSTALLED BY: SUNLAND UTILITIES LTD

WATER HISTORY:

DATE INSTALLED: JULY 2012

INSTALLED BY: SUNLAND UTILITIES LTD.

STORM HISTORY:

DATE INSTALLED: JULY 2012

INSTALLED BY: SUNLAND UTILITIES LTD.