



City of Prince George
History Sheet

| | |
|--------|-----------|
| PID: | 029246083 |
| SD/MU: | |
| WO: | |

Civic Address: 2925 Charella Dr

Legal Description: Lot: 2 District Lot: 9261 Plan: EPP22518

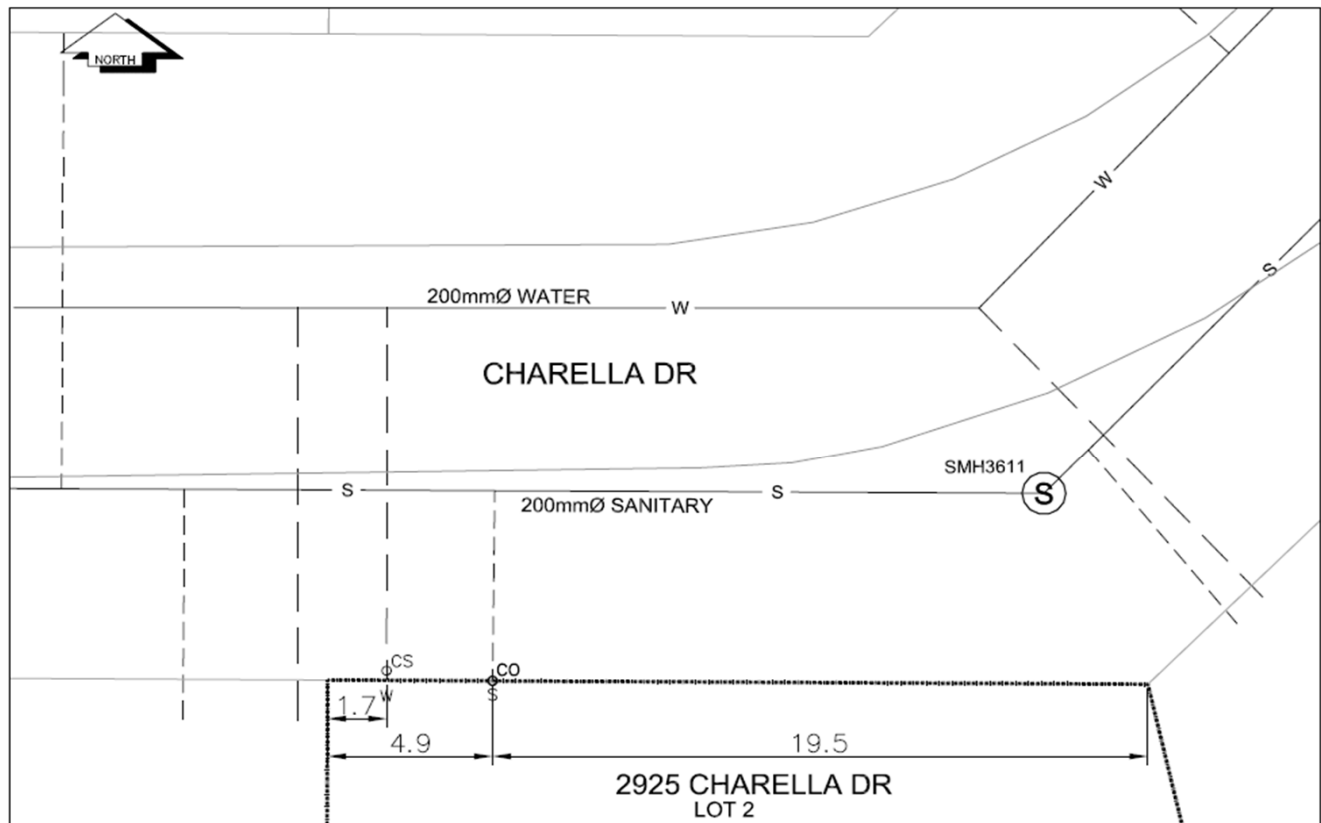
| Service Type | Diameter (mm) | Material | Invert Elev at main (m) | Depth of cut at property line (m) | Invert Elev at service end (m) | Distance into property (m) | Installation Date |
|--------------|---------------|----------|-------------------------|-----------------------------------|--------------------------------|----------------------------|-------------------|
| Sanitary | 100mm | PVC | - | 5.27 | - | - | January 1980 |
| Water | 20mm | Copper | - | - | - | - | |
| Storm | N/A | N/A | - | - | - | - | |

| Service Connection Location | | | | Sanitary (m) | Storm (m) |
|---------------------------------|------|-------------------------|------|--------------|-----------|
| Distance from downstream San MH | 3611 | towards upstream San MH | 3612 | 16.30 | |
| Distance from downstream Stm MH | - | towards upstream Stm MH | - | | |

| Power | Size | Communications | Size | Cable | Size | Gas | Size |
|------------------|------|------------------|------|------------------|------|----------|------|
| BC Hydro | - | Telus | - | Shaw | - | FortisBC | - |
| Overhead Service | | Overhead Service | | Overhead Service | | | |

| | | | |
|---------------|--|--------------|---|
| Installed by: | | Survey Date: | - |
| Comments: | Property subdivided in Jan 2014 - existing servicing unchanged | | |

NOT TO SCALE The information contained herein is for internal use only.
Not to be relied on unless confirmed by site inspection and/or investigation.



| | | |
|--------------|------------------------|---------------------|
| CS CURB STOP | --- W WATER SERVICE | --- S STORM SERVICE |
| CO CLEAN OUT | --- S SANITARY SERVICE | ⊗ WATER VALVE |

NOT TO SCALE