

City of Prince George

HISTORY SHEET

PID: **029-233-852**

Scale: 1:500

Legal: LOT 7

D.L.: 1433

PLAN: EPP34474

Address: **3923 ESTABROOK CRT**

Sanitary Connection:#	SIZE: 100mmØ	MATERIAL: PVC	INV. AT R 645.07m	CONNECTED
-----------------------	--------------	---------------	-------------------	-----------

Water Connection:#	SIZE: 19mmØ	MATERIAL: Copper	INV. AT R 645.08m	
--------------------	-------------	------------------	-------------------	--

Storm Connection:#	SIZE: 100mmØ	MATERIAL: PVC	INV. AT R 645.08m	CONNECTED
--------------------	--------------	---------------	-------------------	-----------

Cash Receipt No's:	WATER	SANITARY	STORM
--------------------	-------	----------	-------

CURB FROM PROPERTY LINE	5m	PAVEMENT WIDTH	10m
-------------------------	----	----------------	-----

HYDRO	75mm DB2	U/G CONNECTION	✓
-------	----------	----------------	---

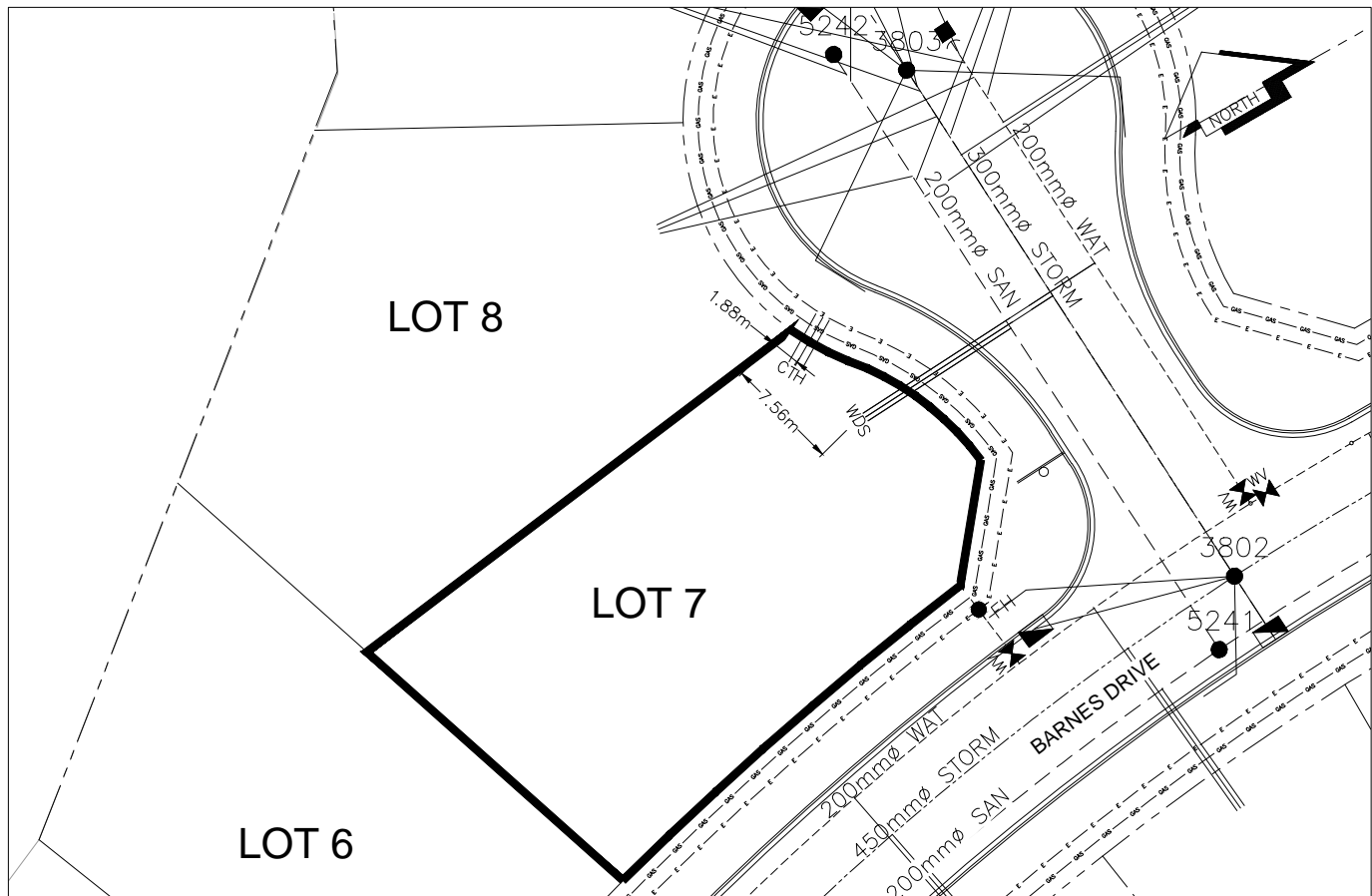
TELEPHONE	100mm DB2	U/G CONNECTION	✓
-----------	-----------	----------------	---

GAS	42 PROP/P.E.		
-----	--------------	--	--

Information Sheets: REF. DWGS. L&M ENGINEERING LTD. JOB. 1432-01-04 DWGS.

Comments: CS CURB STOP CO CLEAN OUT SDW WATER SERVICE STORM SERVICE SANITARY SERVICE HYDRO SERVICE CABLE SERVICE TELECOMMUNICATIONS GAS ELECTRICAL

THE INFORMATION CONTAINED HEREIN IS FOR INTERNAL USE ONLY.
NOT TO BE RELIED UPON UNLESS CONFIRMED BY THE SITE INSPECTION AND/OR INVESTIGATION



SANITARY, STORM & WATER SERVICE INVERTS	SANITARY	WATER	STORM
1. Distance from San. M.H. <u>5241</u> toward San. M.H. <u>5242</u> to lot service connection point is:	21.31m	N/A	N/A
1a.Distance from Stm. M.H. <u>3802</u> toward Stm. M.H. <u>3803</u> to lot service connection point is:	N/A	N/A	22.13m
2. Main Size at connection point is	200mmØ	200mmØ	300mmØ
3. Invert of service at main conn. stub point is	644.61m	644.96m	644.60m
4. Invert at service end is	645.12m	645.07m	645.16m
5. Cover at property line in meters	3.06m	3.13m	3.05m
6. Survey Date: JUNE 2013 Book Ref.: 1432-01-04 By: L&M ENGINEERING LTD			

SANITARY HISTORY:

DATE INSTALLED: JUNE 2013

INSTALLED BY: SUNLAND UTILITIES LTD

WATER HISTORY:

DATE INSTALLED: JUNE 2013

INSTALLED BY: SUNLAND UTILITIES LTD.

STORM HISTORY:

DATE INSTALLED: JUNE 2013

INSTALLED BY: SUNLAND UTILITIES LTD.