

City of Prince George

HISTORY SHEET

PID: **029-233-828**

Scale: 1:500

Legal: LOT 4

D.L.: 1433

PLAN: EPP34474

Address: **3925 BARNES DR**

Sanitary Connection:#	SIZE: 100mmØ	MATERIAL: PVC	INV. AT R 647.31m	CONNECTED
-----------------------	--------------	---------------	-------------------	-----------

Water Connection:#	SIZE: 19mmØ	MATERIAL: Copper	INV. AT R 647.29m	
--------------------	-------------	------------------	-------------------	--

Storm Connection:#	SIZE: 100mmØ	MATERIAL: PVC	INV. AT R 647.32m	CONNECTED
--------------------	--------------	---------------	-------------------	-----------

Cash Receipt No's:	WATER	SANITARY	STORM
--------------------	-------	----------	-------

CURB FROM PROPERTY LINE	5m	PAVEMENT WIDTH	10m
-------------------------	----	----------------	-----

HYDRO	75mm DB2	U/G CONNECTION	✓
-------	----------	----------------	---

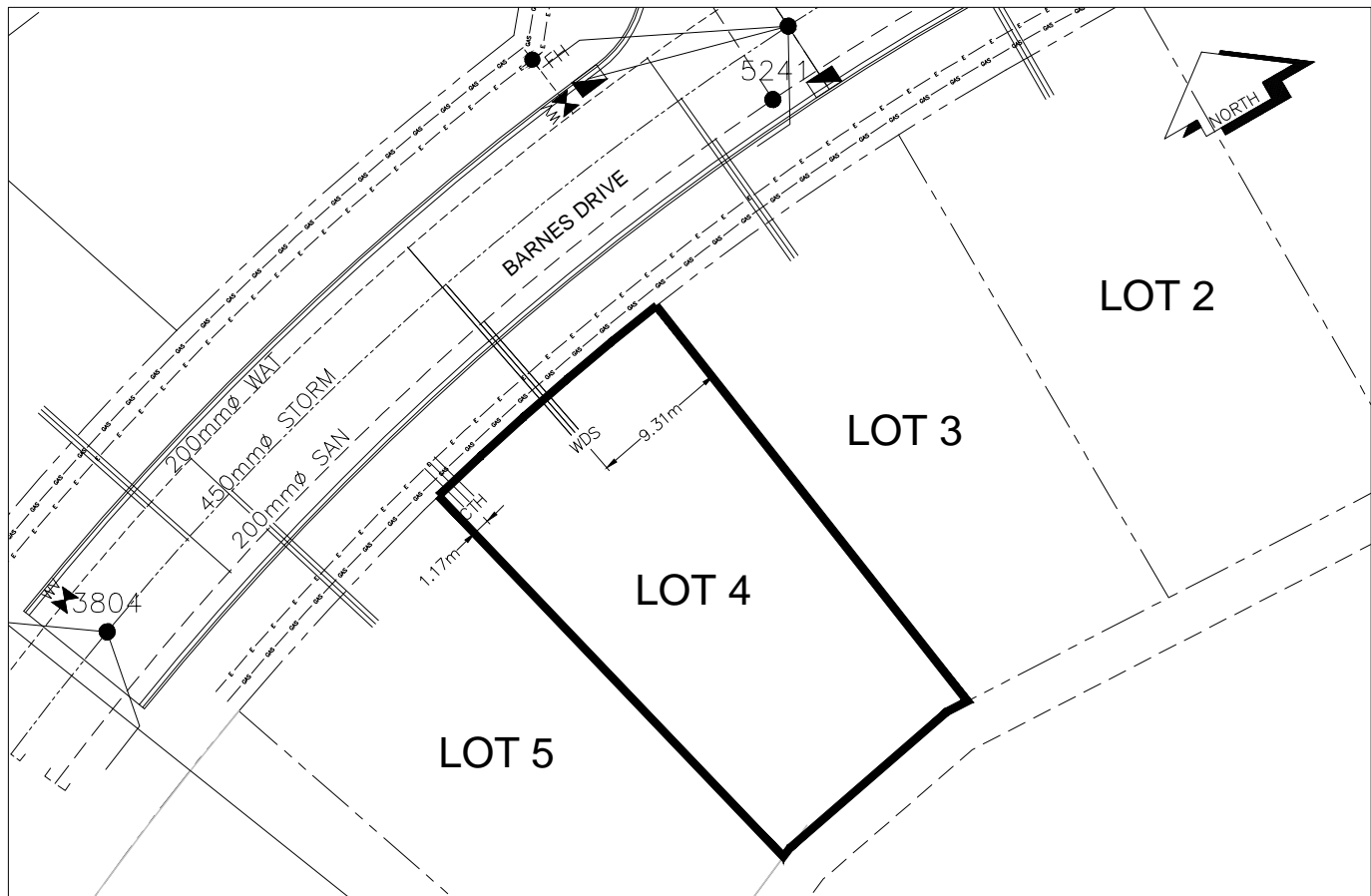
TELEPHONE	100mm DB2	U/G CONNECTION	✓
-----------	-----------	----------------	---

GAS	42 PROP/P.E.		
-----	--------------	--	--

Information Sheets: REF. DWGS. L&M ENGINEERING LTD. JOB. 1432-01-04 DWGS.

Comments:	CS CURB STOP CO CLEAN OUT	SDW WATER SERVICE STORM SERVICE SANITARY SERVICE	HYDRO SERVICE CABLE SERVICE TELECOMMUNICATIONS	GAS ELECTRICAL
-----------	------------------------------	---	--	-------------------

THE INFORMATION CONTAINED HEREIN IS FOR INTERNAL USE ONLY.
NOT TO BE RELIED UPON UNLESS CONFIRMED BY THE SITE INSPECTION AND/OR INVESTIGATION



SANITARY, STORM & WATER SERVICE INVERTS	SANITARY	WATER	STORM
1. Distance from San. M.H. <u>5241</u> toward San. M.H. <u>STUB</u> to lot service connection point is:	25.17m	N/A	N/A
1a.Distance from Stm. M.H. <u>3802</u> toward Stm. M.H. <u>3804</u> to lot service connection point is:	N/A	N/A	28.73m
2. Main Size at connection point is	200mmØ	200mmØ	450mmØ
3. Invert of service at main conn. stub point is	646.10m	646.78m	646.71m
4. Invert at service end is	647.44m	647.41m	647.43m
5. Cover at property line in meters	2.72m	2.82m	2.71m
6. Survey Date: JUNE 2013 Book Ref.: 1432-01-04 By: L&M ENGINEERING LTD			

SANITARY HISTORY:

DATE INSTALLED: JUNE 2013

INSTALLED BY: SUNLAND UTILITIES LTD

WATER HISTORY:

DATE INSTALLED: JUNE 2013

INSTALLED BY: SUNLAND UTILITIES LTD.

STORM HISTORY:

DATE INSTALLED: JUNE 2013

INSTALLED BY: SUNLAND UTILITIES LTD.