

# City of Prince George

## HISTORY SHEET

PID: 029178347

Scale: 1:500

Legal: LOT 10

D.L.: 1433

PLAN: EPP32539

Address: 3985 BARNES DR

Sanitary Connection:#	SIZE: 100mmØ	MATERIAL: PVC	INV. AT R 640.30m	CONNECTED
-----------------------	--------------	---------------	-------------------	-----------

Water Connection:#	SIZE: 19mmØ	MATERIAL: Copper	INV. AT R 640.26m	
--------------------	-------------	------------------	-------------------	--

Storm Connection:#	SIZE: 100mmØ	MATERIAL: PVC	INV. AT R 640.31m	CONNECTED
--------------------	--------------	---------------	-------------------	-----------

Cash Receipt No's:	WATER	SANITARY	STORM
--------------------	-------	----------	-------

CURB FROM PROPERTY LINE	5m	PAVEMENT WIDTH	10m
-------------------------	----	----------------	-----

HYDRO	75mm DB2	U/G CONNECTION	✓
-------	----------	----------------	---

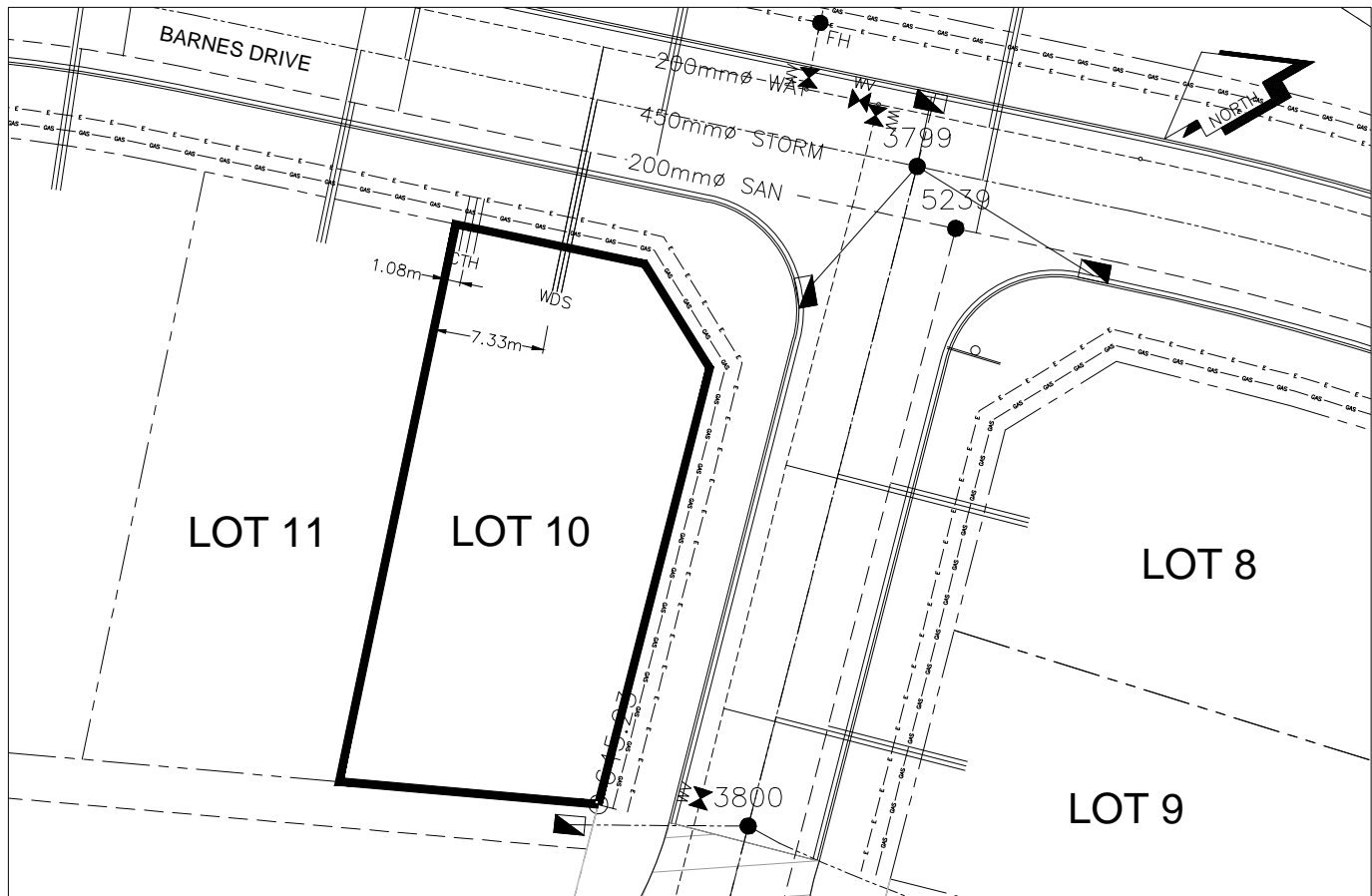
TELEPHONE	100mm DB2	U/G CONNECTION	✓
-----------	-----------	----------------	---

GAS	42 PROP/P.E.		
-----	--------------	--	--

Information Sheets: REF. DWGS. L&M ENGINEERING LTD. JOB. 1432-01-04 DWGS.

Comments: CS CURB STOP CO CLEAN OUT WOS WATER SERVICE SOS STORM SERVICE SSS SANITARY SERVICE H HYDRO SERVICE C CABLE SERVICE T TELECOMMUNICATIONS GAS ELECTRICAL

THE INFORMATION CONTAINED HEREIN IS FOR INTERNAL USE ONLY.  
NOT TO BE RELIED UPON UNLESS CONFIRMED BY THE SITE INSPECTION AND/OR INVESTIGATION



SANITARY, STORM & WATER SERVICE INVERTS	SANITARY	WATER	STORM
1. Distance from San. M.H. <u>5239</u> toward San. M.H. <u>5240</u> to lot service connection point is:	24.05m	N/A	N/A
1a.Distance from Stm. M.H. <u>3799</u> toward Stm. M.H. <u>3801</u> to lot service connection point is:	N/A	N/A	20.60m
2. Main Size at connection point is	200mmØ	200mmØ	450mmØ
3. Invert of service at main conn. stub point is	639.53m	638.77m	639.58m
4. Invert at service end is	640.36m	640.32m	640.37m
5. Cover at property line in meters	2.78m	2.90m	2.77m
6. Survey Date: JUNE 2013 Book Ref.: 1432-01-04 By: L&M ENGINEERING LTD			

SANITARY HISTORY:

DATE INSTALLED: JUNE 2013

INSTALLED BY: SUNLAND UTILITIES LTD

WATER HISTORY:

DATE INSTALLED: JUNE 2013

INSTALLED BY: SUNLAND UTILITIES LTD.

STORM HISTORY:

DATE INSTALLED: JUNE 2013

INSTALLED BY: SUNLAND UTILITIES LTD.