

2012-05-28

City of Prince George HISTORY SHEET

PID: ~~028848071~~ **029125791** Scale: 1:500
 Legal: LOT ~~29~~ **B** D.L.: 2014 PLAN: ~~EPP16518~~ **EPP28435**

Address: 8038 Stillwater Cres

Sanitary Connection:# SIZE: 100mmØ MATERIAL: PVC INV. 584.51 CONNECTED

Water Connection:# SIZE: 19mmØ MATERIAL: copper INV. 584.28 METER

Storm Connection:# SIZE: 100mmØ MATERIAL: PVC INV. 584.61 CONNECTED

Cash Receipt No's: WATER SANITARY STORM

CURB FROM PROPERTY LINE 5m PAVEMENT WIDTH 8.5m

B.C. HYDRO 75mm DB2 U/G CONNECTION ✓

B.C. TELEPHONE 50mm DB2 U/G CONNECTION ✓

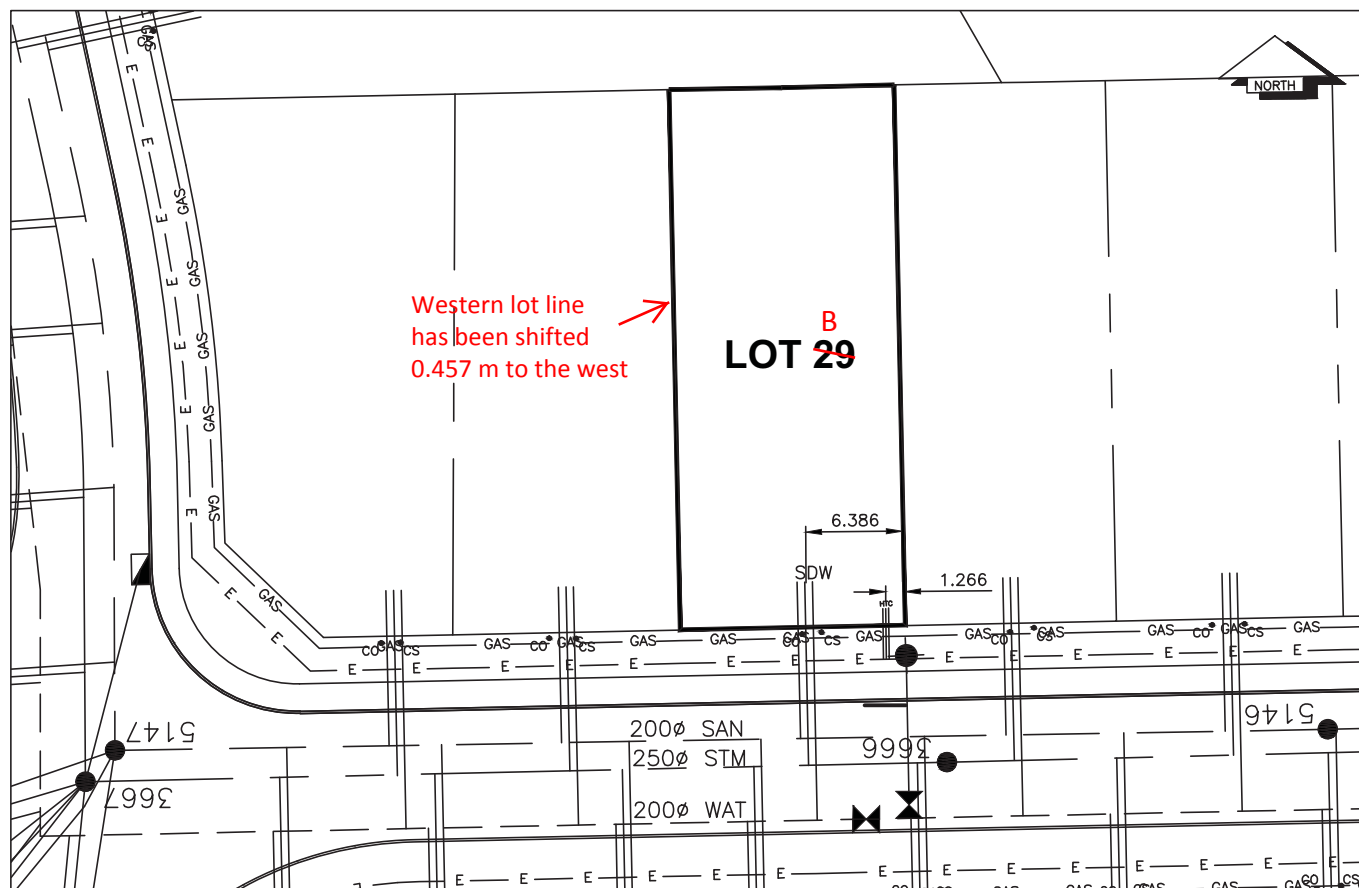
TERASEN 42 PROP/P.E.

Information Sheets: REFERENCE DRAWINGS L&M ENGINEERING LIMITED JOB NO. 1140-07-04

Comments: CS CURB STOP SDW WATER SERVICE HYDRO SERVICE GAS GAS
 CO CLEAN OUT CABLE SERVICE TELECOMMUNICATIONS E ELECTRICAL

THE INFORMATION CONTAINED HEREIN IS FOR INTERNAL USE ONLY.

NOT TO BE RELIED UPON UNLESS CONFIRMED BY THE SITE INSPECTION AND/OR INVESTIGATION



SANITARY, STORM & WATER SERVICE INVERTS	SANITARY	WATER	STORM
1. Distance from San. M.H. <u>5146</u> toward San. M.H. <u>5147</u> to lot service connection point is:	34m	N/A	N/A
1a.Distance from Stm. M.H. <u>3666</u> toward Stm. M.H. <u>3667</u> to lot service connection point is:	N/A	N/A	10m
2. Main Size at connection point is	200mm	200mm	250mm
3. Invert of main at conn. stub point is	582.34	583.58	582.41
4. Invert at service end is	584.51	584.28	584.61
5. Cut at property line in meters	2.82m	3.05m	2.72m
6. Survey Date: OCT 2009 Book Ref.: 1140-07-04 By: FORESIGHT SURVEY & DESIGN			

SANITARY HISTORY:

Installed By: Fortwood Homes Ltd.

WATER HISTORY:

Installed By: Fortwood Homes Ltd.

STORM HISTORY:

Installed By: Fortwood Homes Ltd.