

# City of Prince George

## HISTORY SHEET

PID: ~~028330951~~ 028-969-171

Scale: 1:500

EPP22082

Legal: LOT ~~14~~ A

D.L.: 2014

PLAN: ~~EPP5390~~

Address: - 7616 & ~~7620~~ Stillwater Crescent

Sanitary Connection:#	SIZE: 100mm	100mmØ	MATERIAL: PVC	PVC	INV. 583.58	CONNECTED
Water Connection:#	SIZE: 19mm	19mmØ	MATERIAL: copper	copper	INV. 583.58	METER
Storm Connection:#	SIZE: 100mm	100mmØ	MATERIAL: PVC	PVC	INV. 583.99	CONNECTED

Cash Receipt No's:	WATER	SANITARY	STORM
--------------------	-------	----------	-------

CURB FROM PROPERTY LINE	5m	PAVEMENT WIDTH	10m
-------------------------	----	----------------	-----

B.C. HYDRO	75mm DB2	U/G CONNECTION	✓
------------	----------	----------------	---

B.C. TELEPHONE	50mm DB2	U/G CONNECTION	✓
----------------	----------	----------------	---

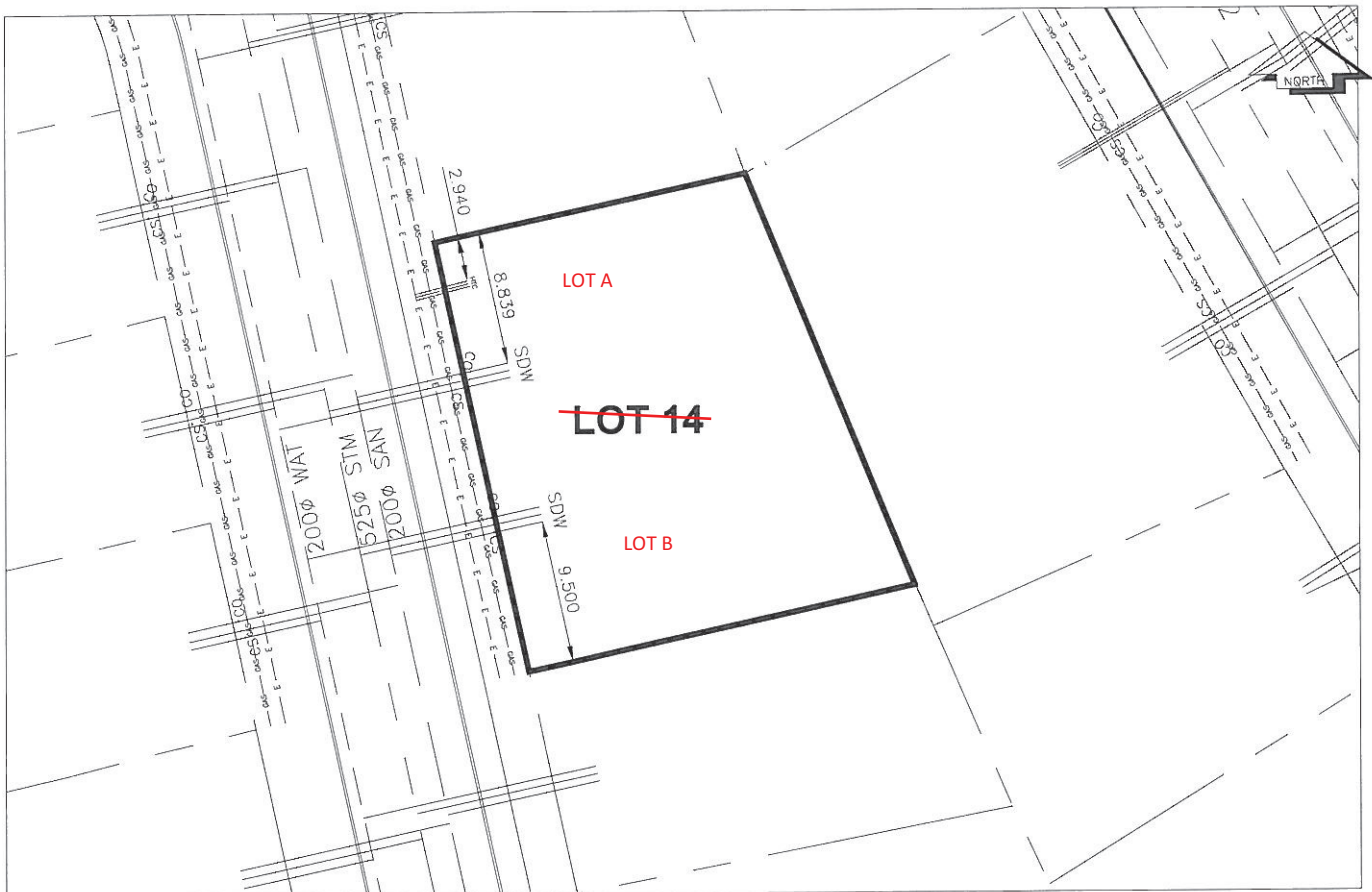
TERASEN	42 PROP/P.E.
---------	--------------

Information Sheets: REFERENCE DRAWINGS L&M ENGINEERING LIMITED JOB NO. 1140-07-04

Comments: CS CURB STOP SDW WATER SERVICE TCH HYDRO SERVICE CAS GAS  
CO CLEAN OUT SDW STORM SERVICE TCH CABLE SERVICE E ELECTRICAL  
SDW SANITARY SERVICE TCH TELECOMMUNICATIONS

THE INFORMATION CONTAINED HEREIN IS FOR INTERNAL USE ONLY.

NOT TO BE RELIED UPON UNLESS CONFIRMED BY THE SITE INSPECTION AND/OR INVESTIGATION



SANITARY, STORM & WATER SERVICE INVERTS NORTH	SANITARY	WATER	STORM
1. Distance from San. M.H. <u>18</u> toward San. M.H. <u>17</u> to lot service connection point is:	45m	N/A	N/A
1a. Distance from Stm. M.H. <u>22</u> toward Stm. M.H. <u>11</u> to lot service connection point is:	N/A	N/A	47m
2. Main Size at connection point is	200mmØ	200mmØ	250mmØ
3. Invert of main at conn. stub point is	582.98	582.89	583.42
4. Invert at service end is	583.58	583.58	583.99
5. Cut at property line in meters	2.66m	2.74m	2.25m
6. Survey Date: OCT 2009 Book Ref.: 1140-07-04 By: FORESIGHT SURVEY & DESIGN			
SANITARY, STORM & WATER SERVICE INVERTS SOUTH	SANITARY	WATER	STORM
1. Distance from San. M.H. <u>18</u> toward San. M.H. <u>17</u> to lot service connection point is:	55m	N/A	N/A
1a. Distance from Stm. M.H. <u>22</u> toward Stm. M.H. <u>21</u> to lot service connection point is:	N/A	N/A	56m
2. Main Size at connection point is	200mmØ	200mmØ	250mmØ
3. Invert of main at conn. stub point is	582.90	582.95	583.48
4. Invert at service end is	583.54	583.74	584.00
5. Cut at property line in meters	2.65m	2.74m	2.19m
6. Survey Date: OCT 2009 Book Ref.: 1140-07-04 By: FORESIGHT SURVEY & DESIGN			

#### SANITARY HISTORY:

Installed By: Fortwood Homes Ltd.

#### WATER HISTORY:

Installed By: Fortwood Homes Ltd.

#### STORM HISTORY:

Installed By: Fortwood Homes Ltd.