

City of Prince George

HISTORY SHEET

PID: **028904877**

Scale: 1:500

Legal: LOT 31

D.L.: 905

PLAN: EPP17616

Address: **2672 CHANCELLOR BOULEVARD**

Sanitary Connection:#	SIZE: 100mmØ	MATERIAL: PVC	INV. AT R 715.57m	CONNECTED
-----------------------	--------------	---------------	-------------------	-----------

Water Connection:#	SIZE: 19mmØ	MATERIAL: Copper	INV. AT R 715.55m	
--------------------	-------------	------------------	-------------------	--

Storm Connection:#	SIZE: 100mmØ	MATERIAL: PVC	INV. AT R 715.56m	CONNECTED
--------------------	--------------	---------------	-------------------	-----------

Cash Receipt No's:	WATER	SANITARY	STORM
--------------------	-------	----------	-------

CURB FROM PROPERTY LINE	6m	PAVEMENT WIDTH	13m
-------------------------	----	----------------	-----

HYDRO	75mm DB2	U/G CONNECTION	✓
-------	----------	----------------	---

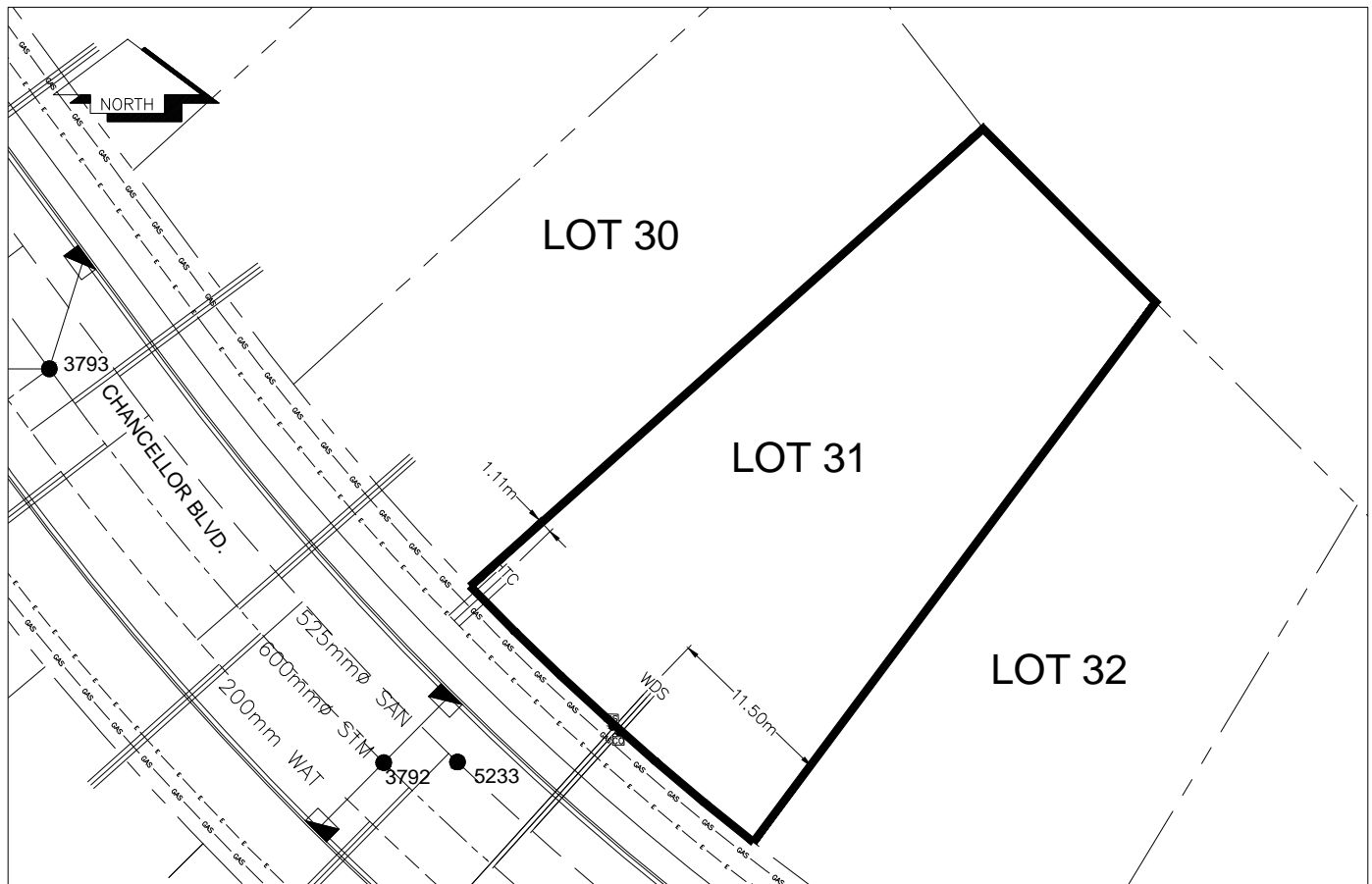
TELEPHONE	100mm DB2	U/G CONNECTION	✓
-----------	-----------	----------------	---

GAS	42 PROP/P.E.		
-----	--------------	--	--

Information Sheets: REF. DWGS. L&M ENGINEERING LTD. JOB. 1273-14-04 DWGS.

Comments:	CS CURB STOP CO CLEAN OUT	SDW WATER SERVICE STORM SERVICE SANITARY SERVICE	HYDRO SERVICE CABLE SERVICE TELECOMMUNICATIONS	GAS ELECTRICAL
-----------	------------------------------	---	--	-------------------

THE INFORMATION CONTAINED HEREIN IS FOR INTERNAL USE ONLY.
NOT TO BE RELIED UPON UNLESS CONFIRMED BY THE SITE INSPECTION AND/OR INVESTIGATION



SANITARY, STORM & WATER SERVICE INVERTS	SANITARY	WATER	STORM
1. Distance from San. M.H. <u>5233</u> toward San. M.H. <u>5232</u> to lot service connection point is:	7.47m	N/A	N/A
1a.Distance from Stm. M.H. <u>3792</u> toward Stm. M.H. <u>3791</u> to lot service connection point is:	N/A	N/A	10.96m
2. Main Size at connection point is	525mmØ	200mmØ	600mmØ
3. Invert of service at main conn. stub point is	715.13m	714.21m	714.75m
4. Invert at service end is	715.63m	715.61m	715.62m
5. Cover at property line in meters	2.41m	2.51m	2.42m
6. Survey Date: MAY 2012 Book Ref.:1273-14-04 By: L&M ENGINEERING LTD			

SANITARY HISTORY:

DATE INSTALLED: JULY 2012

INSTALLED BY: SUNLAND UTILITIES LTD

WATER HISTORY:

DATE INSTALLED: JULY 2012

INSTALLED BY: SUNLAND UTILITIES LTD.

STORM HISTORY:

DATE INSTALLED: JULY 2012

INSTALLED BY: SUNLAND UTILITIES LTD.