

City of Prince George

HISTORY SHEET

PID: 028904605

Scale: 1:500

Legal: LOT 40

D.L.: 2003

PLAN: EPP17616

Address: 3178 MAURICE DRIVE

Sanitary Connection:#	SIZE: 100mmØ	MATERIAL: PVC	INV. AT \mathbb{R} 713.68m	CONNECTED
-----------------------	--------------	---------------	------------------------------	-----------

Water Connection:#	SIZE: 19mmØ	MATERIAL: Copper	INV. AT \mathbb{R} 713.68m	
--------------------	-------------	------------------	------------------------------	--

Storm Connection:#	SIZE: 100mmØ	MATERIAL: PVC	INV. AT \mathbb{R} 713.68m	CONNECTED
--------------------	--------------	---------------	------------------------------	-----------

Cash Receipt No's:	WATER	SANITARY	STORM
--------------------	-------	----------	-------

CURB FROM PROPERTY LINE	5m	PAVEMENT WIDTH	10m
-------------------------	----	----------------	-----

HYDRO	75mm DB2	U/G CONNECTION	✓
-------	----------	----------------	---

TELEPHONE	100mm DB2	U/G CONNECTION	✓
-----------	-----------	----------------	---

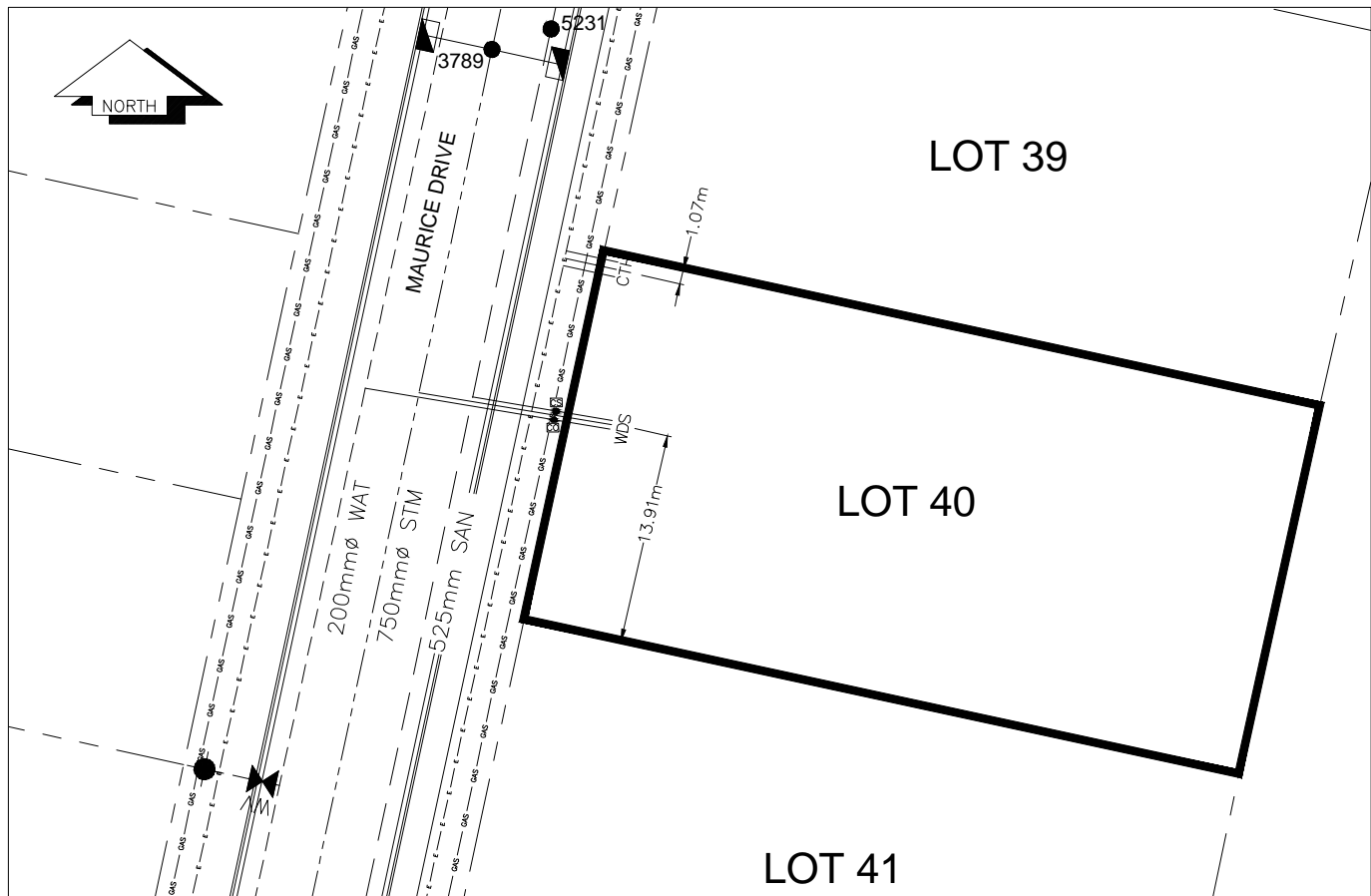
GAS	42 PROP/P.E.		
-----	--------------	--	--

Information Sheets: REF. DWGS. L&M ENGINEERING LTD. JOB. 1273-14-04 DWGS.

Comments:	CS CURB STOP	SDW WATER SERVICE	TOH HYDRO SERVICE	— GAS
	CO CLEAN OUT	SDW STORM SERVICE	TOH CABLE SERVICE	— E ELECTRICAL
		SDW SANITARY SERVICE	TOH TELECOMMUNICATIONS	

THE INFORMATION CONTAINED HEREIN IS FOR INTERNAL USE ONLY.

NOT TO BE RELIED UPON UNLESS CONFIRMED BY THE SITE INSPECTION AND/OR INVESTIGATION



SANITARY, STORM & WATER SERVICE INVERTS	SANITARY	WATER	STORM
1. Distance from San. M.H. <u>5231</u> toward San. M.H. <u>5230</u> to lot service connection point is:	25.29m	N/A	N/A
1a.Distance from Stm. M.H. <u>3789</u> toward Stm. M.H. <u>3788</u> to lot service connection point is:	N/A	N/A	23.22m
2. Main Size at connection point is	525mmØ	200mmØ	750mmØ
3. Invert of service at main conn. stub point is	710.70m	712.75m	710.50m
4. Invert at service end is	714.00m	714.04m	714.02m
5. Cover at property line in meters	2.37m	2.45m	2.37m
6. Survey Date: MAY 2012 Book Ref.:1273-14-04 By: L&M ENGINEERING LTD			

SANITARY HISTORY:

DATE INSTALLED: JULY 2012

INSTALLED BY: SUNLAND UTILITIES LTD

WATER HISTORY:

DATE INSTALLED: JULY 2012

INSTALLED BY: SUNLAND UTILITIES LTD.

STORM HISTORY:

DATE INSTALLED: JULY 2012

INSTALLED BY: SUNLAND UTILITIES LTD.