

City of Prince George

HISTORY SHEET

PID: 028904583

Scale: 1:500

Legal: LOT 38

D.L.: 2003

PLAN: EPP17616

Address: 3254 MAURIVE DRIVE

Sanitary Connection:# SIZE: 100mmØ MATERIAL: PVC INV. AT RL 712.79m CONNECTED

Water Connection:# SIZE: 19mmØ MATERIAL: Copper INV. AT RL 712.79m

Storm Connection:# SIZE: 100mmØ MATERIAL: PVC INV. AT RL 712.79m CONNECTED

Cash Receipt No's: WATER SANITARY STORM

CURB FROM PROPERTY LINE 5m PAVEMENT WIDTH 10m

HYDRO 75mm DB2 U/G CONNECTION ✓

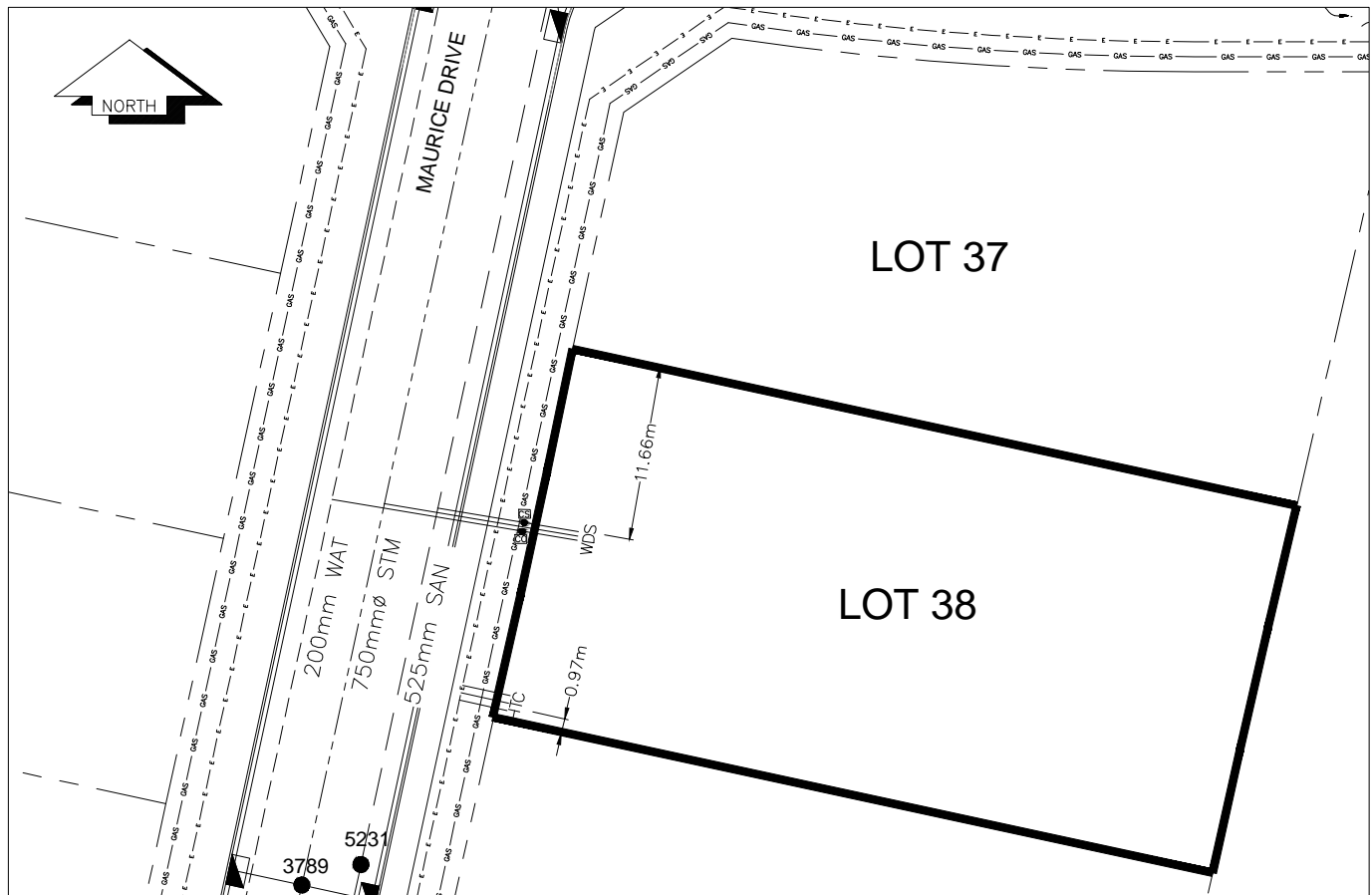
TELEPHONE 100mm DB2 U/G CONNECTION ✓

GAS 42 PROP/P.E.

Information Sheets: REF. DWGS. L&M ENGINEERING LTD. JOB. 1273-14-04 DWGS.

Comments: CS CURB STOP SDW WATER SERVICE SDW HYDRO SERVICE
CO CLEAN OUT SDW STORM SERVICE SDW CABLE SERVICE
SDW SANITARY SERVICE SDW TELECOMMUNICATIONS E GAS
E ELECTRICAL

THE INFORMATION CONTAINED HEREIN IS FOR INTERNAL USE ONLY.
NOT TO BE RELIED UPON UNLESS CONFIRMED BY THE SITE INSPECTION AND/OR INVESTIGATION



| SANITARY, STORM & WATER SERVICE INVERTS | SANITARY | WATER | STORM |
|---------------------------------------------------------------------------------------------------------|----------|---------|---------|
| 1. Distance from San. M.H. <u>5232</u> toward San. M.H. <u>5231</u> to lot service connection point is: | 50.38m | N/A | N/A |
| 1a.Distance from Stm. M.H. <u>3790</u> toward Stm. M.H. <u>3789</u> to lot service connection point is: | N/A | N/A | 40.07m |
| 2. Main Size at connection point is | 525mmØ | 200mmØ | 750mmØ |
| 3. Invert of service at main conn. stub point is | 711.04m | 711.53m | 710.90m |
| 4. Invert at service end is | 713.28m | 713.32m | 713.25m |
| 5. Cover at property line in meters | 2.17m | 2.25m | 2.17m |
| 6. Survey Date: MAY 2012 Book Ref.:1273-14-04 By: L&M ENGINEERING LTD | | | |
| | | | |
| | | | |
| | | | |
| | | | |
| | | | |
| | | | |
| | | | |
| | | | |

SANITARY HISTORY:

DATE INSTALLED: JULY 2012

INSTALLED BY: SUNLAND UTILITIES LTD

WATER HISTORY:

DATE INSTALLED: JULY 2012

INSTALLED BY: SUNLAND UTILITIES LTD.

STORM HISTORY:

DATE INSTALLED: JULY 2012

INSTALLED BY: SUNLAND UTILITIES LTD.