

2012-05-28

# City of Prince George

## HISTORY SHEET

PID: 028847784

Scale: 1:500

Legal: LOT 3

D.L.: 2014

PLAN: EPP16518

Address: 7657 Stillwater Cres

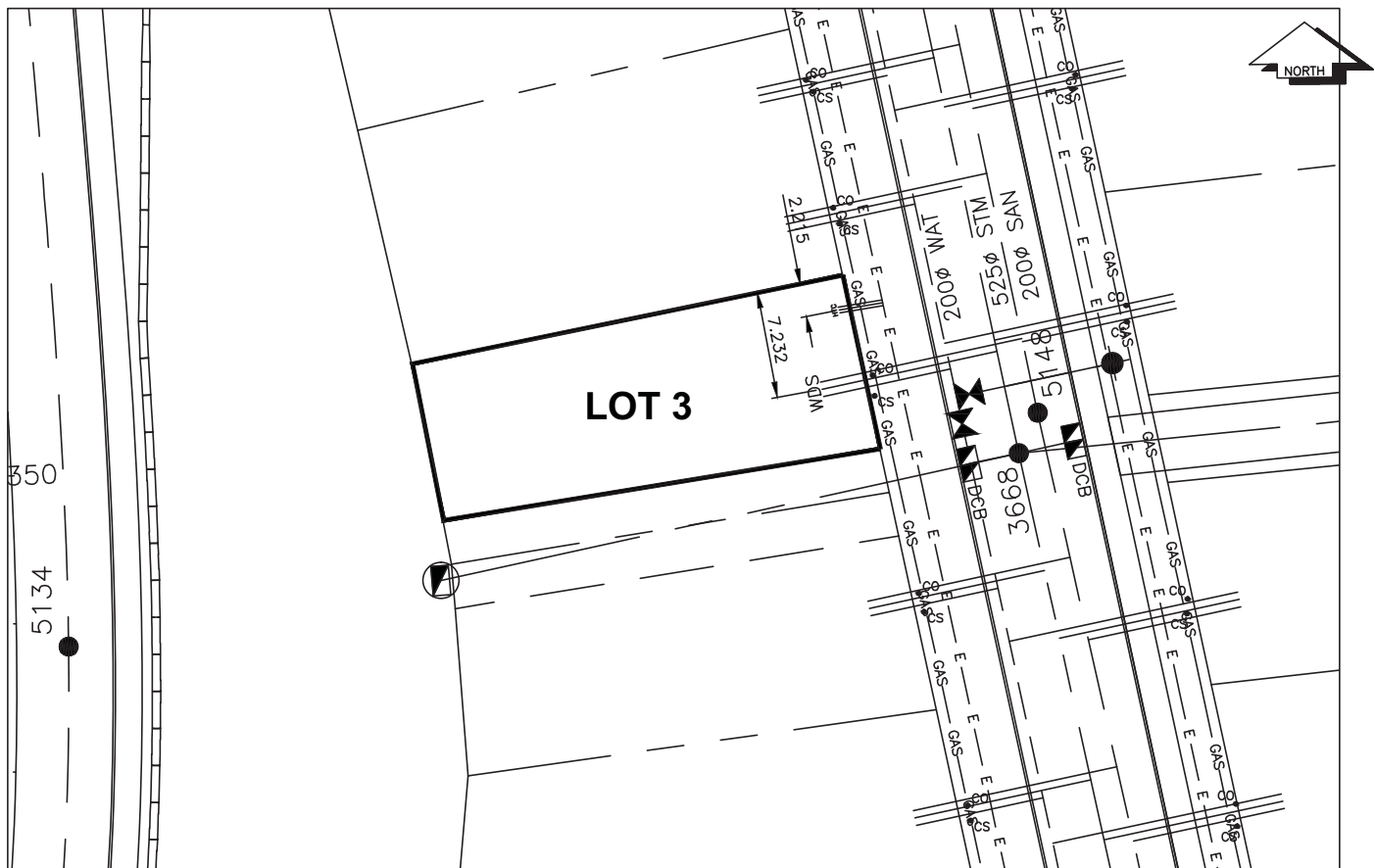
|                         |              |                  |                |           |
|-------------------------|--------------|------------------|----------------|-----------|
| Sanitary Connection:#   | SIZE: 100mmØ | MATERIAL: PVC    | INV. 583.74    | CONNECTED |
| Water Connection:#      | SIZE: 19mmØ  | MATERIAL: copper | INV. 583.40    | METER     |
| Storm Connection:#      | SIZE 100mmØ  | MATERIAL PVC     | INV. 583.77    | CONNECTED |
| Cash Receipt No's:      | WATER        | SANITARY         | STORM          |           |
| CURB FROM PROPERTY LINE | 5m           |                  | PAVEMENT WIDTH | 8.5m      |
| B.C. HYDRO              | 75mm DB2     | U/G CONNECTION   | ✓              |           |
| B.C. TELEPHONE          | 50mm DB2     | U/G CONNECTION   | ✓              |           |
| TERASEN                 | 42 PROP/P.E. |                  |                |           |

Information Sheets: REFERENCE DRAWINGS L&amp;M ENGINEERING LIMITED JOB NO. 1140-07-04

Comments: CS<sub>O</sub> CURB STOP SDW WATER SERVICE HCH HYDRO SERVICE GAS GAS  
CO CLEAN OUT STORM SERVICE CABLE SERVICE TELECOMMUNICATIONS E ELECTRICAL  
SANITARY SERVICE

THE INFORMATION CONTAINED HEREIN IS FOR INTERNAL USE ONLY.

NOT TO BE RELIED UPON UNLESS CONFIRMED BY THE SITE INSPECTION AND/OR INVESTIGATION



| SANITARY, STORM & WATER SERVICE INVERTS   | SANITARY | WATER  | STORM  |
|---|----------|--------|--------|
| 1. Distance from San. M.H. <u>5149</u> toward San. M.H. <u>5148</u> to lot service connection point is: | 104m     | N/A    | N/A    |
| 1a.Distance from Stm. M.H. <u>3669</u> toward Stm. M.H. <u>3668</u> to lot service connection point is: | N/A      | N/A    | 105m   |
| 2. Main Size at connection point is   | 200mm    | 200mm  | 525mm  |
| 3. Invert of main at conn. stub point is  | 582.34   | 583.58 | 582.41 |
| 4. Invert at service end is   | 583.74   | 583.40 | 583.77 |
| 5. Cut at property line in meters   | 2.41m    | 2.75m  | 2.38m  |
| 6. Survey Date: OCT 2009    Book Ref.: 1140-07-04    By: FORESIGHT SURVEY & DESIGN                      |          |        |        |
|   |          |        |        |
|   |          |        |        |
|   |          |        |        |
|   |          |        |        |
|   |          |        |        |
|   |          |        |        |
|   |          |        |        |
|   |          |        |        |
|   |          |        |        |

**SANITARY HISTORY:**

Installed By: Fortwood Homes Ltd.

**WATER HISTORY:**

Installed By: Fortwood Homes Ltd.

**STORM HISTORY:**

Installed By: Fortwood Homes Ltd.