

# City of Prince George

## HISTORY SHEET

PID: 028735269

Scale: 1:1250

Legal: LOT 2

D.L.: 2432

PLAN: EPP15809

Address: 9288 HOLDNER ROAD

Sanitary Connection:#	SIZE: 100mmØ	MATERIAL: PVC	INV. 736.90	CONNECTED
-----------------------	--------------	---------------	-------------	-----------

Water Connection:#	SIZE: 19mmØ	MATERIAL: copper	INV. 738.01	METER
--------------------	-------------	------------------	-------------	-------

Storm Connection:#	SIZE N/A	MATERIAL N/A	INV. N/A	N/A
--------------------	----------	--------------	----------	-----

Cash Receipt No's:	WATER	SANITARY	STORM
--------------------	-------	----------	-------

CURB FROM PROPERTY LINE	N/A	PAVEMENT WIDTH	8m
-------------------------	-----	----------------	----

B.C. HYDRO	Overhead
------------	----------

B.C. TELEPHONE	Overhead
----------------	----------

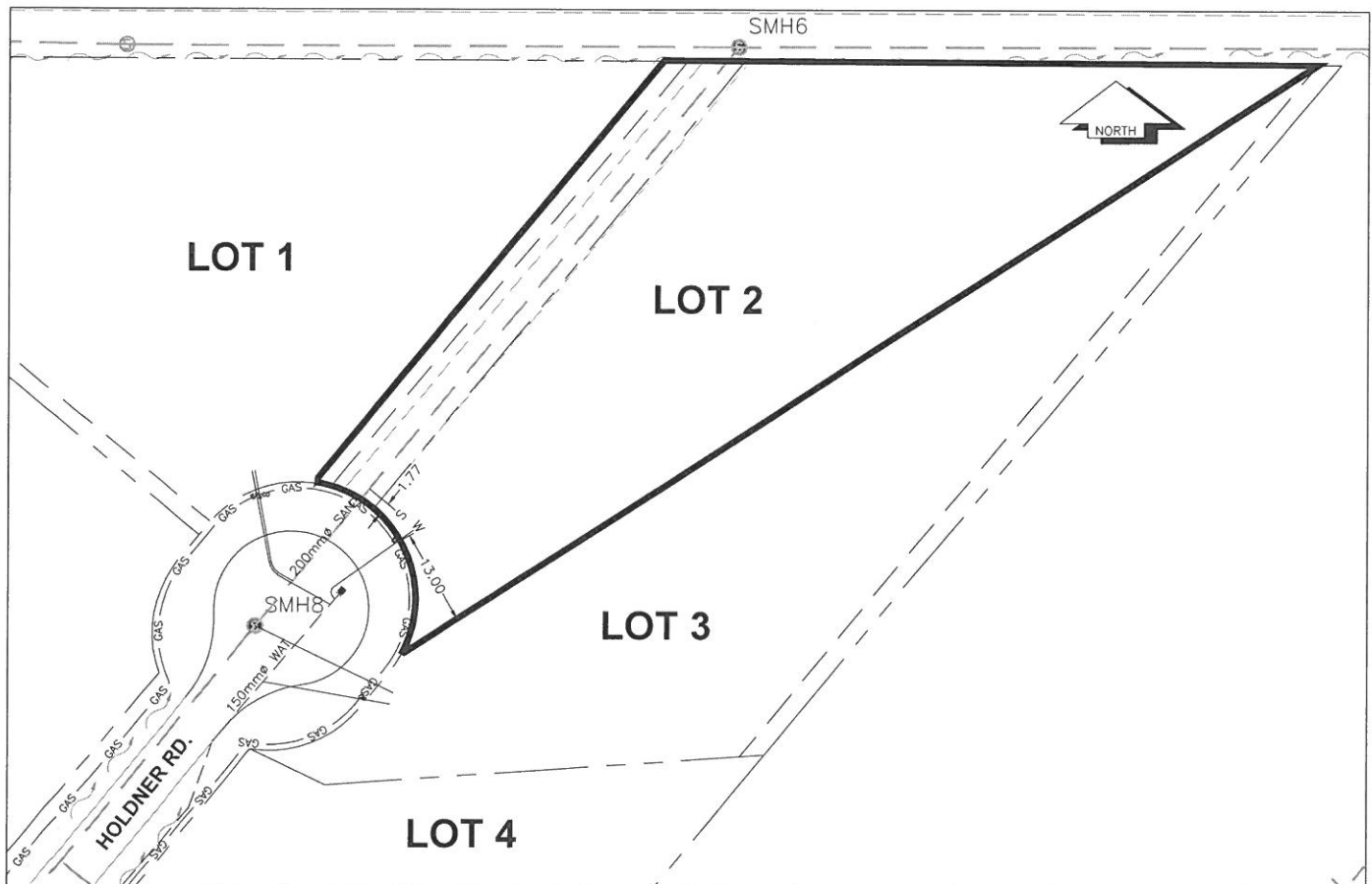
TERASEN	42 PROP/P.E.
---------	--------------

Information Sheets: REFERENCE DRAWINGS L&M ENGINEERING LIMITED JOB NO. 1256-07-04

Comments:	CS CURB STOP CO CLEAN OUT	SDW WATER SERVICE SDS STORM SERVICE SSS SANITARY SERVICE	TOH HYDRO SERVICE TOC CABLE SERVICE TOE TELECOMMUNICATIONS	GAS GAS ELECTRICAL
-----------	------------------------------	--	--	-----------------------

THE INFORMATION CONTAINED HEREIN IS FOR INTERNAL USE ONLY.

NOT TO BE RELIED UPON UNLESS CONFIRMED BY THE SITE INSPECTION AND/OR INVESTIGATION



SANITARY, STORM & WATER SERVICE INVERTS	SANITARY	WATER	STORM
1. Distance from San. M.H. <u>8</u> toward San. M.H. <u>6</u> to lot service connection point is:	30m	N/A	N/A
1a. Distance from Stm. M.H. _____ toward Stm. M.H. _____ to lot service connection point is:	N/A	N/A	N/A
2. Main Size at connection point is	200mm	150mm	N/A
3. Invert of main at conn. stub point is	736.70	737.97	N/A
4. Invert at service end is	736.90	738.01	N/A
5. Cut at property line in meters	3.09	2.39	N/A
6. Survey Date: AUG. 2012 Book Ref.: 1256-07-04 By: L&M ENGINEERING LTD.			

### SANITARY HISTORY:

Installed By: Fair Value Homes Ltd.

### WATER HISTORY:

Installed By: Fair Value Homes Ltd.

### STORM HISTORY:

N/A