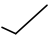
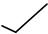
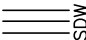
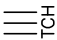
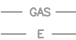



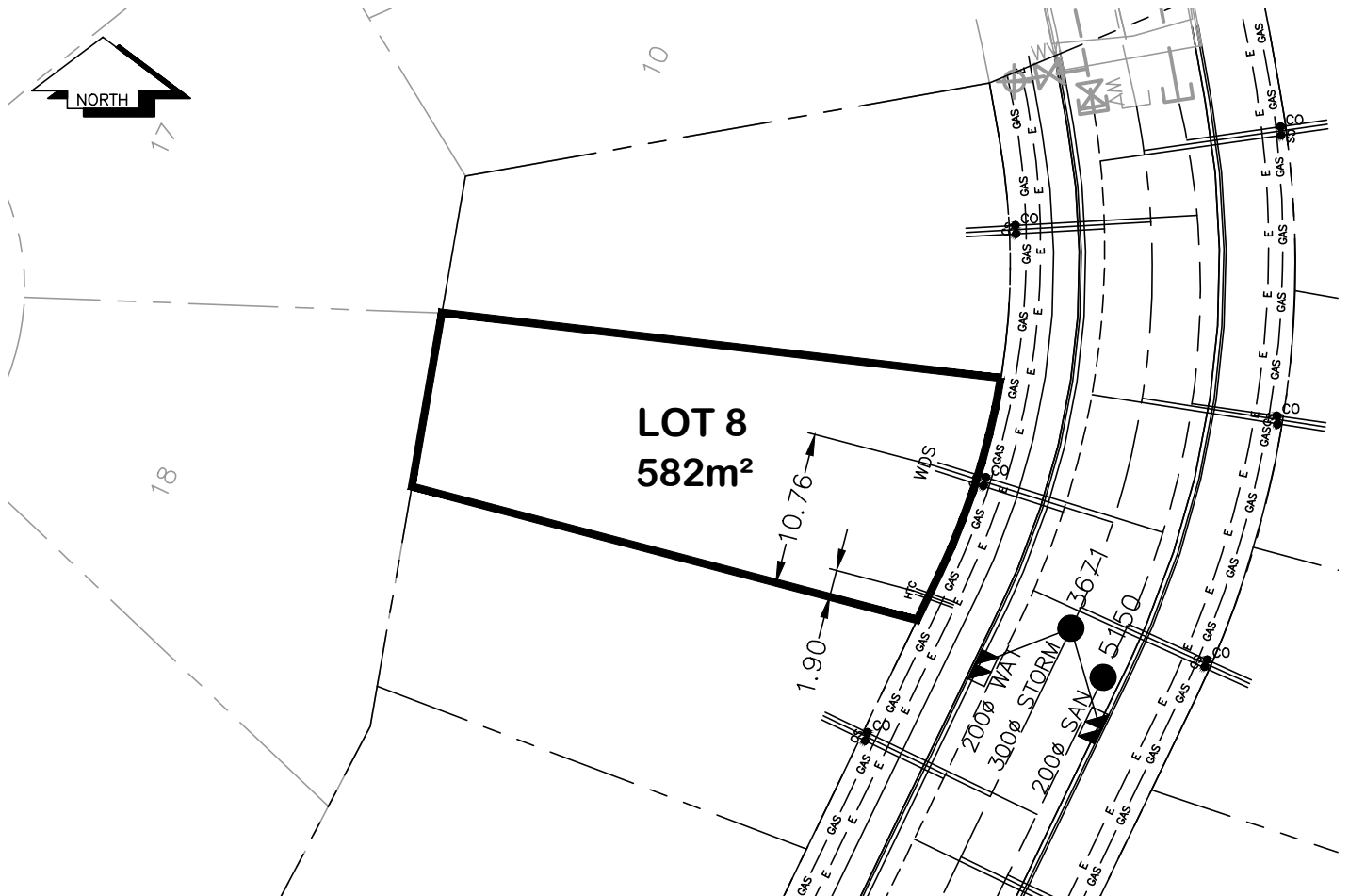
City of Prince George

HISTORY SHEET

PID: -		028396529		Scale: 1:500				
Legal:		LOT 8		D.L.: - 1605		PLAN: - EPP8499		
Address:		-		2995 VISTA RIDGE DR				
Sanitary Connection:#		SIZE:	100mmØ	MATERIAL	PVC	INV.	663.06m	CONNECTED
Water Connection:#		SIZE:	19mmØ	MATERIAL:	COPPER	INV.	663.00m	
Storm Connection:#		SIZE	100mmØ	MATERIAL	PVC	INV.	663.02m	CONNECTED
Cash Receipt No's:		WATER		SANITARY		STORM		
CURB FROM PROPERTY LINE		5m				PAVEMENT WIDTH		10m
B.C. HYDRO		75mm DB2		U/G CONNECTION				
B.C. TELEPHONE		50mm DB2		U/G CONNECTION				
TERASEN GAS		42 PROP /P.E						
Information Sheets:		REF. DWGS. L&M ENGINEERING LTD. JOB. 1106-06-04 DWGS. (001-306)						
Comments:		CS CURB STOP CO CLEAN OUT	 SDW	WATER SERVICE STORM SERVICE SANITARY SERVICE		 TOH	HYDRO SERVICE CABLE SERVICE TELECOMMUNICATIONS	 GAS  E ELECTRICAL

THE INFORMATION CONTAINED HEREIN IS FOR INTERNAL USE ONLY.

NOT TO BE RELIED UPON UNLESS CONFIRMED BY THE SITE INSPECTION AND/OR INVESTIGATION



SANITARY, STORM & WATER SERVICE INVERTS	SANITARY	WATER	STORM
1. Distance from San. M.H. 5150 toward San. M.H. 4459 to lot service connection point is:	11.0m	N/A	N/A
1a. Distance from Stm. M.H. 3671 toward Stm. M.H. 622 to lot service connection point is:	N/A	N/A	8.0m
2. Main Size at connection point is	200mmØ	200mmØ	300mmØ
3. Invert of main at conn. stub pt is	662.39m	661.66m	662.33m
4. Invert at service end is	663.06m	663.00m	663.02m
5. Cover at P/L in meters	2.31m	2.74m	2.35m
6. Survey Date: NOV, 14, 07 Book Ref.: 1106-06-03 By: FORESIGHT			

SANITARY HISTORY:

DATE INSTALLED: JULY 2010

INSTALLED BY: WESTERN INDUSTRIAL CONTRACTORS LTD

WATER HISTORY:

DATE INSTALLED: JULY 2010

INSTALLED BY: WESTERN INDUSTRIAL CONTRACTORS LTD

STORM HISTORY:

DATE INSTALLED: JULY 2010

INSTALLED BY: WESTERN INDUSTRIAL CONTRACTORS LTD
