

# City of Prince George

## HISTORY SHEET

**PID: -** 028396464 **Scale: 1:500**

**Legal:** LOT 2 **D.L.: -** 1605 **PLAN: -** EPP8499

**Address: -** 2949 VISTA RIDGE DR

**Sanitary Connection:#** **SIZE:** 100mmØ **MATERIAL** PVC **INV.** 671.44m **CONNECTED**

**Water Connection:#** **SIZE:** 19mmØ **MATERIAL:** COPPER **INV.** 671.47m

**Storm Connection:#** **SIZE** 100mmØ **MATERIAL** PVC **INV.** 671.45m **CONNECTED**

**Cash Receipt No's:** **WATER** **SANITARY** **STORM**

**CURB FROM PROPERTY LINE** 5m **PAVEMENT WIDTH** 10m

**B.C. HYDRO** 75mm DB2 **U/G CONNECTION** ✓

**B.C. TELEPHONE** 50mm DB2 **U/G CONNECTION** ✓

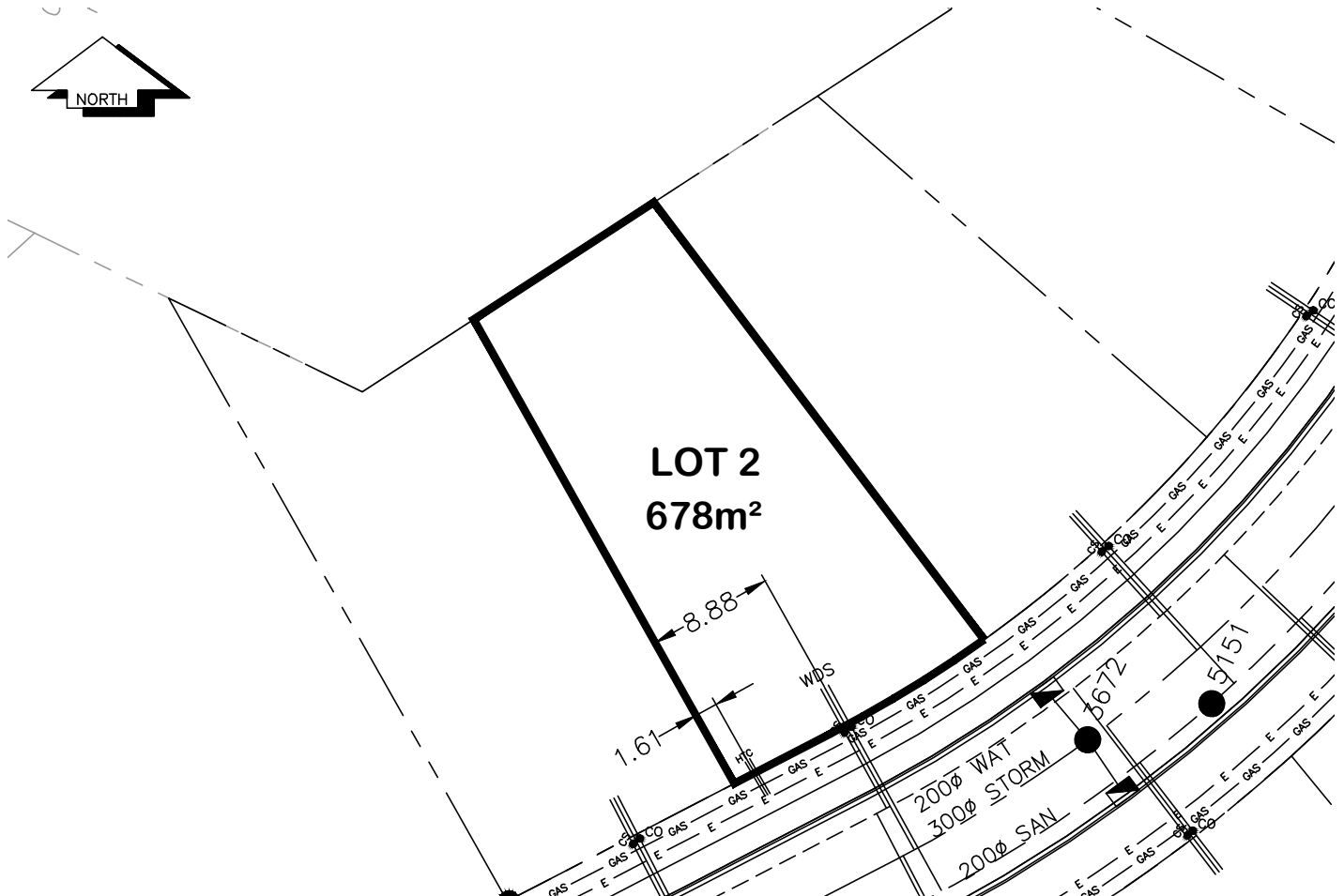
**TERASEN GAS** 42 PROP /P.E

**Information Sheets:** REF. DWGS. L&M ENGINEERING LTD. JOB. 1106-06-04 DWGS. (001-306)

**Comments:** CS CURB STOP SDW WATER SERVICE HOH HYDRO SERVICE  
CO CLEAN OUT STORM SERVICE CABLE SERVICE  
SANITARY SERVICE TELECOMMUNICATIONS GAS GAS  
E ELECTRICAL

**THE INFORMATION CONTAINED HEREIN IS FOR INTERNAL USE ONLY.**

**NOT TO BE RELIED UPON UNLESS CONFIRMED BY THE SITE INSPECTION AND/OR INVESTIGATION**



SANITARY, STORM & WATER SERVICE INVERTS	SANITARY	WATER	STORM
1. Distance from San. M.H.5151 toward San. M.H.STUB to lot service connection point is:	24.5m	N/A	N/A
1a.Distance from Stm. M.H.3672 toward Stm. M.H.STUB to lot service connection point is:	N/A	N/A	14.5m
2. Main Size at connection point is	200mmØ	200mmØ	300mmØ
3. Invert of main at conn. stub pt is	670.07m	670.08m	669.59m
4. Invert at service end is	671.54m	671.47m	671.55m
5. Cover at P/L in meters	2.14m	2.51m	2.14m
6. Survey Date: NOV,14,07Book Ref.: 1106-06-03By: FORESIGHT			

**SANITARY HISTORY:**

DATE INSTALLED: JULY 2010

INSTALLED BY: WESTERN INDUSTRIAL CONTRACTORS LTD

**WATER HISTORY:**

DATE INSTALLED: JULY 2010

INSTALLED BY: WESTERN INDUSTRIAL CONTRACTORS LTD

**STORM HISTORY:**

DATE INSTALLED: JULY 2010

INSTALLED BY: WESTERN INDUSTRIAL CONTRACTORS LTD