

City of Prince George

HISTORY SHEET

PID: 028353650

Scale: 1:500

Legal: LOT 35

D.L.: 2003

PLAN: BCP46243

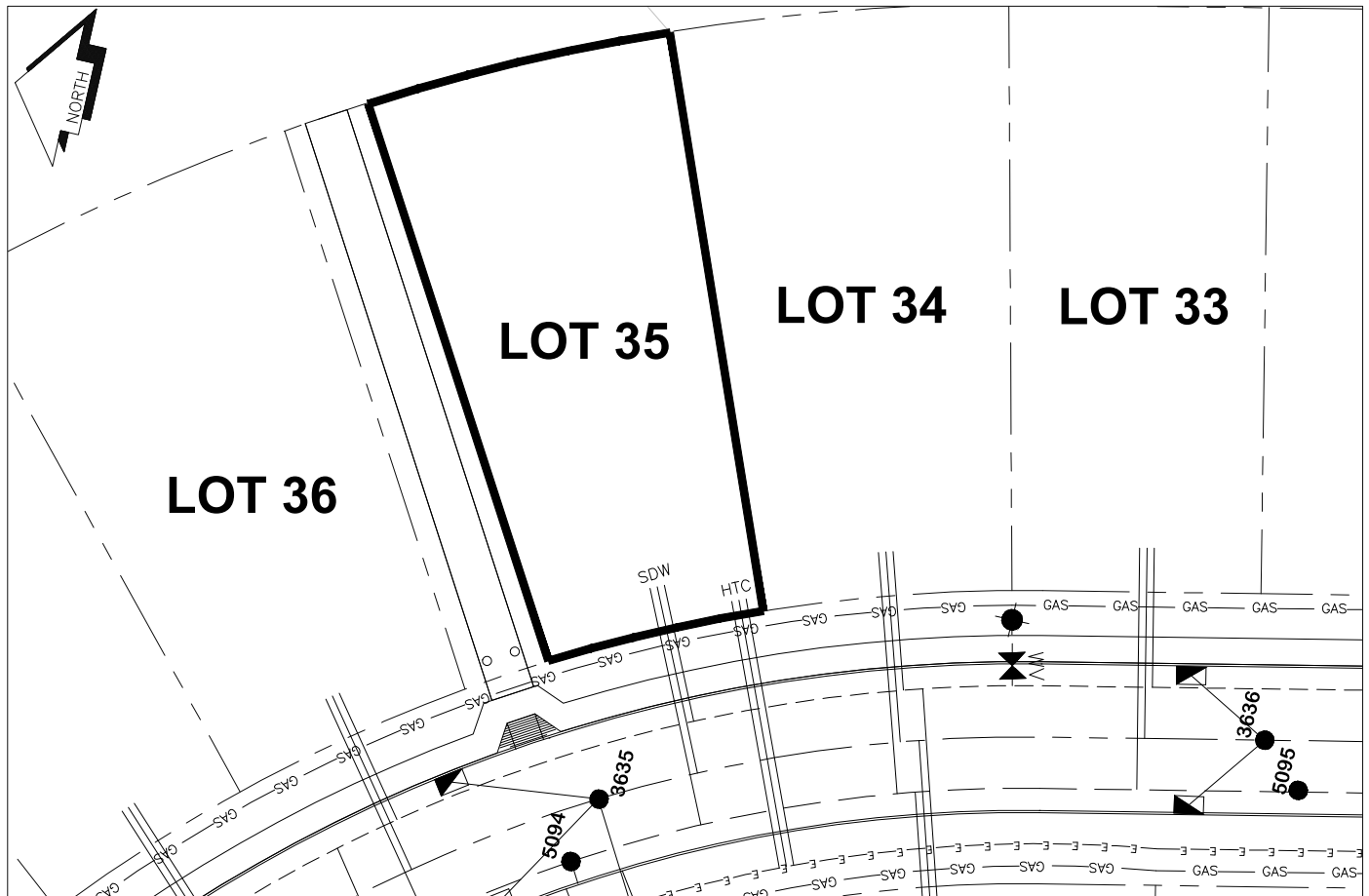
Address: 2662 MAURICE DR

| | | | | |
|-------------------------|--------------|------------------|-------------|-----------|
| Sanitary Connection:# | SIZE: 100mmØ | MATERIAL: PVC | INV. 719.08 | CONNECTED |
| Water Connection:# | SIZE: 19mmØ | MATERIAL: Copper | INV. 719.08 | |
| Storm Connection:# | SIZE: 100mmØ | MATERIAL: PVC | INV. 719.08 | CONNECTED |
| Cash Receipt No's: | WATER | SANITARY | STORM | |
| CURB FROM PROPERTY LINE | 5m | PAVEMENT WIDTH | 10m | |
| HYDRO | 75mm DB2 | U/G CONNECTION | ✓ | |
| TELEPHONE | 100mm DB2 | U/G CONNECTION | ✓ | |
| GAS | 42 PROP/P.E. | | | |

Information Sheets: REF. DWGS. L&M ENGINEERING LTD. JOB. 1273-05-04 DWGS. (001-307)

Comments: CS CURB STOP CO CLEAN OUT SDW WATER SERVICE STORM SERVICE SANITARY SERVICE HTC HYDRO SERVICE CABLE SERVICE TELECOMMUNICATIONS GAS GAS ELECTRICAL

THE INFORMATION CONTAINED HEREIN IS FOR INTERNAL USE ONLY.
NOT TO BE RELIED UPON UNLESS CONFIRMED BY THE SITE INSPECTION AND/OR INVESTIGATION



| SANITARY, STORM & WATER SERVICE INVERTS | SANITARY | WATER | STORM |
|---|----------|--------|--------|
| 1. Distance from San. M.H. <u>5094</u> toward San. M.H. <u>5095</u> to lot service connection point is: | 9m | N/A | N/A |
| 1a.Distance from Stm. M.H. <u>3635</u> toward Stm. M.H. <u>3636</u> to lot service connection point is: | N/A | N/A | 7m |
| 2. Main Size at connection point is | 200mmØ | 200mmØ | 525mmØ |
| 3. Invert of main at conn. stub point is | 717.48 | 717.92 | 717.02 |
| 4. Invert at service end is | 719.28 | 719.26 | 719.26 |
| 5. Cover at property line in meters | 2.20m | 2.38m | 2.20m |
| 6. Survey Date: MAY 2010 Book Ref.: 1273-05-03 By: PIERRE DORION | | | |
| | | | |
| | | | |
| | | | |
| | | | |
| | | | |
| | | | |
| | | | |
| | | | |

SANITARY HISTORY:

DATE INSTALLED: JUNE 2010

INSTALLED BY: PROGRESSIVE CONTRACTORS LTD.

WATER HISTORY:

DATE INSTALLED: JUNE 2010

INSTALLED BY: PROGRESSIVE CONTRACTORS LTD.

STORM HISTORY:

DATE INSTALLED: JUNE 2010

INSTALLED BY: PROGRESSIVE CONTRACTORS LTD.
