

City of Prince George

HISTORY SHEET

PID: 028353633

Scale: 1:500

Legal: LOT 33

D.L.: 2003

PLAN: BCP46243

Address: 2706 MAURICE DR

Sanitary Connection:#	SIZE:	100mmØ	MATERIAL: PVC	INV. 718.19	CONNECTED
-----------------------	-------	--------	---------------	-------------	-----------

Water Connection:#	SIZE:	19mmØ	MATERIAL: Copper	INV. 718.19	
--------------------	-------	-------	------------------	-------------	--

Storm Connection:#	SIZE	100mmØ	MATERIAL PVC	INV. 718.19	CONNECTED
--------------------	------	--------	--------------	-------------	-----------

Cash Receipt No's:	WATER	SANITARY	STORM
--------------------	-------	----------	-------

CURB FROM PROPERTY LINE	5m		PAVEMENT WIDTH	10m
-------------------------	----	--	----------------	-----

HYDRO	75mm DB2	U/G CONNECTION	✓
-------	----------	----------------	---

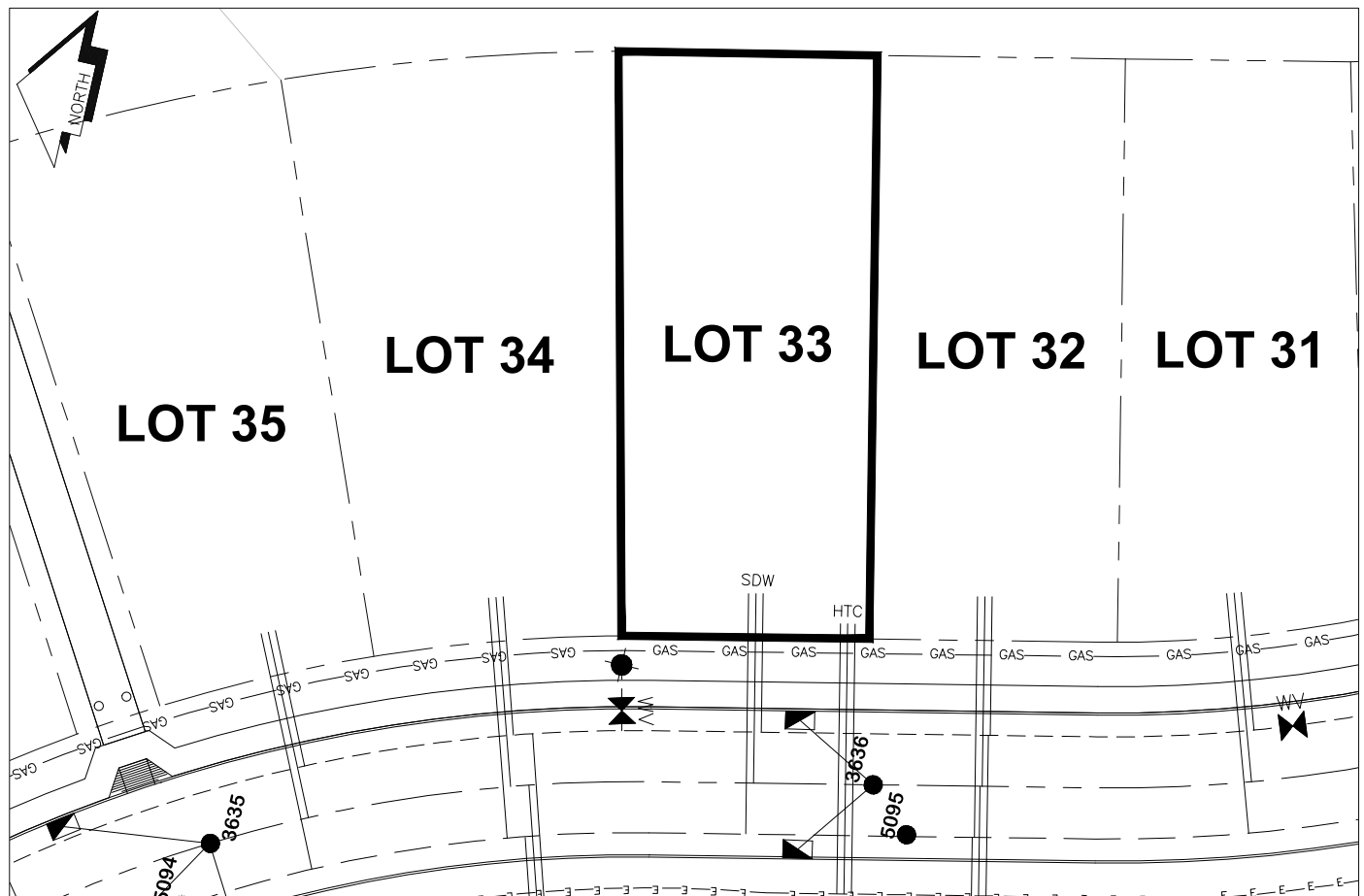
TELEPHONE	100mm DB2	U/G CONNECTION	✓
-----------	-----------	----------------	---

GAS	42 PROP/P.E.
-----	--------------

Information Sheets: REF. DWGS. L&M ENGINEERING LTD. JOB. 1273-05-04 DWGS. (001-307)

Comments:	CS CURB STOP CO CLEAN OUT	SDW WATER SERVICE STORM SERVICE SANITARY SERVICE	TCH HYDRO SERVICE CABLE SERVICE TELECOMMUNICATIONS	GAS GAS E ELECTRICAL
-----------	------------------------------	--	--	-------------------------

**THE INFORMATION CONTAINED HEREIN IS FOR INTERNAL USE ONLY.
NOT TO BE RELIED UPON UNLESS CONFIRMED BY THE SITE INSPECTION AND/OR INVESTIGATION**



SANITARY, STORM & WATER SERVICE INVERTS	SANITARY	WATER	STORM
1. Distance from San. M.H. <u>5094</u> toward San. M.H. <u>5095</u> to lot service connection point is:	39m	N/A	N/A
1a.Distance from Stm. M.H. <u>3635</u> toward Stm. M.H. <u>3636</u> to lot service connection point is:	N/A	N/A	38m
2. Main Size at connection point is	200mmØ	200mmØ	525mmØ
3. Invert of main at conn. stub point is	717.88	717.89	716.66
4. Invert at service end is	718.42	718.31	718.31
5. Cover at property line in meters	2.20m	2.28m	2.20m
6. Survey Date: MAY 2010 Book Ref.: 1273-05-03 By: PIERRE DORION			

SANITARY HISTORY:

DATE INSTALLED: JUNE 2010

INSTALLED BY: PROGRESSIVE CONTRACTORS LTD.

WATER HISTORY:

DATE INSTALLED: JUNE 2010

INSTALLED BY: PROGRESSIVE CONTRACTORS LTD.

STORM HISTORY:

DATE INSTALLED: JUNE 2010

INSTALLED BY: PROGRESSIVE CONTRACTORS LTD.
