

# City of Prince George

## HISTORY SHEET

**Scale: 1:500**

PLAN: BCP46243

Address: 2983 MAURICE DR

Sanitary Connection:#	SIZE: 100mmØ	MATERIAL: PVC	INV. 710.62	CONNECTED
-----------------------	--------------	---------------	-------------	-----------

Water Connection:#	SIZE: 19mmØ	MATERIAL: Copper	INV. 710.62
--------------------	-------------	------------------	-------------

Storm Connection:#	SIZE	100mmØ	MATERIAL	PVC	INV.	710.62	CONNECTED
--------------------	------	--------	----------	-----	------	--------	-----------

[illegible]

<b>CURB FROM PROPERTY LINE</b>	<b>5m</b>	<b>PAVEMENT WIDTH</b>	<b>10m</b>
--------------------------------	-----------	-----------------------	------------



**GAS** **42 PROP/P.E.**

Information Sheets: REF. DWGS. L&M ENGINEERING LTD. JOB. 1273-05-04 DWGS. (001-307)

Comments: CS CURB STOP  
CO CLEAN OUT

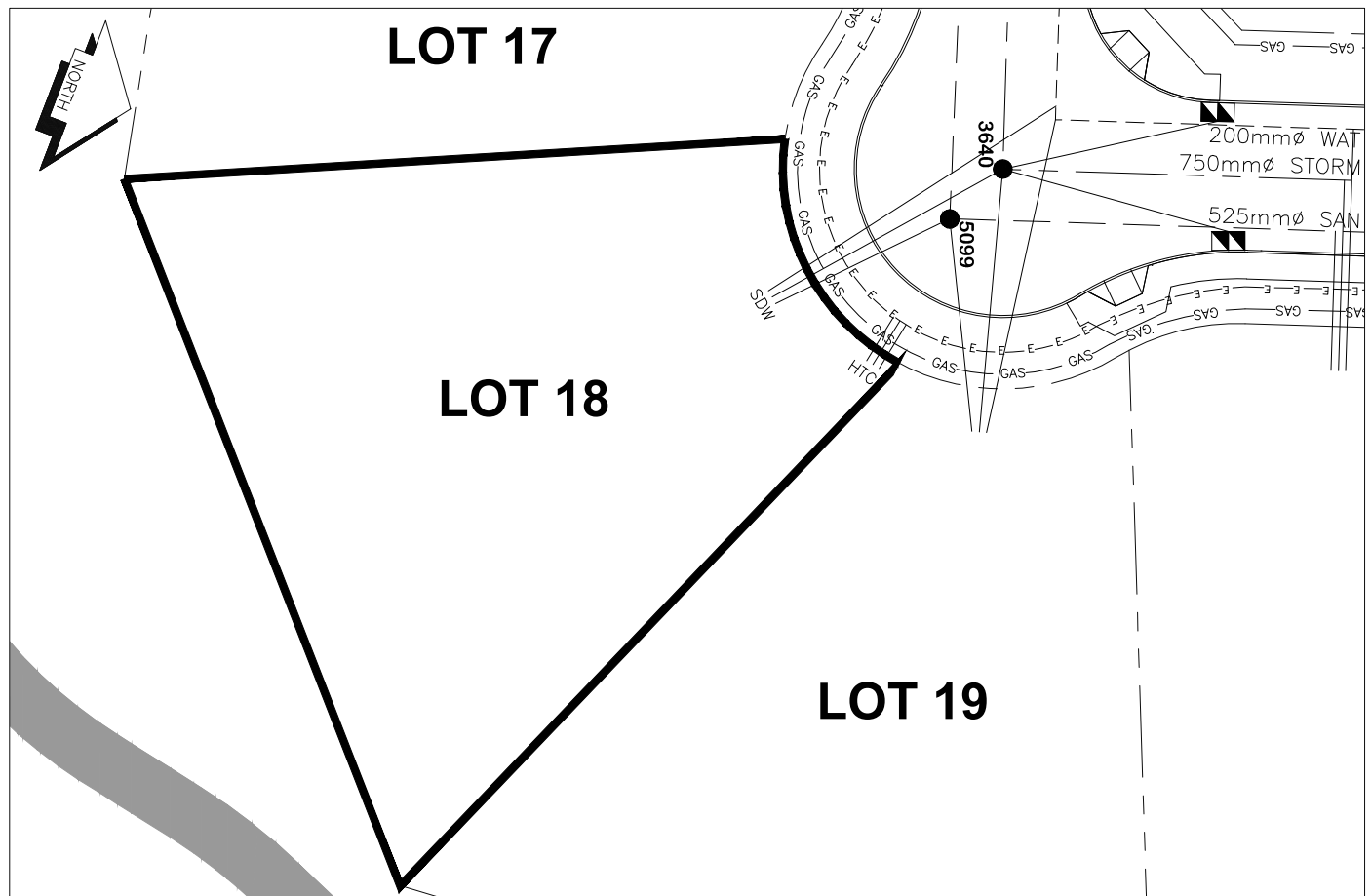
WATER SERVICE  
STORM SERVICE  
SANITARY SERVICE

HYDRO SERVICE  
CABLE SERVICE  
TELECOMMUNICATIONS

— GAS — GAS  
— E — ELECTRICAL

**THE INFORMATION CONTAINED HEREIN IS FOR INTERNAL USE ONLY.**

**NOT TO BE RELIED UPON UNLESS CONFIRMED BY THE SITE INSPECTION AND/OR INVESTIGATION**



SANITARY, STORM & WATER SERVICE INVERTS	SANITARY	WATER	STORM
1. Distance from San. M.H. 5099 toward San. M.H. 5099 to lot service connection point is:	N/A	N/A	N/A
1a.Distance from Stm. M.H. 3640 toward Stm. M.H.3640 to lot service connection point is:	N/A	N/A	N/A
2. Main Size at connection point is	525mmØ	200mmØ	750mmØ
3. Invert of main at conn. stub point is	N/A	709.45	N/A
4. Invert at service end is	710.76	710.76	710.78
5. Cover at property line in meters	2.35m	2.43m	2.35m
6. Survey Date: MAY 2010 Book Ref.: 1273-05-03 By: PIERRE DORION			

**SANITARY HISTORY:**

DATE INSTALLED: JUNE 2010

INSTALLED BY: PROGRESSIVE CONTRACTORS LTD.

---

---

---

---

---

---

---

---

---

---

**WATER HISTORY:**

DATE INSTALLED: JUNE 2010

INSTALLED BY: PROGRESSIVE CONTRACTORS LTD.

---

---

---

---

---

---

---

---

---

---

**STORM HISTORY:**

DATE INSTALLED: JUNE 2010

INSTALLED BY: PROGRESSIVE CONTRACTORS LTD.

---

---

---

---

---

---

---

---

---

---