

City of Prince George

HISTORY SHEET

PID: 028353471

Scale: 1:500

Legal: LOT 17

D.L.: 2003

PLAN: BCP46243

Address: 2955 MAURICE DR

Sanitary Connection:#	SIZE: 100mmØ	MATERIAL: PVC	INV. 710.30	CONNECTED
-----------------------	--------------	---------------	-------------	-----------

Water Connection:#	SIZE: 19mmØ	MATERIAL: Copper	INV. 710.30
--------------------	-------------	------------------	-------------

Storm Connection:#	SIZE	100mmØ	MATERIAL	PVC	INV.	710.30	CONNECTED
--------------------	------	--------	----------	-----	------	--------	-----------

Cash Receipt No's:	WATER	SANITARY	STORM
--------------------	-------	----------	-------

CURB FROM PROPERTY LINE 5m **PAVEMENT WIDTH** 10m

HYDRO	75mm DB2	U/G CONNECTION
-------	----------	----------------

TELEPHONE	100mm DB2	U/G CONNECTION
-----------	-----------	----------------

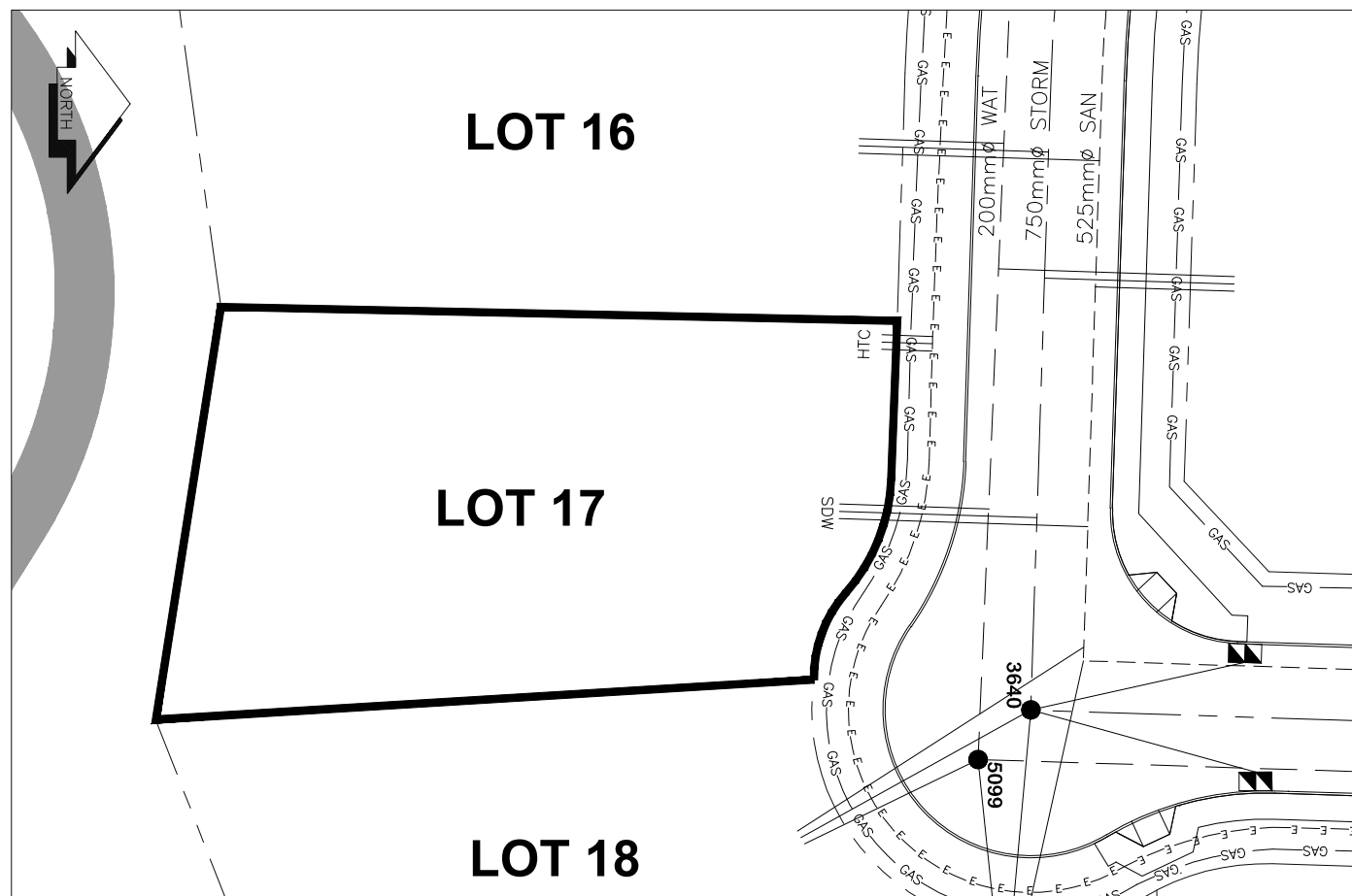
GAS 42 PROP/P.E.

Information Sheets: REF. DWGS. L&M ENGINEERING LTD. JOB. 1273-05-04 DWGS. (001-307)

Comments: CS CURB STOP WATER SERVICE HYDRO SERVICE GAS GAS
 CO CLEAN OUT SDW STORM SERVICE TCH CABLE SERVICE E ELECTRICAL
 SANITARY SERVICE TELECOMMUNICATIONS

THE INFORMATION CONTAINED HEREIN IS FOR INTERNAL USE ONLY.

NOT TO BE RELIED UPON UNLESS CONFIRMED BY THE SITE INSPECTION AND/OR INVESTIGATION



SANITARY, STORM & WATER SERVICE INVERTS	SANITARY	WATER	STORM
1. Distance from San. M.H. <u>5098</u> toward San. M.H. <u>5099</u> to lot service connection point is:	40m	N/A	N/A
1a.Distance from Stm. M.H. <u>3639</u> toward Stm. M.H. <u>3640</u> to lot service connection point is:	N/A	N/A	44m
2. Main Size at connection point is	525mmØ	200mmØ	750mmØ
3. Invert of main at conn. stub point is	709.54	709.12	709.25
4. Invert at service end is	710.48	710.48	710.53
5. Cover at property line in meters	2.18m	2.26m	2.18m
6. Survey Date: MAY 2010 Book Ref.: 1273-05-03 By: PIERRE DORION			

SANITARY HISTORY:

DATE INSTALLED: JUNE 2010

INSTALLED BY: PROGRESSIVE CONTRACTORS LTD.

WATER HISTORY:

DATE INSTALLED: JUNE 2010

INSTALLED BY: PROGRESSIVE CONTRACTORS LTD.

STORM HISTORY:

DATE INSTALLED: JUNE 2010

INSTALLED BY: PROGRESSIVE CONTRACTORS LTD.
