

# City of Prince George

## HISTORY SHEET

PID: 028330978

Scale: 1:500

Legal: LOT 16

D.L.: 2014

PLAN: EPP5390

Address: - 7505 Stillwater Crescent

Sanitary Connection:#	SIZE:	100mmØ	MATERIAL:	PVC	INV.	583.34	CONNECTED
-----------------------	-------	--------	-----------	-----	------	--------	-----------

Water Connection:#	SIZE:	19mmØ	MATERIAL:	copper	INV.	583.41	METER
--------------------	-------	-------	-----------	--------	------	--------	-------

Storm Connection:#	SIZE:	100mmØ	MATERIAL:	PVC	INV.	583.34	CONNECTED
--------------------	-------	--------	-----------	-----	------	--------	-----------

Cash Receipt No's:	WATER	SANITARY	STORM
--------------------	-------	----------	-------

CURB FROM PROPERTY LINE	5m	PAVEMENT WIDTH	10m
-------------------------	----	----------------	-----

B.C. HYDRO	75mm DB2	U/G CONNECTION	✓
------------	----------	----------------	---

B.C. TELEPHONE	50mm DB2	U/G CONNECTION	✓
----------------	----------	----------------	---

TERASEN	42 PROP/P.E.
---------	--------------

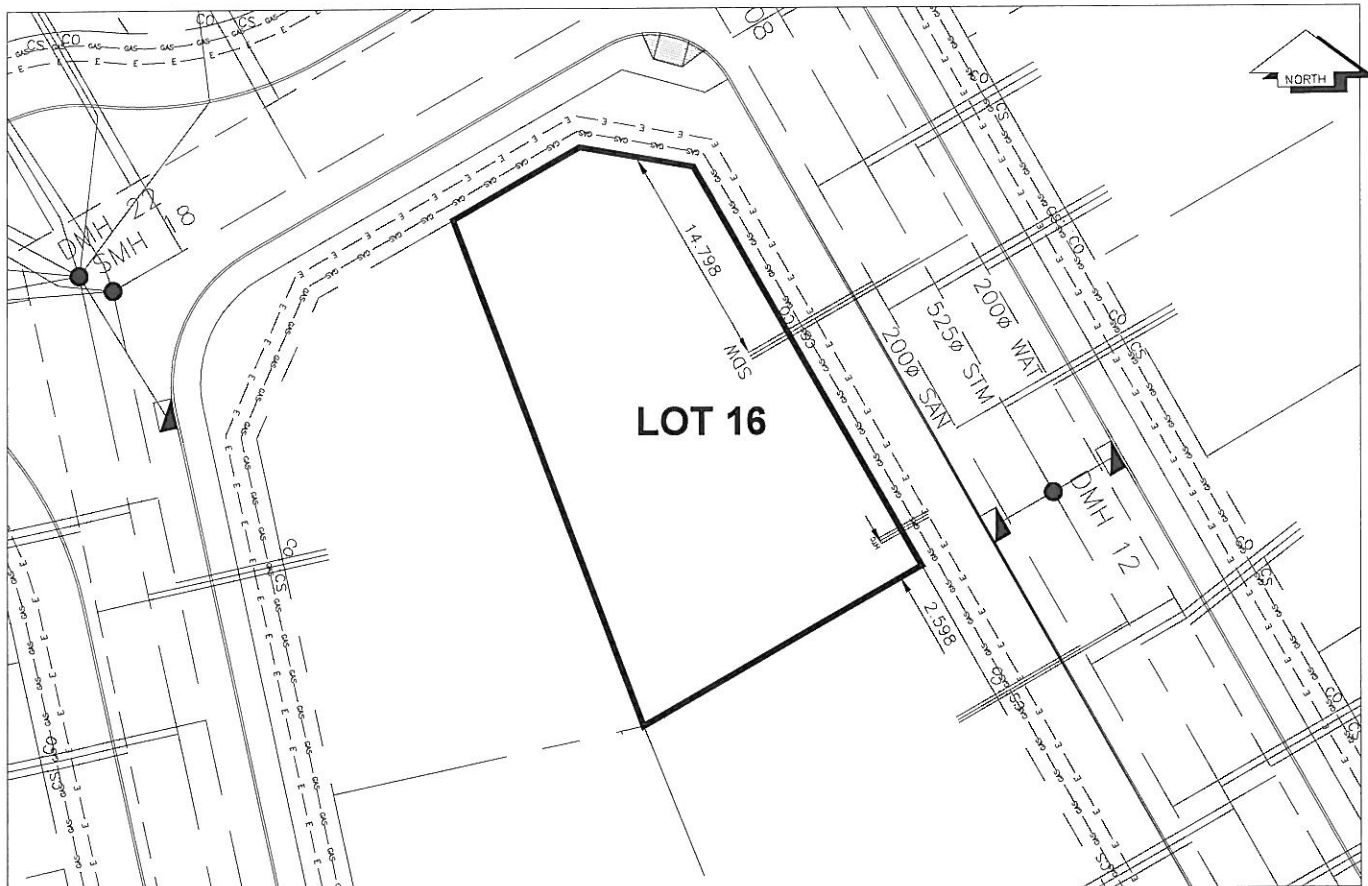
Information Sheets: REFERENCE DRAWINGS L&M ENGINEERING LIMITED JOB NO. 1140-07-04

Comments:

CS CURB STOP	SDW WATER SERVICE	TCH HYDRO SERVICE	GAS GAS
CO CLEAN OUT	SDW STORM SERVICE	TCH CABLE SERVICE	E ELECTRICAL
	SDW SANITARY SERVICE	TCH TELECOMMUNICATIONS	

THE INFORMATION CONTAINED HEREIN IS FOR INTERNAL USE ONLY.

NOT TO BE RELIED UPON UNLESS CONFIRMED BY THE SITE INSPECTION AND/OR INVESTIGATION



SANITARY, STORM & WATER SERVICE INVERTS	SANITARY	WATER	STORM
1. Distance from San. M.H. <u>08</u> toward San. M.H. <u>09</u> to lot service connection point is:	25m	N/A	N/A
1a.Distance from Stm. M.H. <u>11</u> toward Stm. M.H. <u>12</u> to lot service connection point is:	N/A	N/A	92m
2. Main Size at connection point is	200mm	200mm	525mm
3. Invert of main at conn. stub point is	582.48	582.83	582.23
4. Invert at service end is	583.34	583.41	583.34
5. Cut at property line in meters	3.17m	3.18m	3.17m
6. Survey Date: OCT 2009    Book Ref.:1140-07-04    By:FORESIGHT SURVEY & DESIGN			

**SANITARY HISTORY:**

Installed By: Fortwood Homes Ltd.

**WATER HISTORY:**

Installed By: Fortwood Homes Ltd.

**STORM HISTORY:**

Installed By: Fortwood Homes Ltd.