

City of Prince George

HISTORY SHEET

PID: 028330889

Scale: 1:500

Legal: LOT 7

D.L.: 2014

PLAN: EPP5390

Address: 7530 Stillwater Cresscent

Sanitary Connection:#	SIZE: 100mmØ	MATERIAL: PVC	INV. 584.01	CONNECTED
-----------------------	--------------	---------------	-------------	-----------

Water Connection:#	SIZE: 19mmØ	MATERIAL: copper	INV. 583.87	METER
--------------------	-------------	------------------	-------------	-------

Storm Connection:#	SIZE 100mmØ	MATERIAL PVC	INV. 584.20	CONNECTED
--------------------	-------------	--------------	-------------	-----------

Cash Receipt No's:	WATER	SANITARY	STORM
--------------------	-------	----------	-------

CURB FROM PROPERTY LINE	5m	PAVEMENT WIDTH	10m
-------------------------	----	----------------	-----

B.C. HYDRO	75mm DB2	U/G CONNECTION	✓
------------	----------	----------------	---

B.C. TELEPHONE	50mm DB2	U/G CONNECTION	✓
----------------	----------	----------------	---

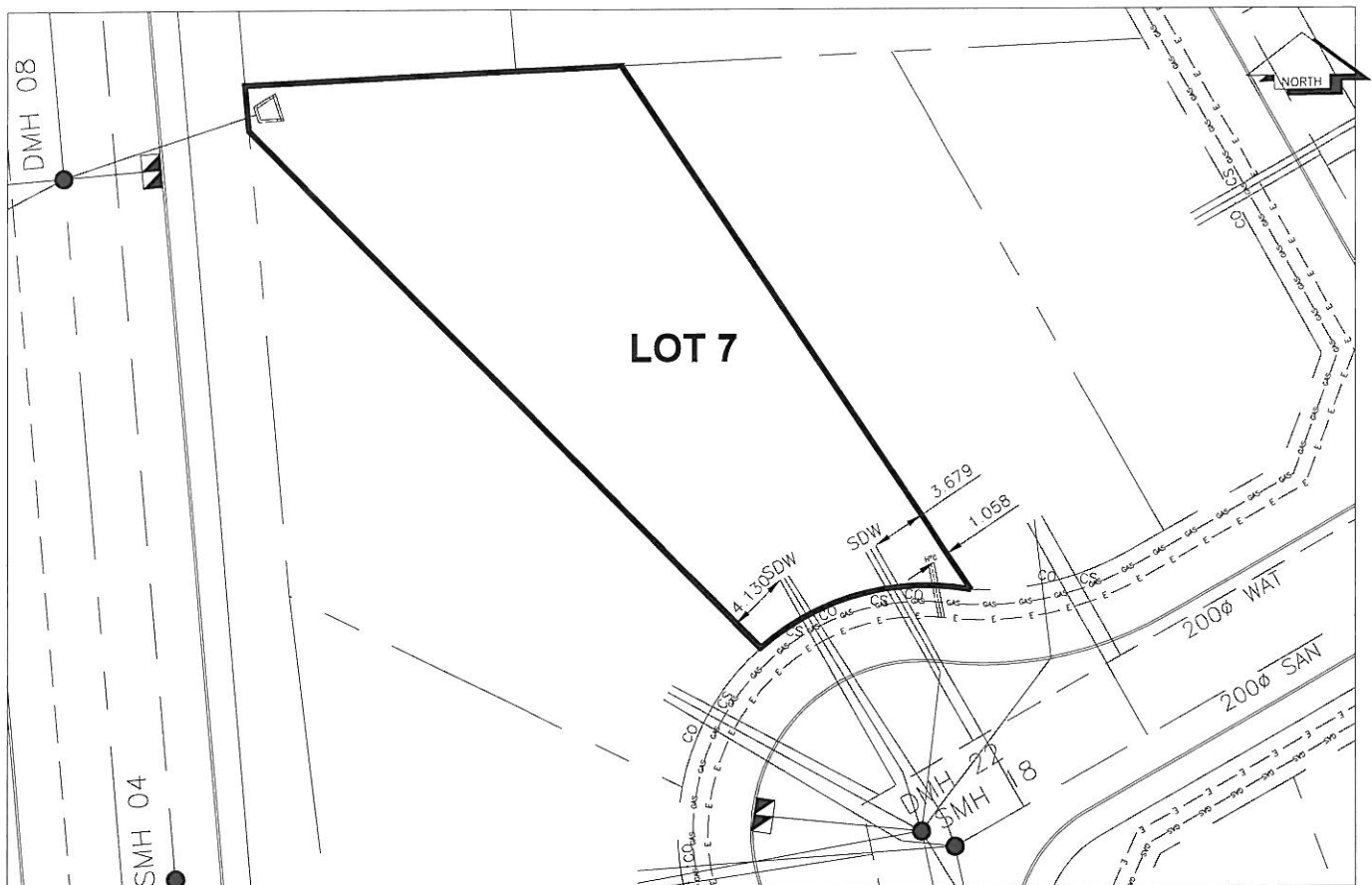
TERASEN	42 PROP/P.E.
---------	--------------

Information Sheets: REFERENCE DRAWINGS L&M ENGINEERING LIMITED JOB NO. 1140-07-04

Comments:	CS CURB STOP	SDW WATER SERVICE	TCH HYDRO SERVICE	GAS
	CO CLEAN OUT	SDW STORM SERVICE	TCH CABLE SERVICE	E ELECTRICAL
		SDW SANITARY SERVICE	TCH TELECOMMUNICATIONS	

THE INFORMATION CONTAINED HEREIN IS FOR INTERNAL USE ONLY.

NOT TO BE RELIED UPON UNLESS CONFIRMED BY THE SITE INSPECTION AND/OR INVESTIGATION



SANITARY, STORM & WATER SERVICE INVERTS NORTH	SANITARY	WATER	STORM
1. Distance from San. M.H. <u>18</u> toward San. M.H. <u>17</u> to lot service connection point is:	0m	N/A	N/A
1a.Distance from Stm. M.H. <u>22</u> toward Stm. M.H. <u>11</u> to lot service connection point is:	N/A	N/A	0m
2. Main Size at connection point is	200mmØ	200mmØ	250mmØ
3. Invert of main at conn. stub point is	582.73	583.29	583.74
4. Invert at service end is	584.01	583.87	584.20
5. Cut at property line in meters	2.46m	2.68m	2.27m
6. Survey Date: OCT 2009 Book Ref.: 1140-07-04 By: FORESIGHT SURVEY & DESIGN			
SANITARY, STORM & WATER SERVICE INVERTS SOUTH	SANITARY	WATER	STORM
1. Distance from San. M.H. <u>18</u> toward San. M.H. <u>08</u> to lot service connection point is:	5m	N/A	N/A
1a.Distance from Stm. M.H. <u>22</u> toward Stm. M.H. <u>21</u> to lot service connection point is:	N/A	N/A	0m
2. Main Size at connection point is	200mmØ	200mmØ	250mmØ
3. Invert of main at conn. stub point is	582.59	583.32	583.74
4. Invert at service end is	583.87	583.86	583.24
5. Cut at property line in meters	2.64m	2.73m	2.27m
6. Survey Date: OCT 2009 Book Ref.: 1140-07-04 By: FORESIGHT SURVEY & DESIGN			

SANITARY HISTORY:

Installed By: Fortwood Homes Ltd.

WATER HISTORY:

Installed By: Fortwood Homes Ltd.

STORM HISTORY:

Installed By: Fortwood Homes Ltd.