

# City of Prince George

## HISTORY SHEET

PID: .028330862

Scale: 1:500

Legal: LOT 5

D.L.: 2014

PLAN: EPP5390

Address: - 7502 Stillwater Crescent

Sanitary Connection:#	SIZE: 100mmØ	MATERIAL: PVC	INV. 584.00	CONNECTED
-----------------------	--------------	---------------	-------------	-----------

Water Connection:#	SIZE: 19mmØ	MATERIAL: copper	INV. 584.16	METER
--------------------	-------------	------------------	-------------	-------

Storm Connection:#	SIZE 100mmØ	MATERIAL PVC	INV. 584.17	CONNECTED
--------------------	-------------	--------------	-------------	-----------

Cash Receipt No's:	WATER	SANITARY	STORM
--------------------	-------	----------	-------

CURB FROM PROPERTY LINE	5m	PAVEMENT WIDTH	10m
-------------------------	----	----------------	-----

B.C. HYDRO	75mm DB2	U/G CONNECTION	✓
------------	----------	----------------	---

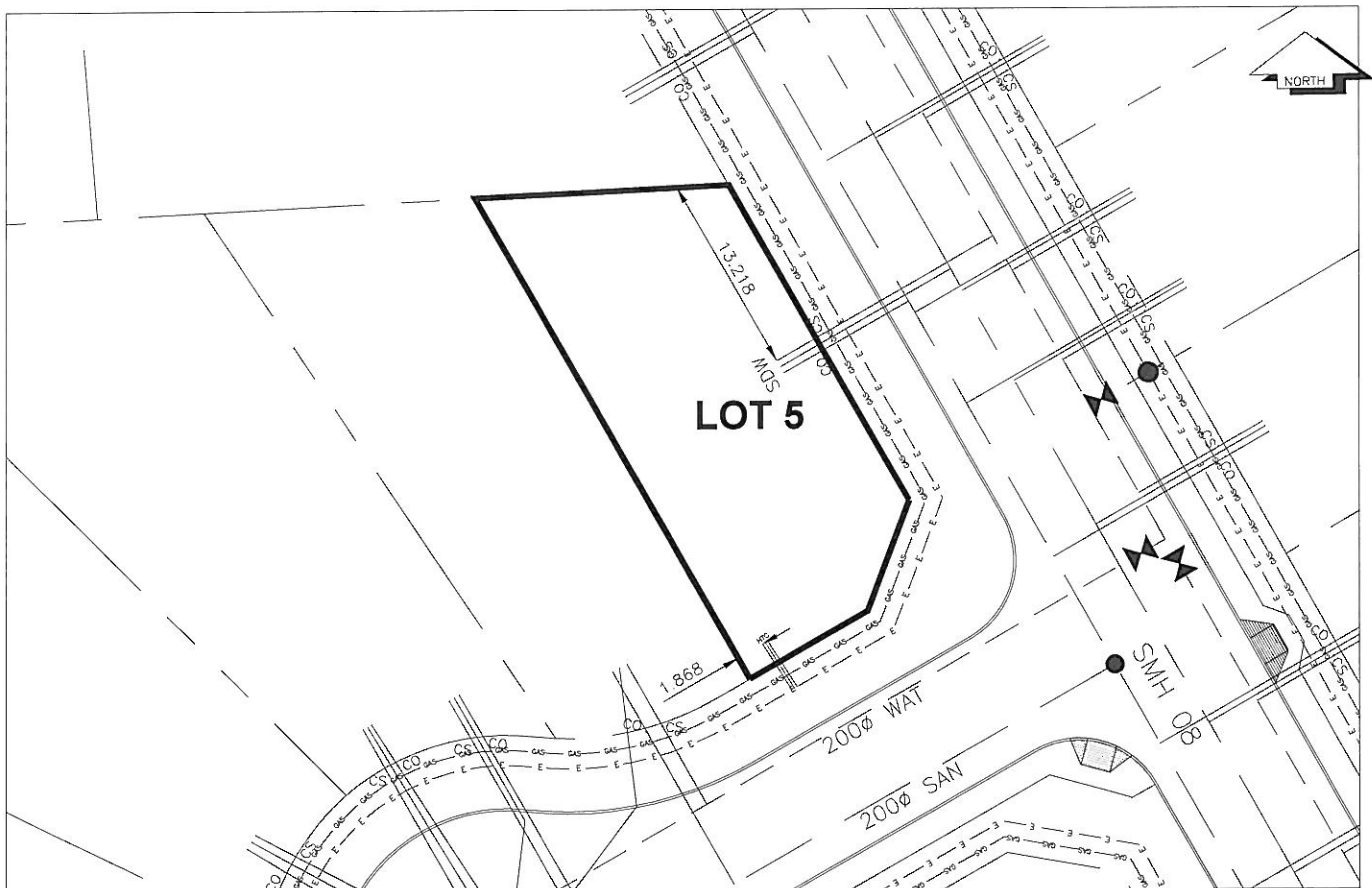
B.C. TELEPHONE	50mm DB2	U/G CONNECTION	✓
----------------	----------	----------------	---

TERASEN	42 PROP/P.E.
---------	--------------

Information Sheets: REFERENCE DRAWINGS L&M ENGINEERING LIMITED JOB NO. 1140-07-04

Comments: CS CURB STOP SDW WATER SERVICE TCH HYDRO SERVICE GAS GAS  
CO CLEAN OUT SDW STORM SERVICE TCH CABLE SERVICE E ELECTRICAL  
 SDW SANITARY SERVICE TCH TELECOMMUNICATIONS

**THE INFORMATION CONTAINED HEREIN IS FOR INTERNAL USE ONLY.**  
**NOT TO BE RELIED UPON UNLESS CONFIRMED BY THE SITE INSPECTION AND/OR INVESTIGATION**



SANITARY, STORM & WATER SERVICE INVERTS	SANITARY	WATER	STORM
1. Distance from San. M.H. <u>07</u> toward San. M.H. <u>08</u> to lot service connection point is:	39m	N/A	N/A
1a. Distance from Stm. M.H. <u>11</u> toward Stm. M.H. <u>12</u> to lot service connection point is:	N/A	N/A	39m
2. Main Size at connection point is	200mm	200mm	525mm
3. Invert of main at conn. stub point is	582.28	583.70	582.52
4. Invert at service end is	584.00	584.16	584.17
5. Cut at property line in meters	2.96m	2.88m	2.79m
6. Survey Date: OCT 2009    Book Ref.: 1140-07-04    By: FORESIGHT SURVEY & DESIGN			

**SANITARY HISTORY:**

Installed By: Fortwood Homes Ltd.

**WATER HISTORY:**

Installed By: Fortwood Homes Ltd.

**STORM HISTORY:**

Installed By: Fortwood Homes Ltd.