

City of Prince George

HISTORY SHEET

PID: 028110129

Scale: 1:500

Legal: LOT 8

D.L.: 1600, 2003

PLAN: BCP42930

Address: 2585 Kenney Court

Sanitary Connection:#	SIZE: 100mmØ	MATERIAL: PVC	INV. 718.81m	CONNECTED
-----------------------	--------------	---------------	--------------	-----------

Water Connection:#	SIZE: 19mmØ	MATERIAL: Copper	INV. 718.73m	
--------------------	-------------	------------------	--------------	--

Storm Connection:#	SIZE: 100mmØ	MATERIAL: PVC	INV. 718.73m	CONNECTED
--------------------	--------------	---------------	--------------	-----------

Cash Receipt No's:	WATER	SANITARY	STORM
--------------------	-------	----------	-------

CURB FROM PROPERTY LINE	5m	PAVEMENT WIDTH	10m
-------------------------	----	----------------	-----

HYDRO	75mm DB2	U/G CONNECTION	✓
-------	----------	----------------	---

TELEPHONE	100mm DB2	U/G CONNECTION	✓
-----------	-----------	----------------	---

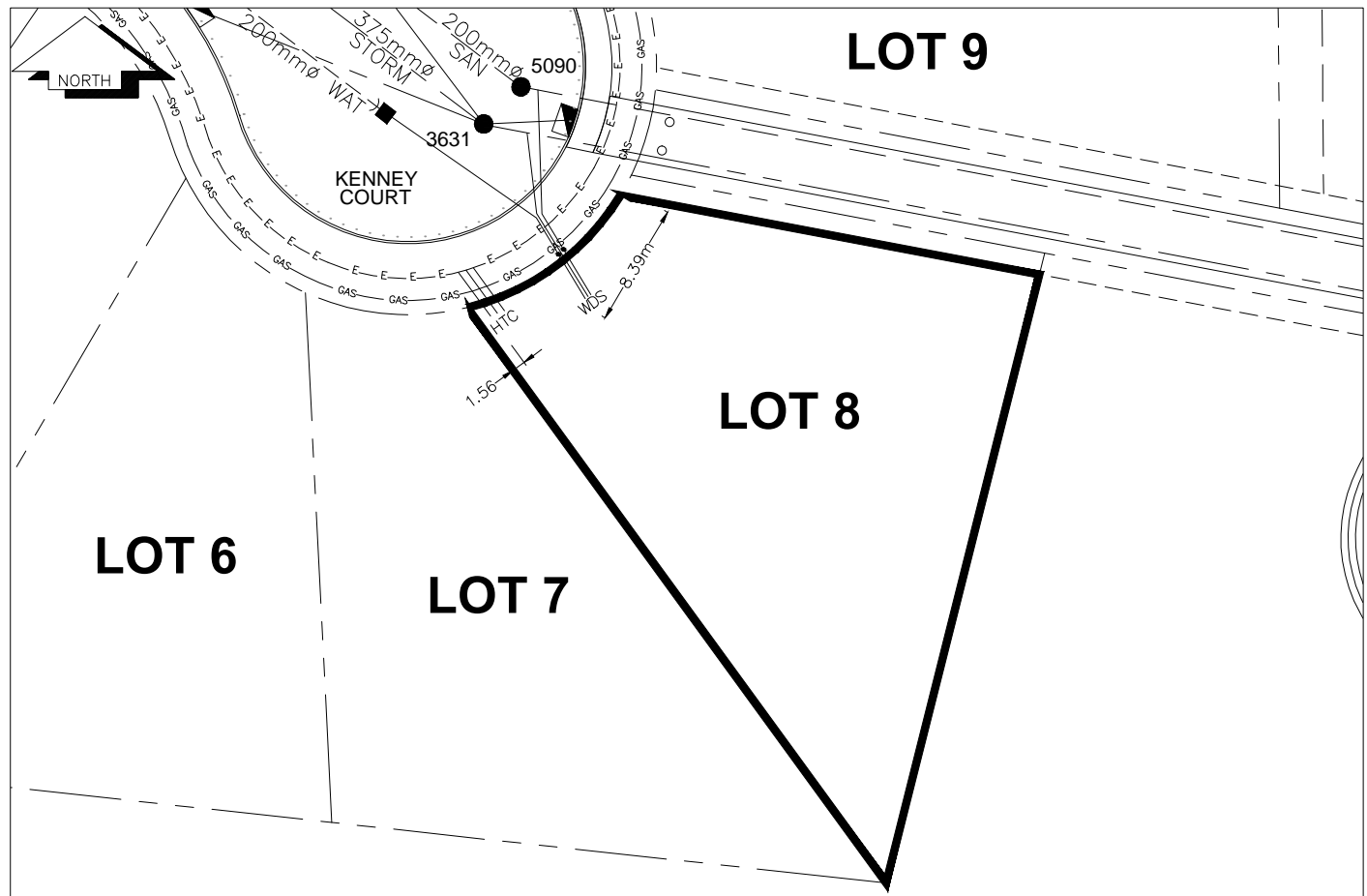
GAS	42 PROP/P.E.		
-----	--------------	--	--

Information Sheets: REF. DWGS. L&M ENGINEERING LTD. JOB. 1273-05-04 DWGS. (001-307)

Comments: CS CURB STOP CO CLEAN OUT SDW WATER SERVICE STORM SERVICE SANITARY SERVICE TCH HYDRO SERVICE CABLE SERVICE TELECOMMUNICATIONS GAS GAS E ELECTRICAL

THE INFORMATION CONTAINED HEREIN IS FOR INTERNAL USE ONLY.

NOT TO BE RELIED UPON UNLESS CONFIRMED BY THE SITE INSPECTION AND/OR INVESTIGATION



SANITARY, STORM & WATER SERVICE INVERTS	SANITARY	WATER	STORM
1. Distance from San. M.H. <u>5090</u> toward San. M.H. <u>5091</u> to lot service connection point is:	1m	N/A	N/A
1a.Distance from Stm. M.H. <u>3631</u> toward Stm. M.H. <u>3632</u> to lot service connection point is:	N/A	N/A	3m
2. Main Size at connection point is	200mmØ	200mmØ	375mmØ
3. Invert of main at conn. stub point is	718.43m	718.21m	718.23m
4. Invert at service end is	718.81m	718.73m	718.73m
5. Cover at property line in meters	2.43m	2.59m	2.51m
6. Survey DateMAY 2010 Book Ref.:1273-05-03 By: Pierre Dorion			

SANITARY HISTORY:

DATE INSTALLED: AUGUST 2009

INSTALLED BY:PROGRESSIVE CONTRACTORS LTD.

WATER HISTORY:

DATE INSTALLED: AUGUST 2009

INSTALLED BY:PROGRESSIVE CONTRACTORS LTD.

STORM HISTORY:

DATE INSTALLED: AUGUST 2009

INSTALLED BY:PROGRESSIVE CONTRACTORS LTD.
