

# City of Prince George

## HISTORY SHEET

PID: 028110111

Scale: 1:500

Legal: LOT 7

D.L.: 1600

PLAN: BCP42930

Address: 2569 Kenney Court

Sanitary Connection:#	SIZE: 100mmØ	MATERIAL: PVC	INV. 719.12m	CONNECTED
-----------------------	--------------	---------------	--------------	-----------

Water Connection:#	SIZE: 19mmØ	MATERIAL: Copper	INV. 719.05m	
--------------------	-------------	------------------	--------------	--

Storm Connection:#	SIZE: 100mmØ	MATERIAL: PVC	INV. 719.05m	CONNECTED
--------------------	--------------	---------------	--------------	-----------

Cash Receipt No's:	WATER	SANITARY	STORM
--------------------	-------	----------	-------

CURB FROM PROPERTY LINE	5m	PAVEMENT WIDTH	10m
-------------------------	----	----------------	-----

HYDRO	75mm DB2	U/G CONNECTION	✓
-------	----------	----------------	---

TELEPHONE	100mm DB2	U/G CONNECTION	✓
-----------	-----------	----------------	---

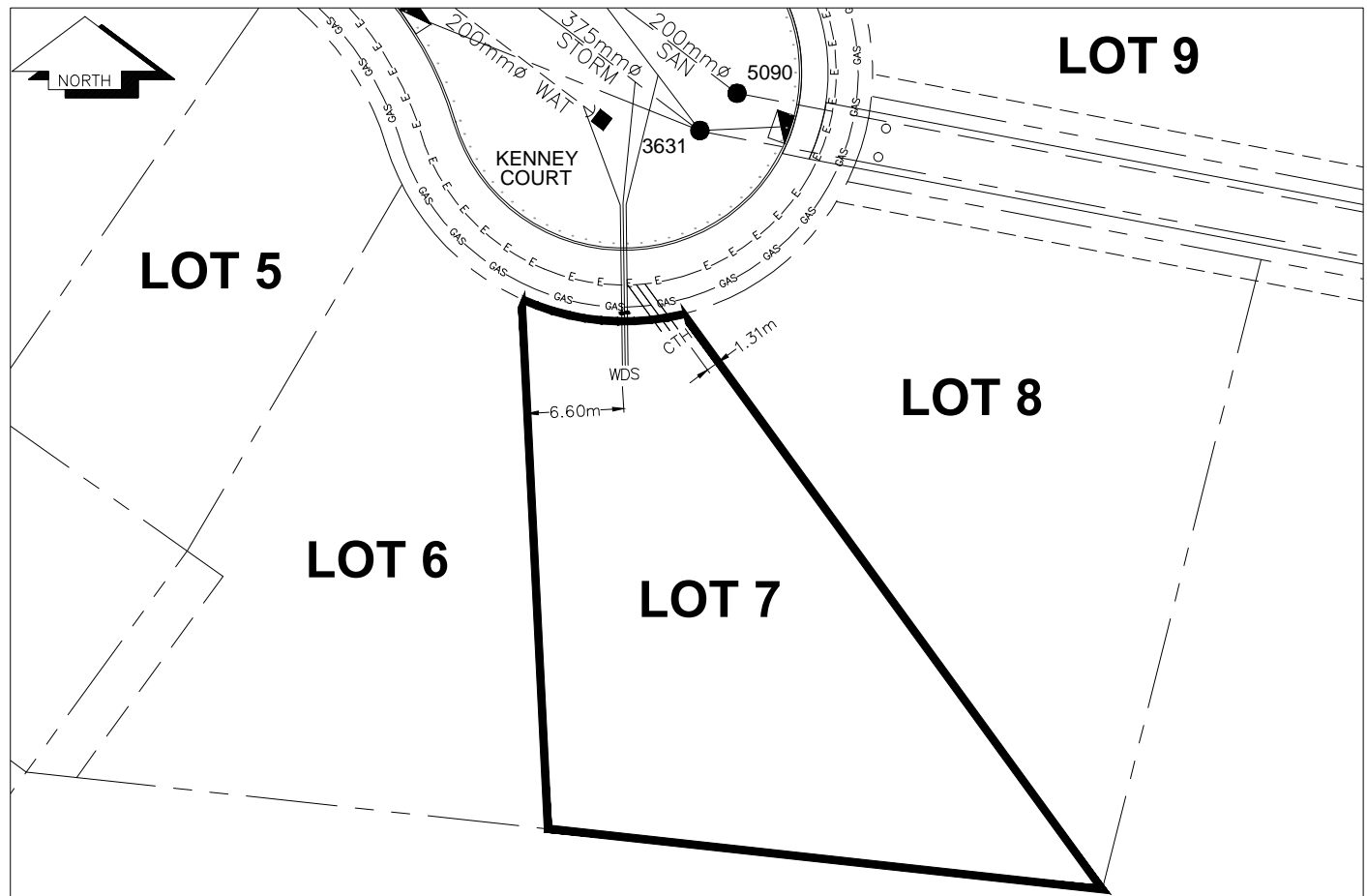
GAS	42 PROP/P.E.		
-----	--------------	--	--

Information Sheets: REF. DWGS. L&M ENGINEERING LTD. JOB. 1273-05-04 DWGS. (001-307)

Comments: CS CURB STOP CO CLEAN OUT SDW WATER SERVICE STORM SERVICE SANITARY SERVICE TCH HYDRO SERVICE CABLE SERVICE TELECOMMUNICATIONS GAS GAS E ELECTRICAL

THE INFORMATION CONTAINED HEREIN IS FOR INTERNAL USE ONLY.

NOT TO BE RELIED UPON UNLESS CONFIRMED BY THE SITE INSPECTION AND/OR INVESTIGATION



SANITARY, STORM & WATER SERVICE INVERTS	SANITARY	WATER	STORM
1. Distance from San. M.H. 5088 toward San. M.H. 5090 to lot service connection point is:	68m	N/A	N/A
1a.Distance from Stm. M.H. 3629 toward Stm. M.H.3631 to lot service connection point is:	N/A	N/A	71m
2. Main Size at connection point is	200mmØ	200mmØ	375mmØ
3. Invert of main at conn. stub point is	718.77m	718.28m	718.56m
4. Invert at service end is	719.12m	719.05m	719.05m
5. Cover at property line in meters	2.33m	2.48m	2.40m
6. Survey DateMAY 2010 Book Ref.:1273-05-03 By: Pierre Dorion			

### SANITARY HISTORY:

DATE INSTALLED: AUGUST 2009

INSTALLED BY:PROGRESSIVE CONTRACTORS LTD.

### WATER HISTORY:

DATE INSTALLED: AUGUST 2009

INSTALLED BY:PROGRESSIVE CONTRACTORS LTD.

### STORM HISTORY:

DATE INSTALLED: AUGUST 2009

INSTALLED BY:PROGRESSIVE CONTRACTORS LTD.