

# City of Prince George

## HISTORY SHEET

PID: 028110056

Scale: 1:500

Legal: LOT 1

D.L.: 1600

PLAN: BCP42930

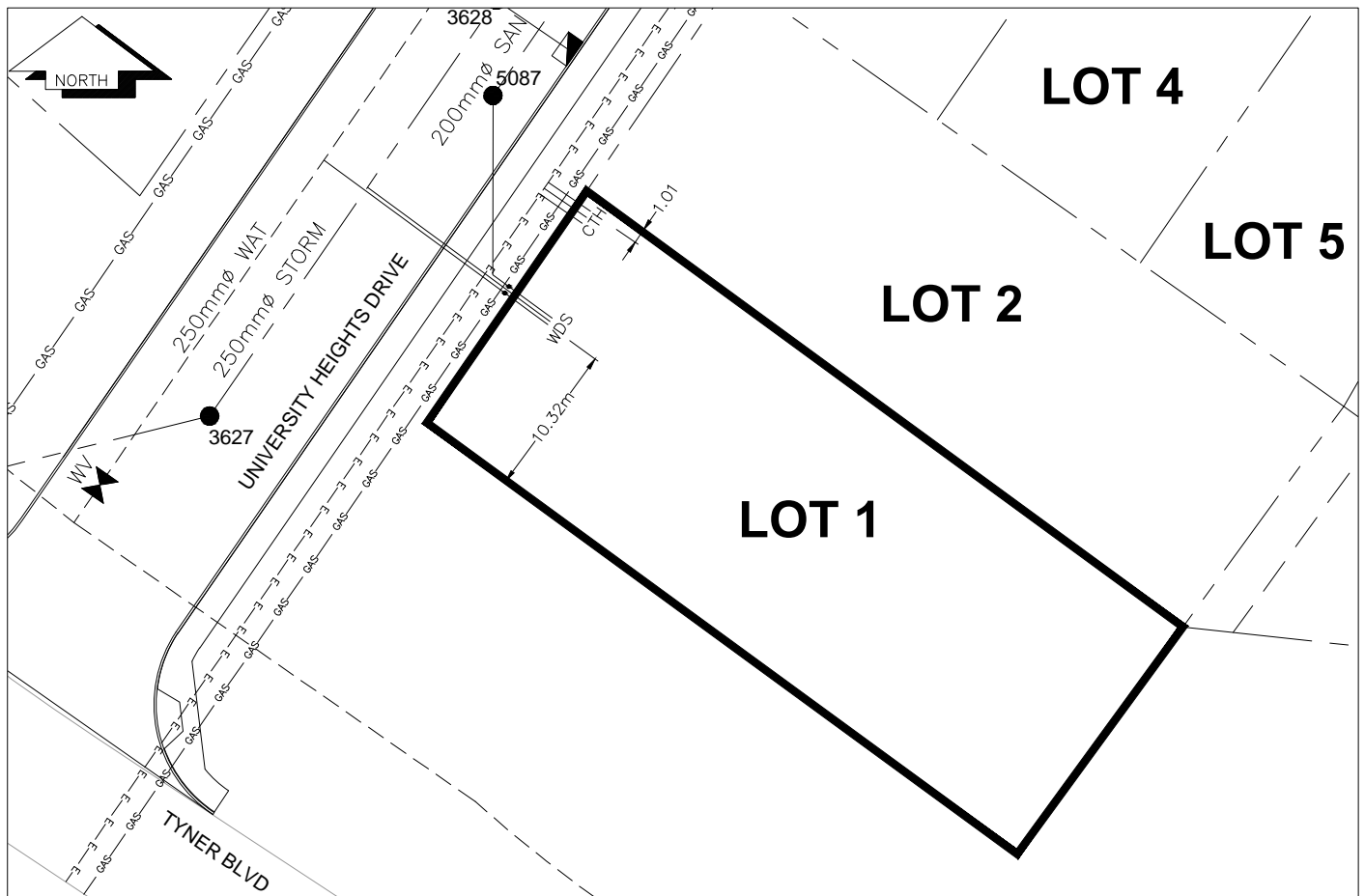
Address: 4589 University Heights Drive

Sanitary Connection:#	SIZE: 100mmØ	MATERIAL: PVC	INV. 723.68m	CONNECTED
Water Connection:#	SIZE: 19mmØ	MATERIAL: Copper	INV. 723.65m	
Storm Connection:#	SIZE: 100mmØ	MATERIAL: PVC	INV. 723.65m	CONNECTED
Cash Receipt No's:	WATER	SANITARY	STORM	
CURB FROM PROPERTY LINE	6m	PAVEMENT WIDTH	13m	
HYDRO	75mm DB2	U/G CONNECTION	✓	
TELEPHONE	100mm DB2	U/G CONNECTION	✓	
GAS	42 PROP/P.E.			

Information Sheets: REF. DWGS. L&M ENGINEERING LTD. JOB. 1273-05-04 DWGS. (001-307)

Comments: CS CURB STOP SDW WATER SERVICE TCH HYDRO SERVICE  
CO CLEAN OUT STORM SERVICE CABLE SERVICE  
SANITARY SERVICE TELECOMMUNICATIONS GAS GAS  
E ELECTRICAL

THE INFORMATION CONTAINED HEREIN IS FOR INTERNAL USE ONLY.  
NOT TO BE RELIED UPON UNLESS CONFIRMED BY THE SITE INSPECTION AND/OR INVESTIGATION



SANITARY, STORM & WATER SERVICE INVERTS	SANITARY	WATER	STORM
1. Distance from San. M.H. <u>5087</u> toward San. M.H. <u>5088</u> to lot service connection point is:	0m	N/A	N/A
1a.Distance from Stm. M.H. <u>3627</u> toward Stm. M.H. <u>3628</u> to lot service connection point is:	N/A	N/A	19m
2. Main Size at connection point is	200mmØ	250mmØ	250mmØ
3. Invert of main at conn. stub point is	723.54m	723.50m	723.37m
4. Invert at service end is	723.68m	723.65m	723.65m
5. Cover at property line in meters	3.25m	3.36m	3.28m
6. Survey Date: MAY 2010 Book Ref.: 1273-05-03 By: Pierre Dorion			

**SANITARY HISTORY:**

---

DATE INSTALLED: AUGUST 2009

---

INSTALLED BY: PROGRESSIVE CONTRACTORS LTD.

---



---



---



---



---



---



---



---



---

**WATER HISTORY:**

---

DATE INSTALLED: AUGUST 2009

---

INSTALLED BY: PROGRESSIVE CONTRACTORS LTD.

---



---



---



---



---



---



---



---



---

**STORM HISTORY:**

---

DATE INSTALLED: AUGUST 2009

---

INSTALLED BY: PROGRESSIVE CONTRACTORS LTD.

---



---



---



---



---



---



---



---



---