



# City of Prince George History Sheet

|        |           |
|--------|-----------|
| PID:   | 028078110 |
| SD/MU: |           |
| WO:    |           |

Civic Address: 999 Terminal Blvd

Legal Description: Lot: 3 District Lot: 745 Plan: BCP42634

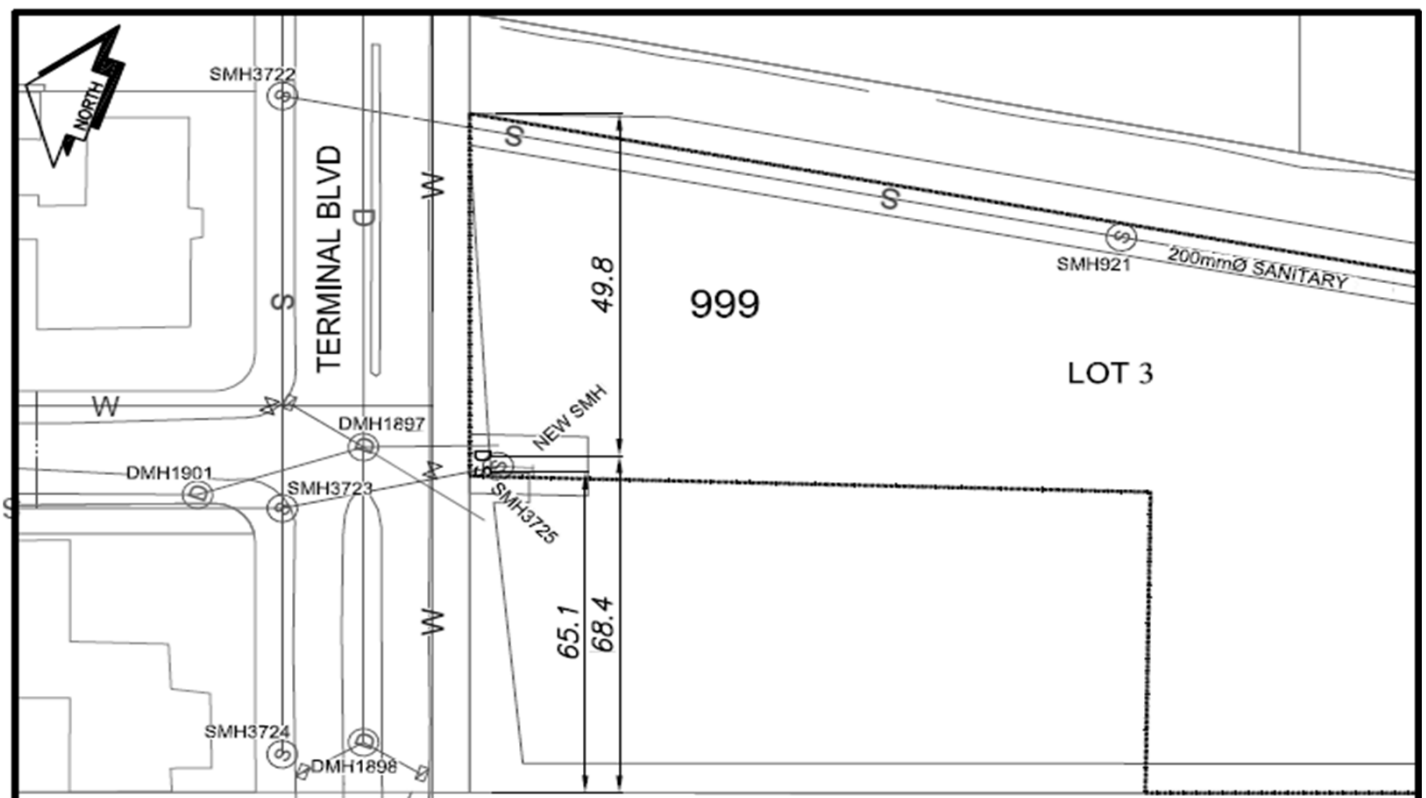
| Service Type | Diameter (mm) | Material | Invert Elev at MH (m) | Invert Elev at property line (m) | Invert Elev at service end (m) | Distance into property (m) | Installation Date |
|--------------|---------------|----------|-----------------------|----------------------------------|--------------------------------|----------------------------|-------------------|
| Sanitary     | 200mm         | AC       | 587.19                | 587.25                           | -                              | -                          | December 1978     |
| Water        | Unknown       | Unknown  | -                     | -                                | -                              | -                          |                   |
| Storm        | 300mm         | CMP      | 590.45                | -                                | -                              | -                          | December 1988     |

| Service Connection Location                    | Sanitary (m) | Storm (m) |
|--|--------------|-----------|
| 200mm Sanitary service connected to San MH3723 | -            |           |
| 300mm Storm service connected to stm Mh1897    |              |           |

| Power            | Size | Communications   | Size | Cable            | Size | Gas      | Size |
|------------------|------|------------------|------|------------------|------|----------|------|
| BC Hydro         | -    | Telus            | -    | Shaw             | -    | FortisBC | -    |
| Overhead Service |      | Overhead Service |      | Overhead Service |      |          |      |

|               |              |   |
|---------------|--------------|---|
| Installed by: | Survey Date: | - |
| Comments:     |              |   |
|               |              |   |
|               |              |   |

**NOT TO SCALE** The information contained herein is for internal use only.  
Not to be relied on unless confirmed by site inspection and/or investigation.



|    |             |           |                  |           |               |
|----|-------------|-----------|------------------|-----------|---------------|
| CS | CURB STOP   | W         | WATER SERVICE    | ○         | STORM SERVICE |
| CO | CLEAN OUT   | - - - - - | SANITARY SERVICE | -G-       | GAS           |
| W  | WATER VALVE | ⊗         | FIRE HYDRANT     | - - - - - | ENCUMBRANCE   |

**NOT TO SCALE**