



City of Prince George History Sheet

PID:	027983561
SD	100387
WO:	

Civic Address: 6333 Pacific Street

Legal Description: Lot: 2 District Lot: 747 Plan: BCP41328

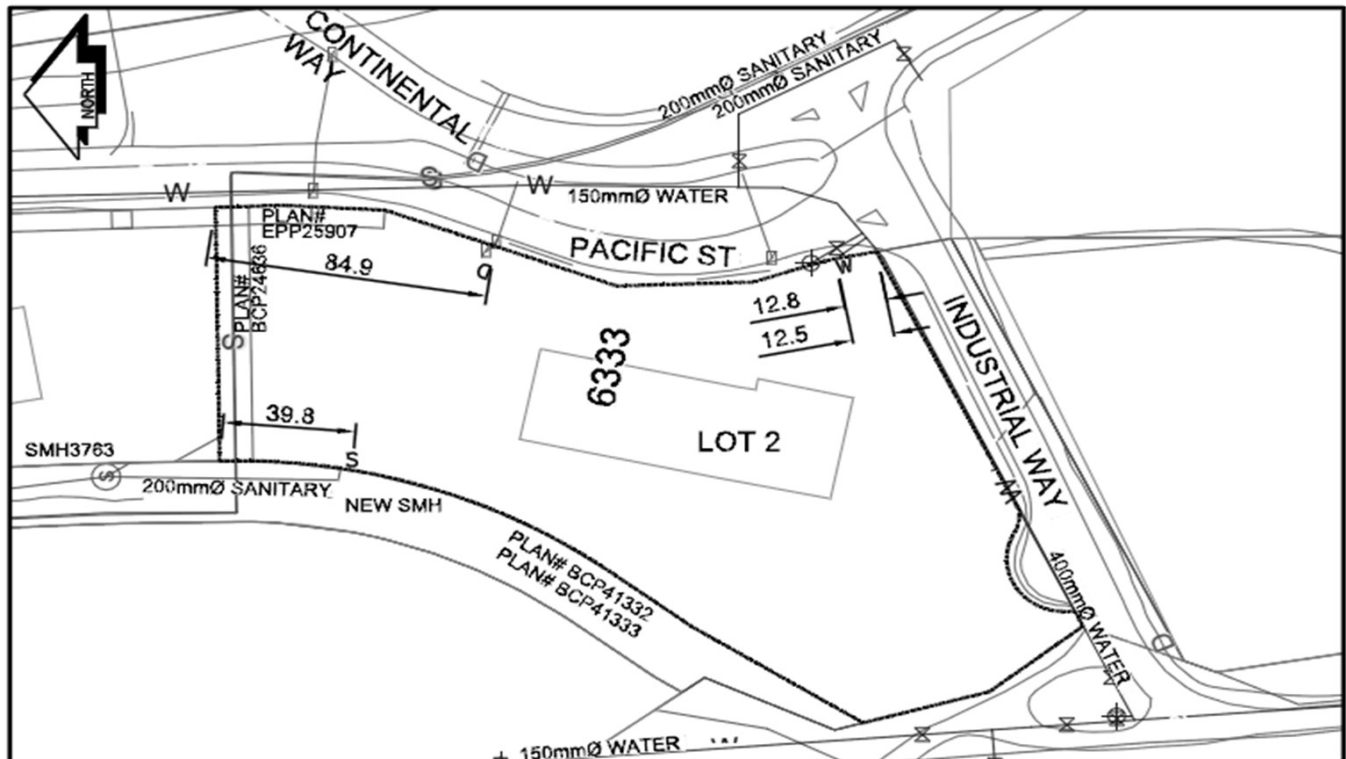
Service Type	Diameter (mm)	Material	Invert Elev at main (m)	Invert Elev at property line (m)	Invert Depth at service end (m)	Distance into property (m)	Installation Date
Sanitary	200mm	PVC	-	653.58	2.50	-	September 2006
Water	50mm	Copper	-	655.30	3.00	-	December 1981
Storm	450mm	PVC	-	321.83	2.50	-	September 2006

Service Connection Location	Sanitary (m)	Storm (m)
200mm Sanitary service connected to San MH in ROW	-	
Onsite CB connected to 450mm Storm culvert that runs under Pacific St and discharges to MoT ditch		

Power	Size	Communications	Size	Cable	Size	Gas	Size
BC Hydro	-	Telus	-	Shaw	-	FortisBC	-
Overhead Service		Underground Service		Unknown			

Installed by:	Survey Date:	-
Comments: Water and Sanitary service connections location as per UTOPS - September 2016		
Onsite CB popped under Pacific st to MoT ditch		

NOT TO SCALE The information contained herein is for internal use only.
Not to be relied on unless confirmed by site inspection and/or investigation.



CS CURB STOP	WATER SERVICE	STORM SERVICE
CO CLEAN OUT	SANITARY SERVICE	GAS
WATER VALVE	FIRE HYDRANT	ENCUMBRANCE

NOT TO SCALE