



City of Prince George History Sheet

PID:	027557481
MU:	100503
WO:	65200/ 65201

Civic Address: 2629 Vance Road

Legal Description: Lot: A District Lot: 753 Plan: BCP36526

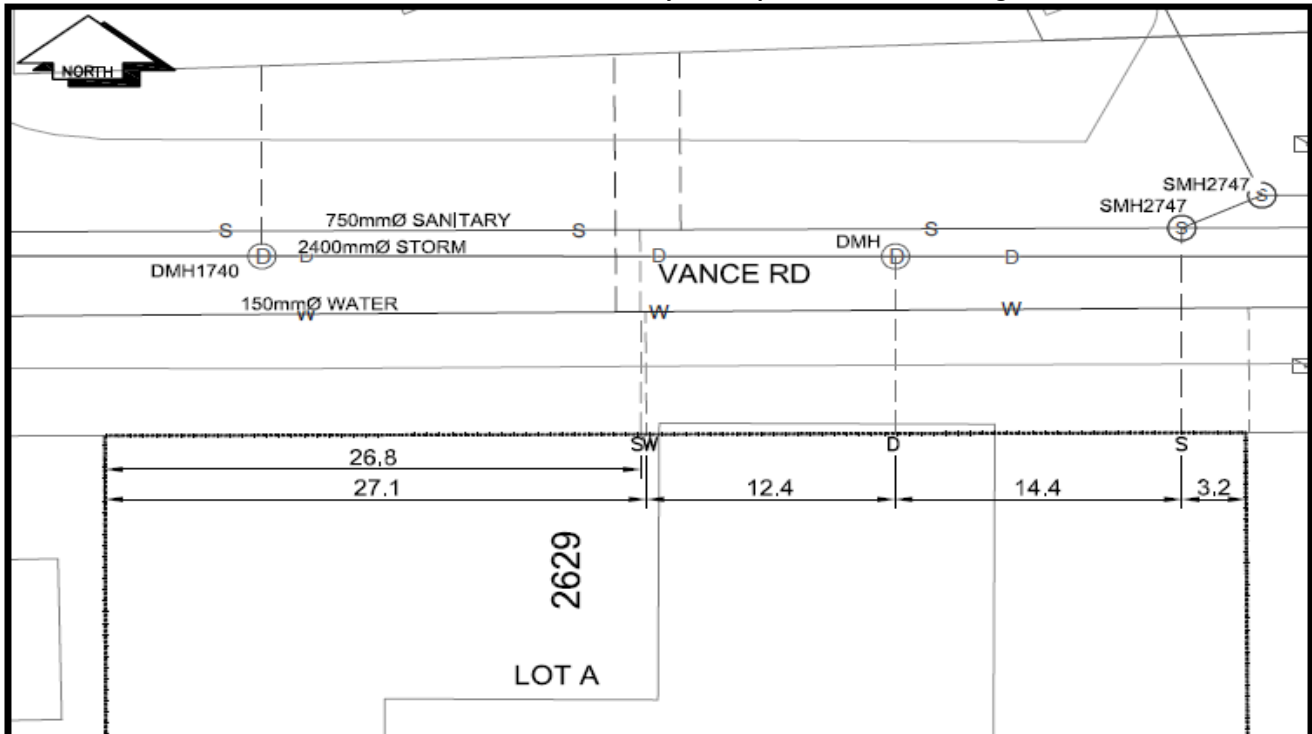
Service Type	Diameter (mm)	Material	Invert Elev at main (m)	Invert Elev at property line (m)	Invert Elev at service end (m)	Distance into property (m)	Installation Date
Sanitary (west)	100mm	AC	-	-	-	-	February 1993
Sanitary (east)	100mm	AC	-	-	-	-	February 1993
Water	40mm	Copper	-	-	-	-	February 1993
Storm	200mm	CMP	-	-	-	-	February 1993

Service Connection Location				Sanitary (m)	Storm (m)
Distance from downstream San MH	2747	towards upstream San MH	3590	27.10	
East 100mm Sanitary service connected to San MH 2747					
200mm Storm connected to Stm MH on Vance Rd					

Power	Size	Communications	Size	Cable	Size	Gas	Size
BC Hydro	-	Telus	-	Shaw	-	FortisBC	-
Underground Service		Underground Service		Underground Service			

Installed by:		Survey Date:	-
Comments:	As per located October 2016.		

NOT TO SCALE The information contained herein is for internal use only.
Not to be relied on unless confirmed by site inspection and/or investigation.



CS	CURB STOP	---	W	WATER SERVICE	---	D	STORM SERVICE
CO	CLEAN OUT	---	S	SANITARY SERVICE	---	G	GAS

NOT TO SCALE