

**City of Prince George**  
**HISTORY SHEET**

PID: 027542921

Scale: 1:500

Legal: LOT 41

D.L.: 1605

PLAN: BCP36464

Address: 8582 ST LAWRENCE AVE

Sanitary Connection:#	SIZE: 100mmØ	MATERIAL PVC	INV. 686.77m	CONNECTED
-----------------------	--------------	--------------	--------------	-----------

Water Connection:#	SIZE: 19mmØ	MATERIAL: COPPER	INV. 686.74m	
--------------------	-------------	------------------	--------------	--

Storm Connection:#	SIZE 100mmØ	MATERIAL PVC	INV. 686.75m	CONNECTED
--------------------	-------------	--------------	--------------	-----------

Cash Receipt No's:	WATER	SANITARY	STORM
--------------------	-------	----------	-------

CURB FROM PROPERTY LINE	6m	PAVEMENT WIDTH	13m
-------------------------	----	----------------	-----

B.C. HYDRO	75mm DB2	U/G CONNECTION	✓
------------	----------	----------------	---

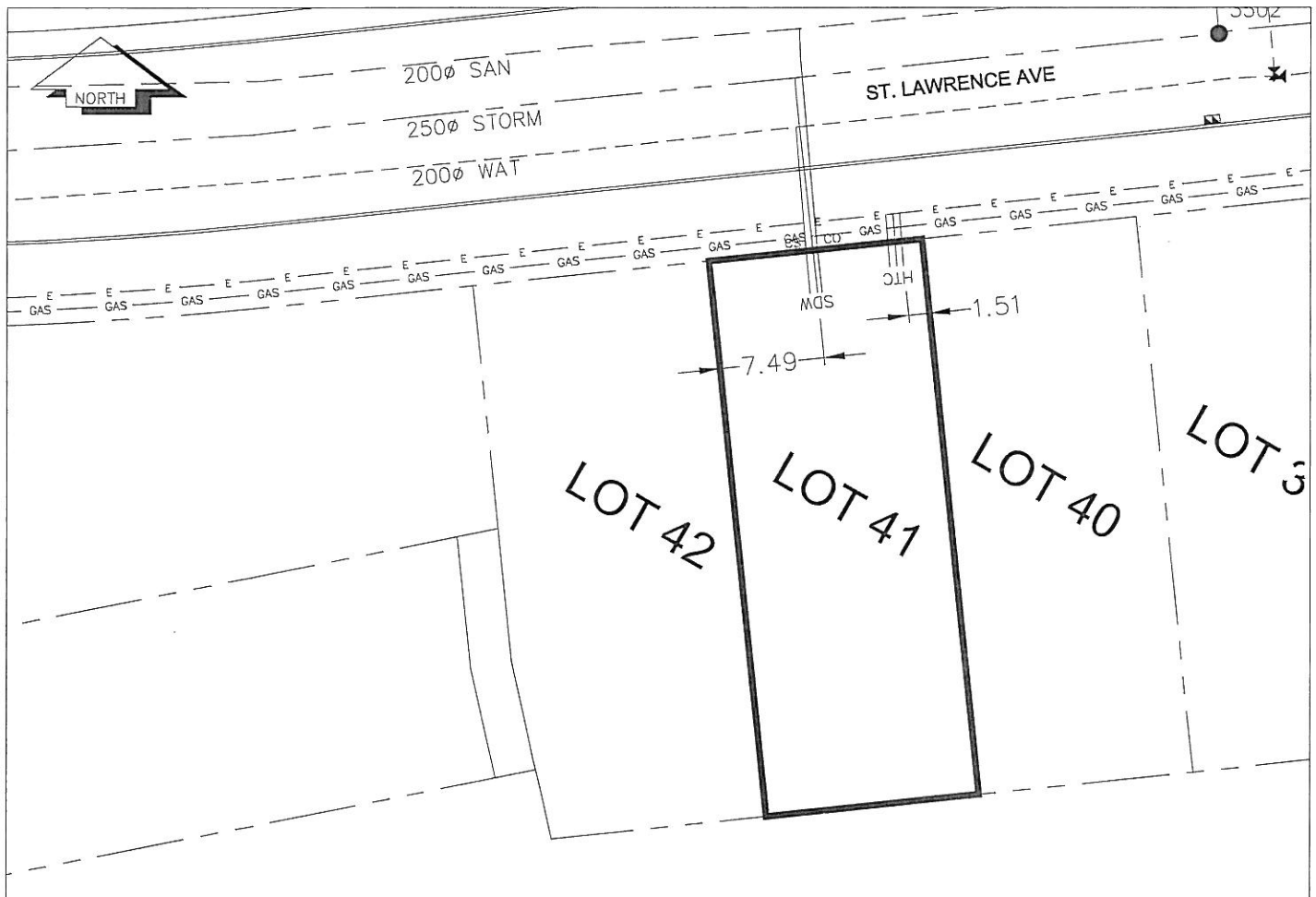
B.C. TELEPHONE	50mm DB2	U/G CONNECTION	✓
----------------	----------	----------------	---

B.C. GAS	42 PROP /P.E		
----------	--------------	--	--

Information Sheets: REF. DWGS. L&M ENGINEERING LTD. JOB. 1106-06-04 DWGS. (001-306)

Comments:	CS <sub>o</sub> CURB STOP	SDW	WATER SERVICE	TCH	HYDRO SERVICE	---	GAS	---	GAS
	CO CLEAN OUT	SDW	STORM SERVICE		CABLE SERVICE	---	E	---	ELECTRICAL
			SANITARY SERVICE		TELECOMMUNICATIONS				

THE INFORMATION CONTAINED HEREIN IS FOR INTERNAL USE ONLY.  
NOT TO BE RELIED UPON UNLESS CONFIRMED BY THE SITE INSPECTION AND/OR INVESTIGATION



SANITARY, STORM & WATER SERVICE INVERTS	SANITARY	WATER	STORM
1. Distance from San. M.H. 5001 toward San. M.H. 5004 to lot service connection point is:	26.5m	N/A	N/A
1a. Distance from Stm. M.H. 3502 toward Stm. M.H. 3504 to lot service connection point is:	N/A	N/A	30.5m
2. Main Size at connection point is	200mmØ	200mmØ	250mmØ
3. Invert of main at conn. stub pt is	683.83m	685.97m	685.10m
4. Invert at service end is	686.77m	686.85m	686.77m
5. Cover at P/L in meters	2.31m	2.44m	2.43m
6. Survey Date: NOV,04,07 Book Ref.: 1106-06-03 By: FORESIGHT			

**SANITARY HISTORY:**

DATE INSTALLED: AUGUST 2007

INSTALLED BY: WESTERN INDUSTRIAL CONTRACTORS LTD

**WATER HISTORY:**

DATE INSTALLED: AUGUST 2007

INSTALLED BY: WESTERN INDUSTRIAL CONTRACTORS LTD

**STORM HISTORY:**

DATE INSTALLED: AUGUST 2007

INSTALLED BY: WESTERN INDUSTRIAL CONTRACTORS LTD