

City of Prince George
HISTORY SHEET

PID: 027542912

Scale: 1:500

Legal: LOT 40

D.L.: 1605

PLAN: BCP36464

Address: 8574 ST LAWRENCE AVE

Sanitary Connection:#	SIZE: 100mmØ	MATERIAL: PVC	INV. 685.82m	CONNECTED
-----------------------	--------------	---------------	--------------	-----------

Water Connection:#	SIZE: 19mmØ	MATERIAL: COPPER	INV. 685.82m	
--------------------	-------------	------------------	--------------	--

Storm Connection:#	SIZE: 100mmØ	MATERIAL: PVC	INV. 685.83m	CONNECTED
--------------------	--------------	---------------	--------------	-----------

Cash Receipt No's:	WATER	SANITARY	STORM
--------------------	-------	----------	-------

CURB FROM PROPERTY LINE	6m	PAVEMENT WIDTH	13m
-------------------------	----	----------------	-----

B.C. HYDRO	75mm DB2	U/G CONNECTION	✓
------------	----------	----------------	---

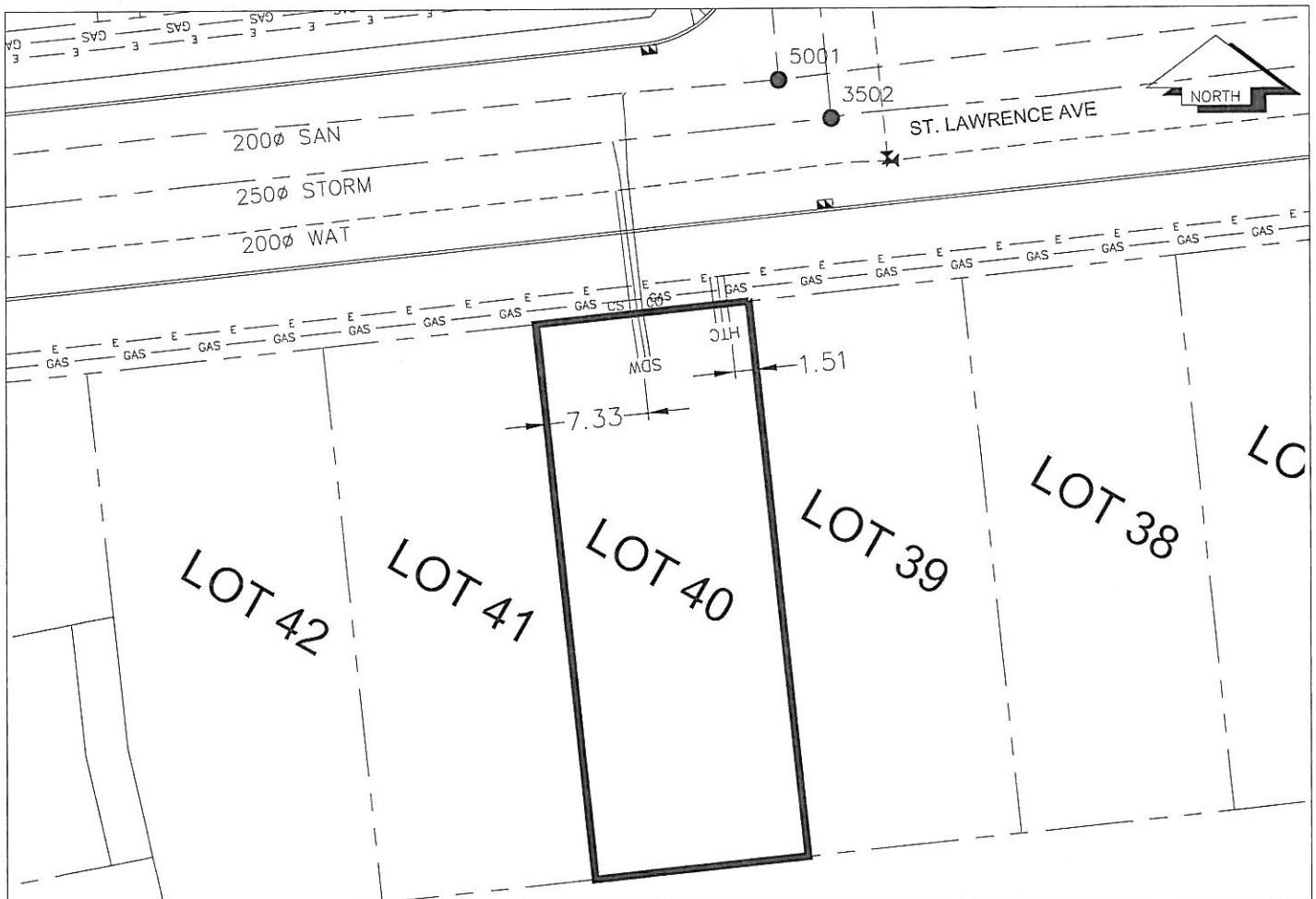
B.C. TELEPHONE	50mm DB2	U/G CONNECTION	✓
----------------	----------	----------------	---

B.C. GAS	42 PROP /P.E
----------	--------------

Information Sheets: REF. DWGS. L&M ENGINEERING LTD. JOB. 1106-06-04 DWGS. (001-306)

Comments:	CS CURB STOP CO CLEAN OUT	SDS WATER SERVICE STORM SERVICE SANITARY SERVICE	TCH HYDRO SERVICE CABLE SERVICE TELECOMMUNICATIONS	GAS ELECTRICAL
-----------	------------------------------	---	---	-------------------

THE INFORMATION CONTAINED HEREIN IS FOR INTERNAL USE ONLY.
NOT TO BE RELIED UPON UNLESS CONFIRMED BY THE SITE INSPECTION AND/OR INVESTIGATION



SANITARY, STORM & WATER SERVICE INVERTS	SANITARY	WATER	STORM
1. Distance from San. M.H. 5001 toward San. M.H. 5004 to lot service connection point is:	11m	N/A	N/A
1a. Distance from Stm. M.H. 3502 toward Stm. M.H. 3504 to lot service connection point is:	N/A	N/A	15m
2. Main Size at connection point is	200mmØ	200mmØ	250mmØ
3. Invert of main at conn. stub pt is	683.00m	684.99m	684.12m
4. Invert at service end is	685.82m	685.82m	685.83m
5. Cover at P/L in meters	2.22m	2.32m	2.21m
6. Survey Date: NOV,04,07 Book Ref.: 1106-06-03 By: FORESIGHT			

SANITARY HISTORY:

DATE INSTALLED: AUGUST 2007

INSTALLED BY: WESTERN INDUSTRIAL CONTRACTORS LTD

WATER HISTORY:

DATE INSTALLED: AUGUST 2007

INSTALLED BY: WESTERN INDUSTRIAL CONTRACTORS LTD

STORM HISTORY:

DATE INSTALLED: AUGUST 2007

INSTALLED BY: WESTERN INDUSTRIAL CONTRACTORS LTD