

City of Prince George
HISTORY SHEET

PID: 027542904

Scale: 1:500

Legal: LOT 39

D.L.: 1605

PLAN: BCP36464

Address: 8566 ST LAWRENCE AVE

Sanitary Connection:#	SIZE: 100mmØ	MATERIAL PVC	INV. 684.71m	CONNECTED
-----------------------	--------------	--------------	--------------	-----------

Water Connection:#	SIZE: 19mmØ	MATERIAL: COPPER	INV. 684.81m	
--------------------	-------------	------------------	--------------	--

Storm Connection:#	SIZE 100mmØ	MATERIAL PVC	INV. 684.71m	CONNECTED
--------------------	-------------	--------------	--------------	-----------

Cash Receipt No's:	WATER	SANITARY	STORM
--------------------	-------	----------	-------

CURB FROM PROPERTY LINE 6m	PAVEMENT WIDTH 13m
----------------------------	--------------------

B.C. HYDRO 75mm DB2	U/G CONNECTION ✓
---------------------	------------------

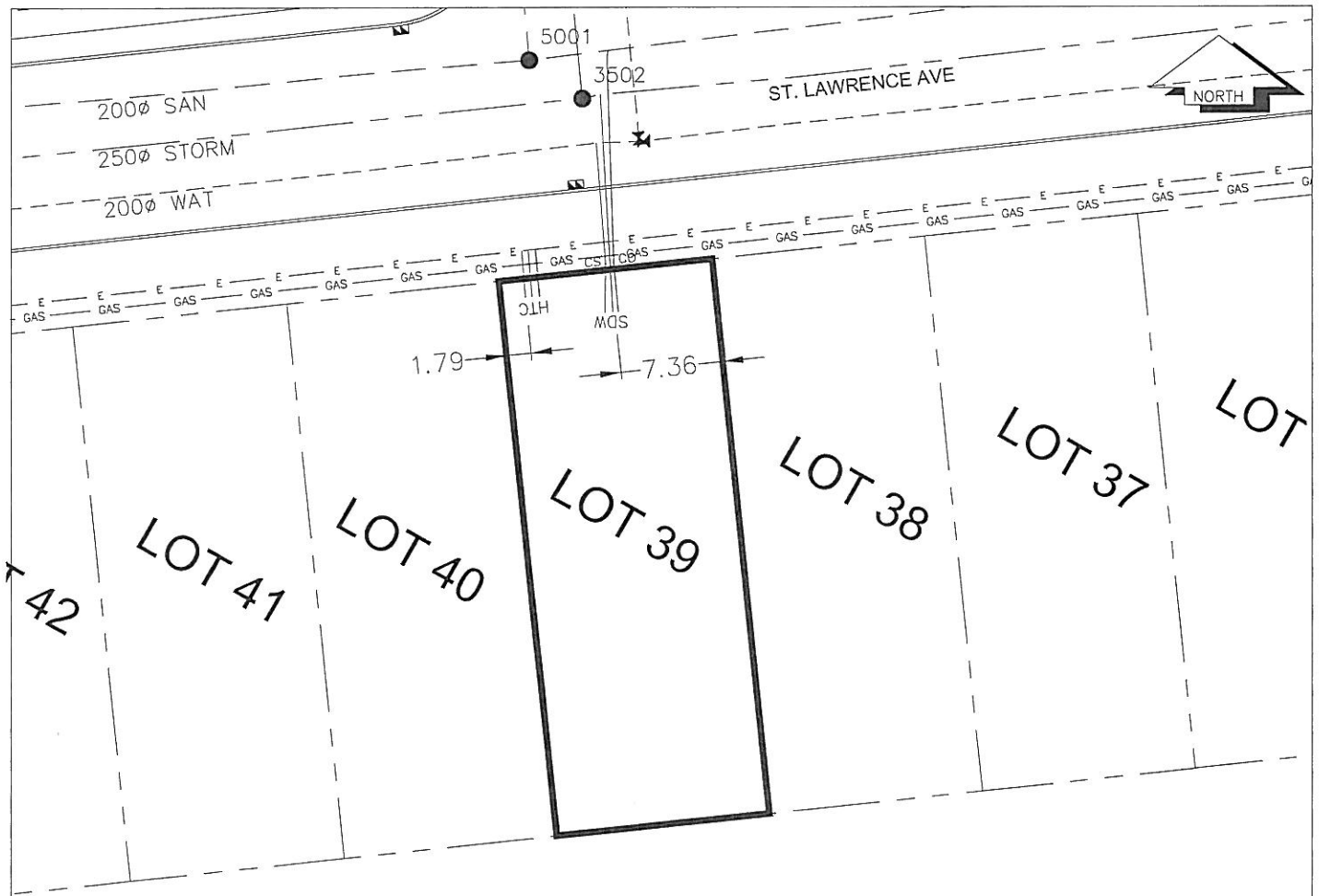
B.C. TELEPHONE 50mm DB2	U/G CONNECTION ✓
-------------------------	------------------

B.C. GAS 42 PROP /P.E	
-----------------------	--

Information Sheets: REF. DWGS. L&M ENGINEERING LTD. JOB. 1106-06-04 DWGS. (001-306)

Comments:	CS _o CURB STOP CO CLEAN OUT	SDW WATER SERVICE SDW STORM SERVICE SDW SANITARY SERVICE	TCH HYDRO SERVICE TCH CABLE SERVICE TCH TELECOMMUNICATIONS	GAS GAS E ELECTRICAL
-----------	---	--	--	-------------------------

THE INFORMATION CONTAINED HEREIN IS FOR INTERNAL USE ONLY.
NOT TO BE RELIED UPON UNLESS CONFIRMED BY THE SITE INSPECTION AND/OR INVESTIGATION



SANITARY, STORM & WATER SERVICE INVERTS	SANITARY	WATER	STORM
1. Distance from San. M.H. 5001 toward San. M.H. 5000 to lot service connection point is:	35m	N/A	N/A
1a.Distance from Stm. M.H. 3502 toward Stm. M.H. 3500 to lot service connection point is:	N/A	N/A	30
2. Main Size at connection point is	200mmØ	200mmØ	250mmØ
3. Invert of main at conn. stub pt is	682.13m	683.94m	683.01m
4. Invert at service end is	684.71m	684.74m	684.71m
5. Cover at P/L in meters	2.32m	2.39m	2.32m
6. Survey Date: NOV,04,07 Book Ref.: 1106-06-03 By: FORESIGHT			

SANITARY HISTORY:

DATE INSTALLED: AUGUST 2007

INSTALLED BY: WESTERN INDUSTRIAL CONTRACTORS LTD

WATER HISTORY:

DATE INSTALLED: AUGUST 2007

INSTALLED BY: WESTERN INDUSTRIAL CONTRACTORS LTD

STORM HISTORY:

DATE INSTALLED: AUGUST 2007

INSTALLED BY: WESTERN INDUSTRIAL CONTRACTORS LTD