

**City of Prince George**  
**HISTORY SHEET**

PID: 027542858

Scale: 1:500

Legal: LOT 34

D.L.: 1605

PLAN: BCP36464

Address: 8526 ST LAWRENCE AVE

Sanitary Connection:#	SIZE: 100mmØ	MATERIAL PVC	INV. 679.56m	CONNECTED
-----------------------	--------------	--------------	--------------	-----------

Water Connection:#	SIZE: 19mmØ	MATERIAL: COPPER	INV. 679.52m	
--------------------	-------------	------------------	--------------	--

Storm Connection:#	SIZE 100mmØ	MATERIAL PVC	INV. 679.57m	CONNECTED
--------------------	-------------	--------------	--------------	-----------

Cash Receipt No's:	WATER	SANITARY	STORM
--------------------	-------	----------	-------

CURB FROM PROPERTY LINE	6m	PAVEMENT WIDTH	13m
-------------------------	----	----------------	-----

B.C. HYDRO	75mm DB2	U/G CONNECTION	✓
------------	----------	----------------	---

B.C. TELEPHONE	50mm DB2	U/G CONNECTION	✓
----------------	----------	----------------	---

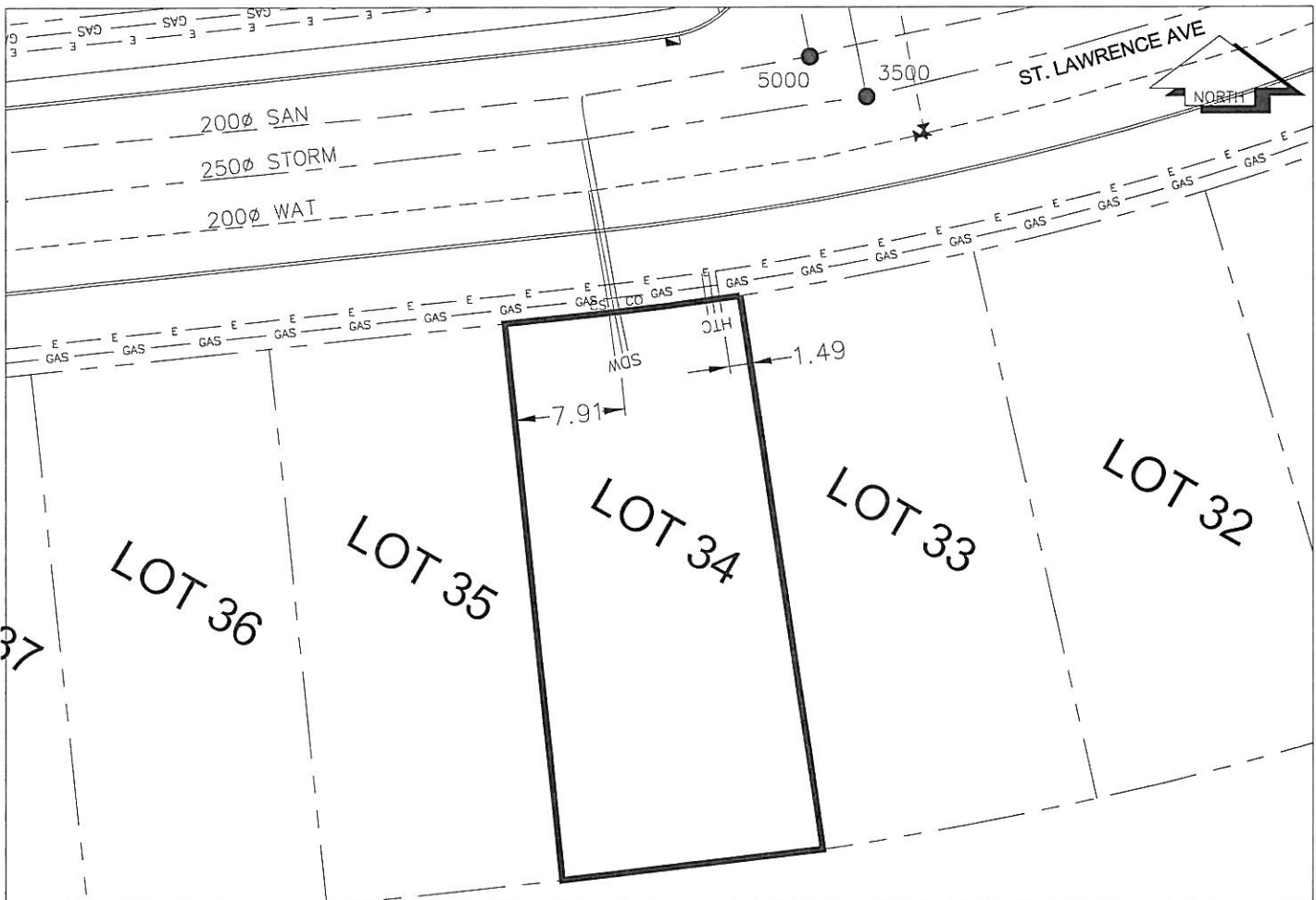
B.C. GAS	42 PROP /P.E
----------	--------------

Information Sheets: REF. DWGS. L&M ENGINEERING LTD. JOB. 1106-06-04 DWGS. (001-306)

Comments:	CS CURB STOP CO CLEAN OUT	SDW WATER SERVICE STORM SERVICE SANITARY SERVICE	TCH HYDRO SERVICE CABLE SERVICE TELECOMMUNICATIONS	GAS GAS E ELECTRICAL
-----------	------------------------------	--	--	-------------------------

THE INFORMATION CONTAINED HEREIN IS FOR INTERNAL USE ONLY.

NOT TO BE RELIED UPON UNLESS CONFIRMED BY THE SITE INSPECTION AND/OR INVESTIGATION



SANITARY, STORM & WATER SERVICE INVERTS	SANITARY	WATER	STORM
1. Distance from San. M.H. 5000 toward San. M.H. 5001 to lot service connection point is:	16m	N/A	N/A
1a.Distance from Stm. M.H. 3500 toward Stm. M.H. 3502 to lot service connection point is:	N/A	N/A	21m
2. Main Size at connection point is	200mmØ	200mmØ	250mmØ
3. Invert of main at conn. stub pt is	678.18m	678.89m	677.75m
4. Invert at service end is	679.56m	679.52m	679.57m
5. Cover at P/L in meters	2.56m	2.7m	2.55m
6. Survey Date: NOV,14,07 Book Ref.: 1106-06-03 By: FORESIGHT			

#### SANITARY HISTORY:

DATE INSTALLED: AUGUST 2007

INSTALLED BY: WESTERN INDUSTRIAL CONTRACTORS LTD

#### WATER HISTORY:

DATE INSTALLED: AUGUST 2007

INSTALLED BY: WESTERN INDUSTRIAL CONTRACTORS LTD

#### STORM HISTORY:

DATE INSTALLED: AUGUST 2007

INSTALLED BY: WESTERN INDUSTRIAL CONTRACTORS LTD