

City of Prince George
HISTORY SHEET

PID: 027542840

Scale: 1:500

Legal: LOT 33

D.L.: 1605

PLAN: BCP36464

Address: 8518 ST LAWRENCE AVE

Sanitary Connection:#	SIZE: 100mmØ	MATERIAL PVC	INV. 678.44m	CONNECTED
-----------------------	--------------	--------------	--------------	-----------

Water Connection:#	SIZE: 19mmØ	MATERIAL: COPPER	INV. 678.43m	
--------------------	-------------	------------------	--------------	--

Storm Connection:#	SIZE 100mmØ	MATERIAL PVC	INV. 678.53m	CONNECTED
--------------------	-------------	--------------	--------------	-----------

Cash Receipt No's:	WATER	SANITARY	STORM
--------------------	-------	----------	-------

CURB FROM PROPERTY LINE	6m	PAVEMENT WIDTH	13m
-------------------------	----	----------------	-----

B.C. HYDRO	75mm DB2	U/G CONNECTION	✓
------------	----------	----------------	---

B.C. TELEPHONE	50mm DB2	U/G CONNECTION	✓
----------------	----------	----------------	---

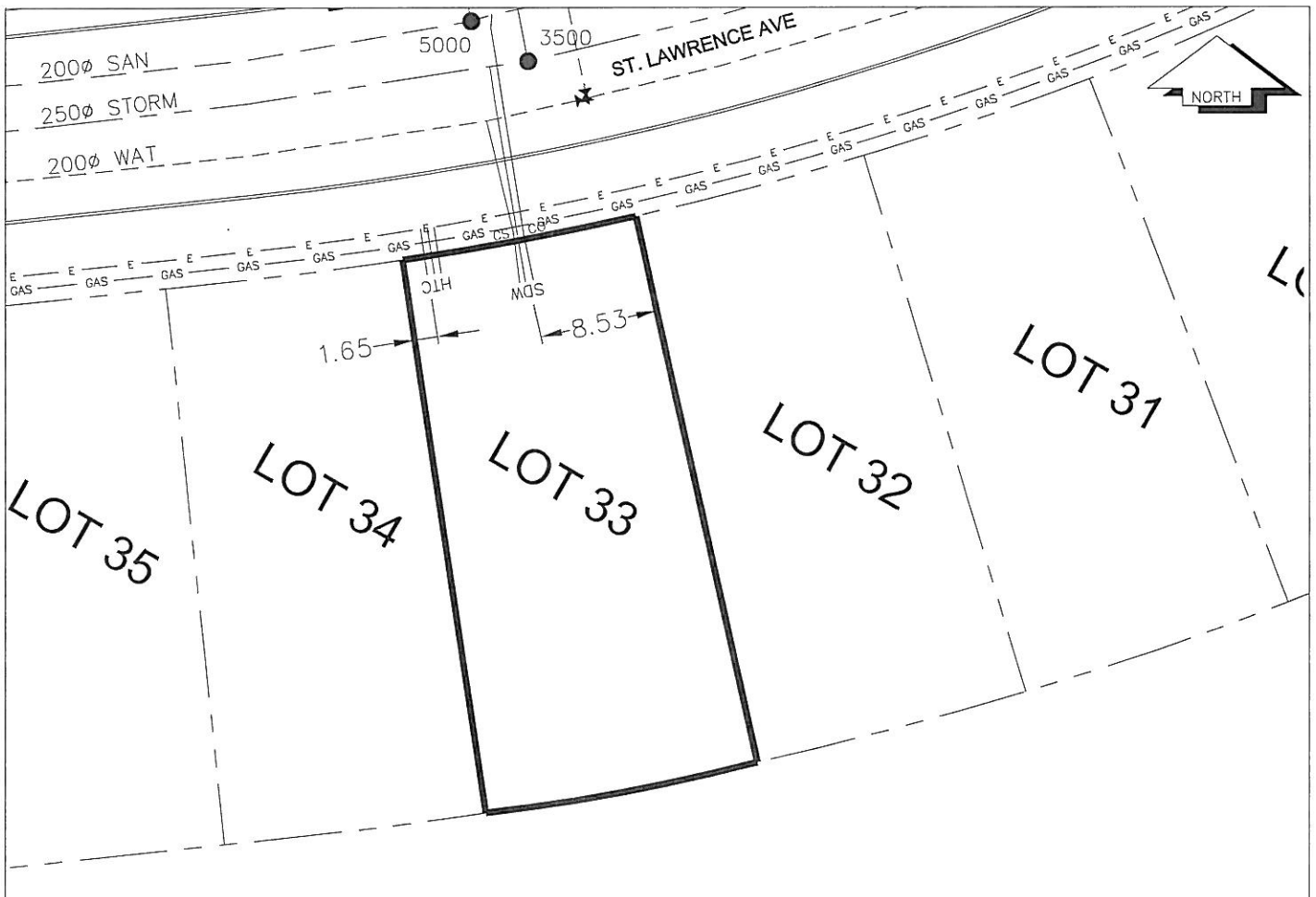
B.C. GAS	42 PROP /P.E		
----------	--------------	--	--

Information Sheets: REF. DWGS. L&M ENGINEERING LTD. JOB. 1106-06-04 DWGS. (001-306)

Comments:	CS CURB STOP	SDW WATER SERVICE	TCH HYDRO SERVICE	— GAS — GAS
	CO CLEAN OUT	SDW STORM SERVICE	TCH CABLE SERVICE	— E — ELECTRICAL
		SDW SANITARY SERVICE	TCH TELECOMMUNICATIONS	

THE INFORMATION CONTAINED HEREIN IS FOR INTERNAL USE ONLY.

NOT TO BE RELIED UPON UNLESS CONFIRMED BY THE SITE INSPECTION AND/OR INVESTIGATION



SANITARY, STORM & WATER SERVICE INVERTS	SANITARY	WATER	STORM
1. Distance from San. M.H. 5000 toward San. M.H. 4454 to lot service connection point is:	1.5m	N/A	N/A
1a. Distance from Stm. M.H. 3500 toward Stm. M.H. 3502 to lot service connection point is:	N/A	N/A	3m
2. Main Size at connection point is	200mmØ	200mmØ	250mmØ
3. Invert of main at conn. stub pt is	677.30m	677.82m	676.57m
4. Invert at service end is	678.44m	678.43m	678.53m
5. Cover at P/L in meters	2.64m	2.75m	2.55m
6. Survey Date: NOV,14,07 Book Ref.: 1106-06-03 By: FORESIGHT			

SANITARY HISTORY:

DATE INSTALLED: AUGUST 2007

INSTALLED BY: WESTERN INDUSTRIAL CONTRACTORS LTD

WATER HISTORY:

DATE INSTALLED: AUGUST 2007

INSTALLED BY: WESTERN INDUSTRIAL CONTRACTORS LTD

STORM HISTORY:

DATE INSTALLED: AUGUST 2007

INSTALLED BY: WESTERN INDUSTRIAL CONTRACTORS LTD