

City of Prince George
HISTORY SHEET

PID: 027542831

Scale: 1:500

Legal: LOT 32

D.L.: 1605

PLAN: BCP36464

Address: 8510 ST LAWRENCE AVE

Sanitary Connection:#	SIZE:	100mmØ	MATERIAL	PVC	INV.	677.47m	CONNECTED
-----------------------	-------	--------	----------	-----	------	---------	-----------

Water Connection:#	SIZE:	19mmØ	MATERIAL:	COPPER	INV.	677.43m
--------------------	-------	-------	-----------	--------	------	---------

Storm Connection:#	SIZE	100mmØ	MATERIAL	PVC	INV.	677.45m	CONNECTED
--------------------	------	--------	----------	-----	------	---------	-----------

Cash Receipt No's:	WATER	SANITARY	STORM
--------------------	-------	----------	-------

CURB FROM PROPERTY LINE	6m	PAVEMENT WIDTH	13m
-------------------------	----	----------------	-----

B.C. HYDRO	75mm DB2	U/G CONNECTION	✓
------------	----------	----------------	---

B.C. TELEPHONE	50mm DB2	U/G CONNECTION	✓
----------------	----------	----------------	---

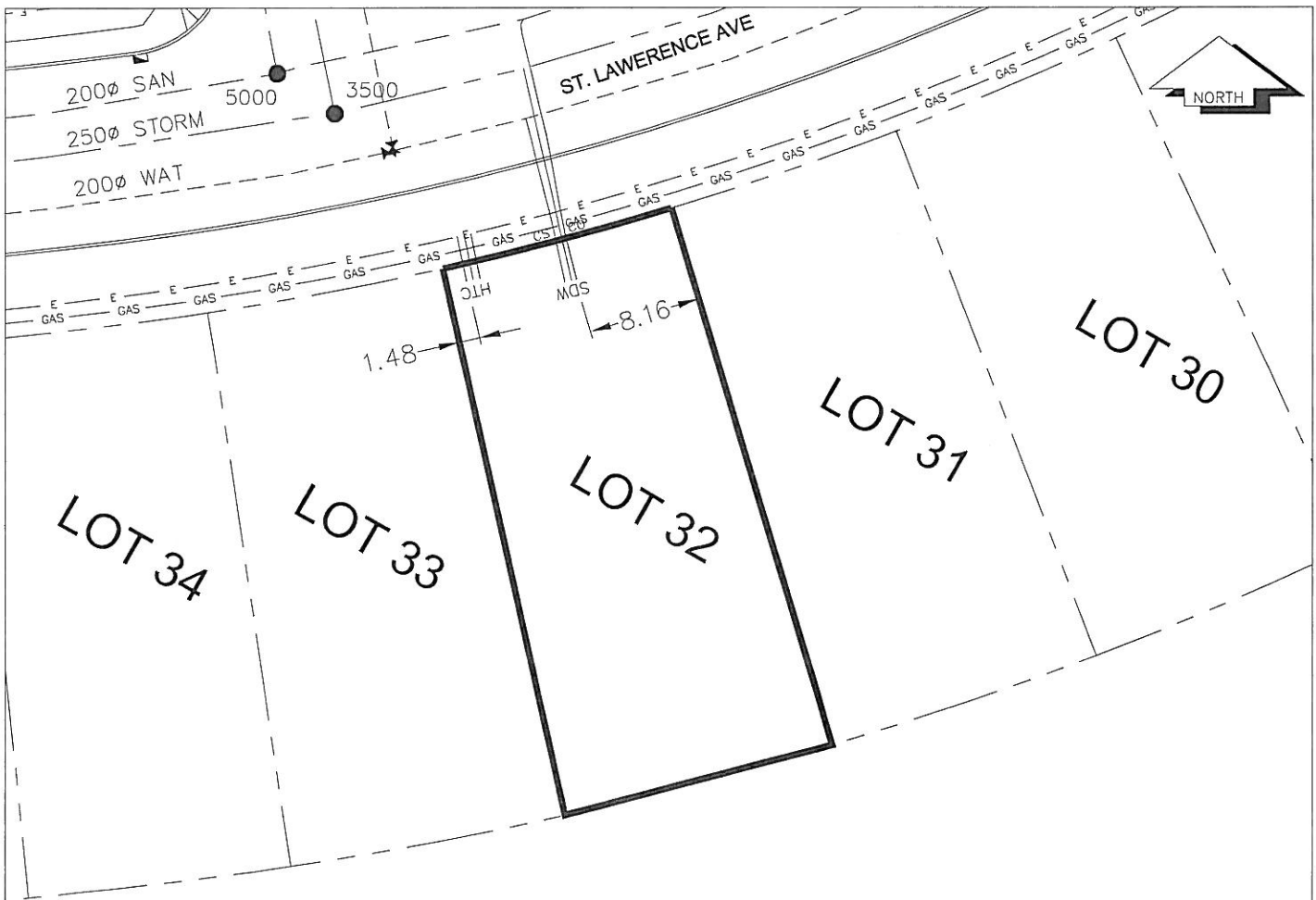
B.C. GAS	42 PROP /P.E
----------	--------------

Information Sheets: REF. DWGS. L&M ENGINEERING LTD. JOB. 1106-06-04 DWGS. (001-306)

Comments:	CS CURB STOP CO CLEAN OUT	SDW WATER SERVICE SDW STORM SERVICE SDW SANITARY SERVICE	TCH HYDRO SERVICE TCH CABLE SERVICE TCH TELECOMMUNICATIONS	GAS GAS E ELECTRICAL
-----------	------------------------------	--	--	-------------------------

THE INFORMATION CONTAINED HEREIN IS FOR INTERNAL USE ONLY.

NOT TO BE RELIED UPON UNLESS CONFIRMED BY THE SITE INSPECTION AND/OR INVESTIGATION



SANITARY, STORM & WATER SERVICE INVERTS	SANITARY	WATER	STORM
1. Distance from San. M.H. 5000 toward San. M.H. 4454 to lot service connection point is:	18m	N/A	N/A
1a.Distance from Stm. M.H. 3500 toward Stm. M.H. 3499 to lot service connection point is:	N/A	N/A	13m
2. Main Size at connection point is	200mmØ	200mmØ	250mmØ
3. Invert of main at conn. stub pt is	676.19m	676.70m	677.00m
4. Invert at service end is	677.47m	677.43m	677.45m
5. Cover at P/L in meters	2.50m	2.64m	2.52m
6. Survey Date: NOV,14,07 Book Ref.: 1106-06-03 By: FORESIGHT			

SANITARY HISTORY:

DATE INSTALLED: AUGUST 2007

INSTALLED BY: WESTERN INDUSTRIAL CONTRACTORS LTD

WATER HISTORY:

DATE INSTALLED: AUGUST 2007

INSTALLED BY: WESTERN INDUSTRIAL CONTRACTORS LTD

STORM HISTORY:

DATE INSTALLED: AUGUST 2007

INSTALLED BY: WESTERN INDUSTRIAL CONTRACTORS LTD