

City of Prince George
HISTORY SHEET

PID: 027542793

Scale: 1:500

Legal: LOT 28

D.L.: 1605

PLAN: BCP36464

Address: 7622 ST ANDREW COURT

Sanitary Connection:#	SIZE: 100mmØ	MATERIAL PVC	INV. 678.40m	CONNECTED
-----------------------	--------------	--------------	--------------	-----------

Water Connection:#	SIZE: 19mmØ	MATERIAL: COPPER	INV. 678.39m	
--------------------	-------------	------------------	--------------	--

Storm Connection:#	SIZE 100mmØ	MATERIAL PVC	INV. 678.41m	CONNECTED
--------------------	-------------	--------------	--------------	-----------

Cash Receipt No's:	WATER	SANITARY	STORM
--------------------	-------	----------	-------

CURB FROM PROPERTY LINE	5m	PAVEMENT WIDTH	10m
-------------------------	----	----------------	-----

B.C. HYDRO	75mm DB2	U/G CONNECTION	✓
------------	----------	----------------	---

B.C. TELEPHONE	50mm DB2	U/G CONNECTION	✓
----------------	----------	----------------	---

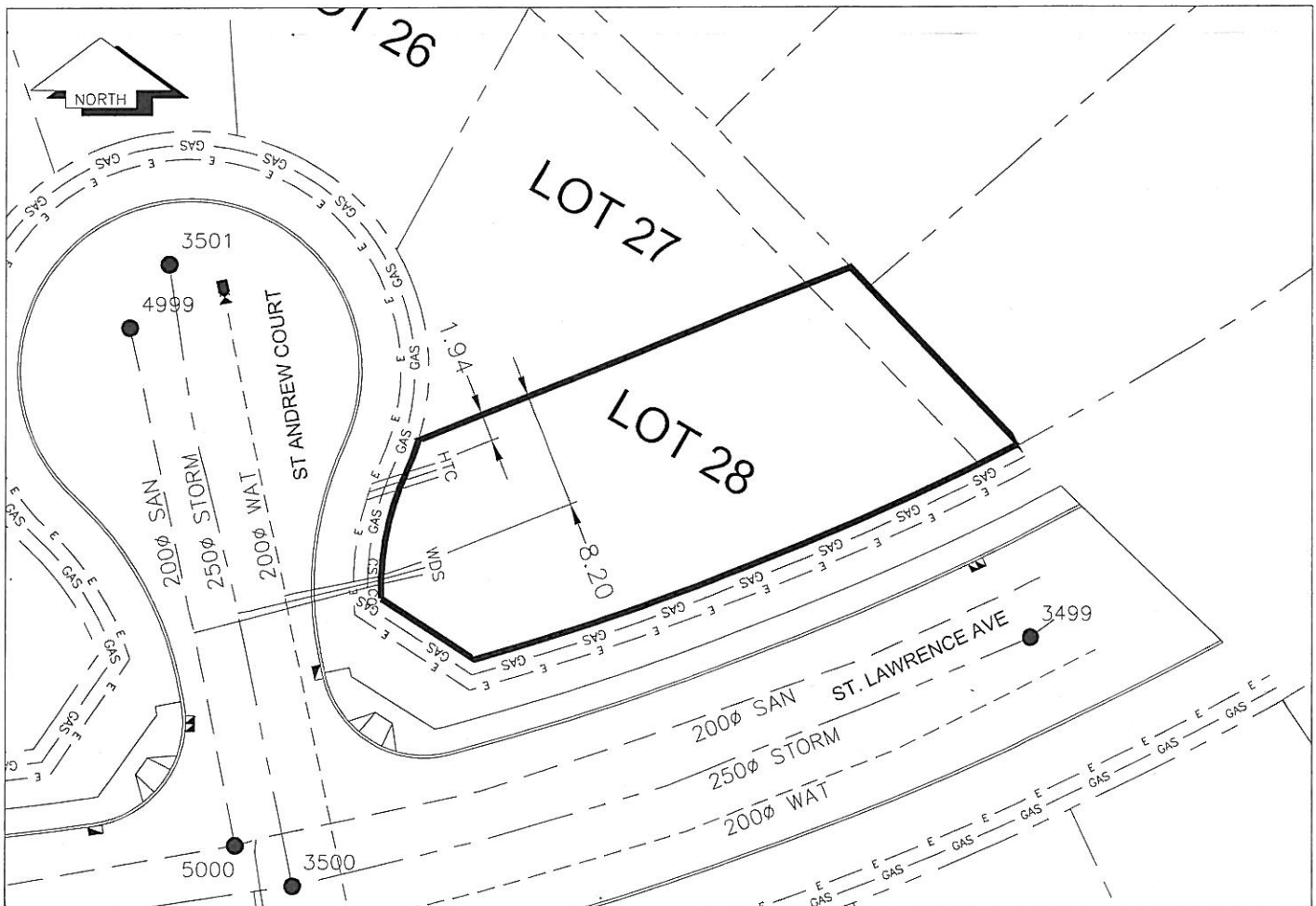
B.C. GAS	42 PROP /P.E		
----------	--------------	--	--

Information Sheets: REF. DWGS. L&M ENGINEERING LTD. JOB. 1106-06-04 DWGS. (001-306)

Comments:	CS CURB STOP	SDW WATER SERVICE	TCH HYDRO SERVICE	GAS GAS
	CO CLEAN OUT			
		SDW SANITARY SERVICE	TCH TELECOMMUNICATIONS	

THE INFORMATION CONTAINED HEREIN IS FOR INTERNAL USE ONLY.

NOT TO BE RELIED UPON UNLESS CONFIRMED BY THE SITE INSPECTION AND/OR INVESTIGATION



SANITARY, STORM & WATER SERVICE INVERTS	SANITARY	WATER	STORM
1. Distance from San. M.H. 5000 toward San. M.H. 4999 to lot service connection point is:	15m	N/A	N/A
1a. Distance from Stm. M.H. 3500 toward Stm. M.H. 3501 to lot service connection point is:	N/A	N/A	19m
2. Main Size at connection point is	200mmØ	200mmØ	250mmØ
3. Invert of main at conn. stub pt is	678.08m	677.72m	677.55m
4. Invert at service end is	678.40m	678.39m	678.41m
5. Cover at P/L in meters	2.03m	2.37m	2.01m
6. Survey Date: NOV,14,07 Book Ref.: 1106-06-03 By: FORESIGHT			

SANITARY HISTORY:

DATE INSTALLED: AUGUST 2007

INSTALLED BY: WESTERN INDUSTRIAL CONTRACTORS LTD

WATER HISTORY:

DATE INSTALLED: AUGUST 2007

INSTALLED BY: WESTERN INDUSTRIAL CONTRACTORS LTD

STORM HISTORY:

DATE INSTALLED: AUGUST 2007

INSTALLED BY: WESTERN INDUSTRIAL CONTRACTORS LTD