

City of Prince George
HISTORY SHEET

PID: 027542785

Scale: 1:500

Legal: LOT 27

D.L.: 1605

PLAN: BCP36464

Address: 7614 ST ANDREW COURT

Sanitary Connection:# SIZE: 100mmØ MATERIAL: PVC INV. 678.99m CONNECTED

Water Connection:# SIZE: 19mmØ MATERIAL: COPPER INV. 678.91m

Storm Connection:# SIZE: 100mmØ MATERIAL: PVC INV. 679.14m CONNECTED

Cash Receipt No's: WATER SANITARY STORM

CURB FROM PROPERTY LINE 5m PAVEMENT WIDTH 10m

B.C. HYDRO 75mm DB2 U/G CONNECTION ✓

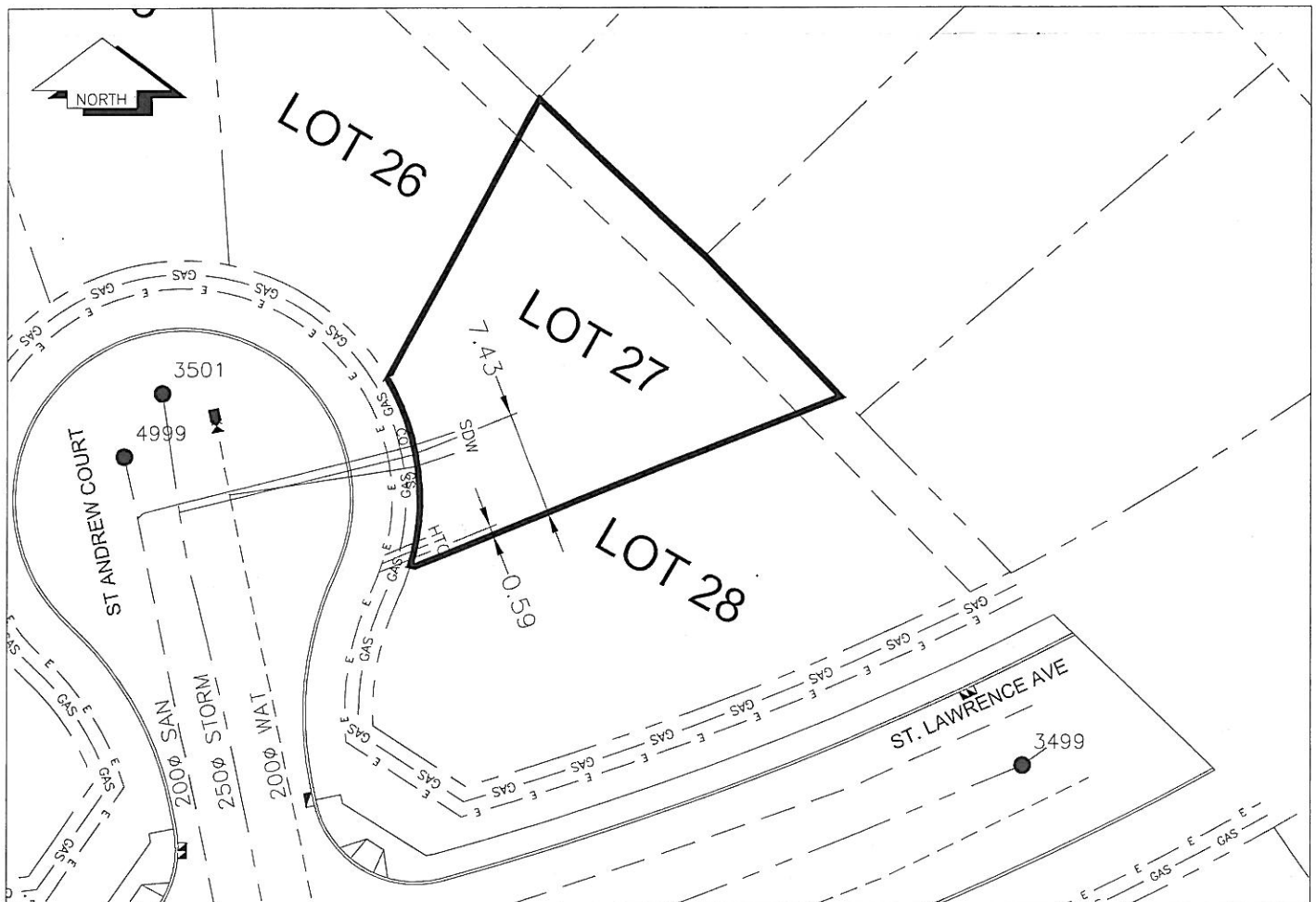
B.C. TELEPHONE 50mm DB2 U/G CONNECTION ✓

B.C. GAS 42 PROP /P.E

Information Sheets: REF. DWGS. L&M ENGINEERING LTD. JOB. 1106-06-04 DWGS. (001-306)

Comments: CS CURB STOP SDW WATER SERVICE TCH HYDRO SERVICE GAS GAS
CO CLEAN OUT SANITARY SERVICE CABLE SERVICE TELECOMMUNICATIONS E ELECTRICAL

THE INFORMATION CONTAINED HEREIN IS FOR INTERNAL USE ONLY.
NOT TO BE RELIED UPON UNLESS CONFIRMED BY THE SITE INSPECTION AND/OR INVESTIGATION



SANITARY, STORM & WATER SERVICE INVERTS

	SANITARY	WATER	STORM
1. Distance from San. M.H. 5000 toward San. M.H. 4999 to lot service connection point is:	33m	N/A	N/A
1a. Distance from Slm. M.H. 3500 toward Slm. M.H. 3501 to lot service connection point is:	N/A	N/A	36m
2. Main Size at connection point is	200mmØ	200mmØ	250mmØ
3. Invert of main at conn. stub pt is	678.70m	678.00m	678.32m
4. Invert at service end is	678.99m	679.91m	679.14m
5. Cover at P/L in meters	2.13m	2.37m	2.01m
6. Survey Date: NOV,14,07 Book Ref.: 1106-06-03 By: FORESIGHT			

SANITARY HISTORY:

DATE INSTALLED: AUGUST 2007

INSTALLED BY: WESTERN INDUSTRIAL CONTRACTORS LTD

WATER HISTORY:

DATE INSTALLED: AUGUST 2007

INSTALLED BY: WESTERN INDUSTRIAL CONTRACTORS LTD

STORM HISTORY:

DATE INSTALLED: AUGUST 2007

INSTALLED BY: WESTERN INDUSTRIAL CONTRACTORS LTD