

City of Prince George
HISTORY SHEET

PID: 027542751

Scale: 1:500

Legal: LOT 24

D.L.: 1605

PLAN: BCP36464

Address: 7611 ST ANDREW COURT

Sanitary Connection:# SIZE: 100mmØ MATERIAL PVC INV. 679.27m CONNECTED

Water Connection:# SIZE: 19mmØ MATERIAL: COPPER INV. 679.20m

Storm Connection:# SIZE 100mmØ MATERIAL PVC INV. 679.22m CONNECTED

Cash Receipt No's: WATER SANITARY STORM

CURB FROM PROPERTY LINE 5m PAVEMENT WIDTH 10m

B.C. HYDRO 75mm DB2 U/G CONNECTION ✓

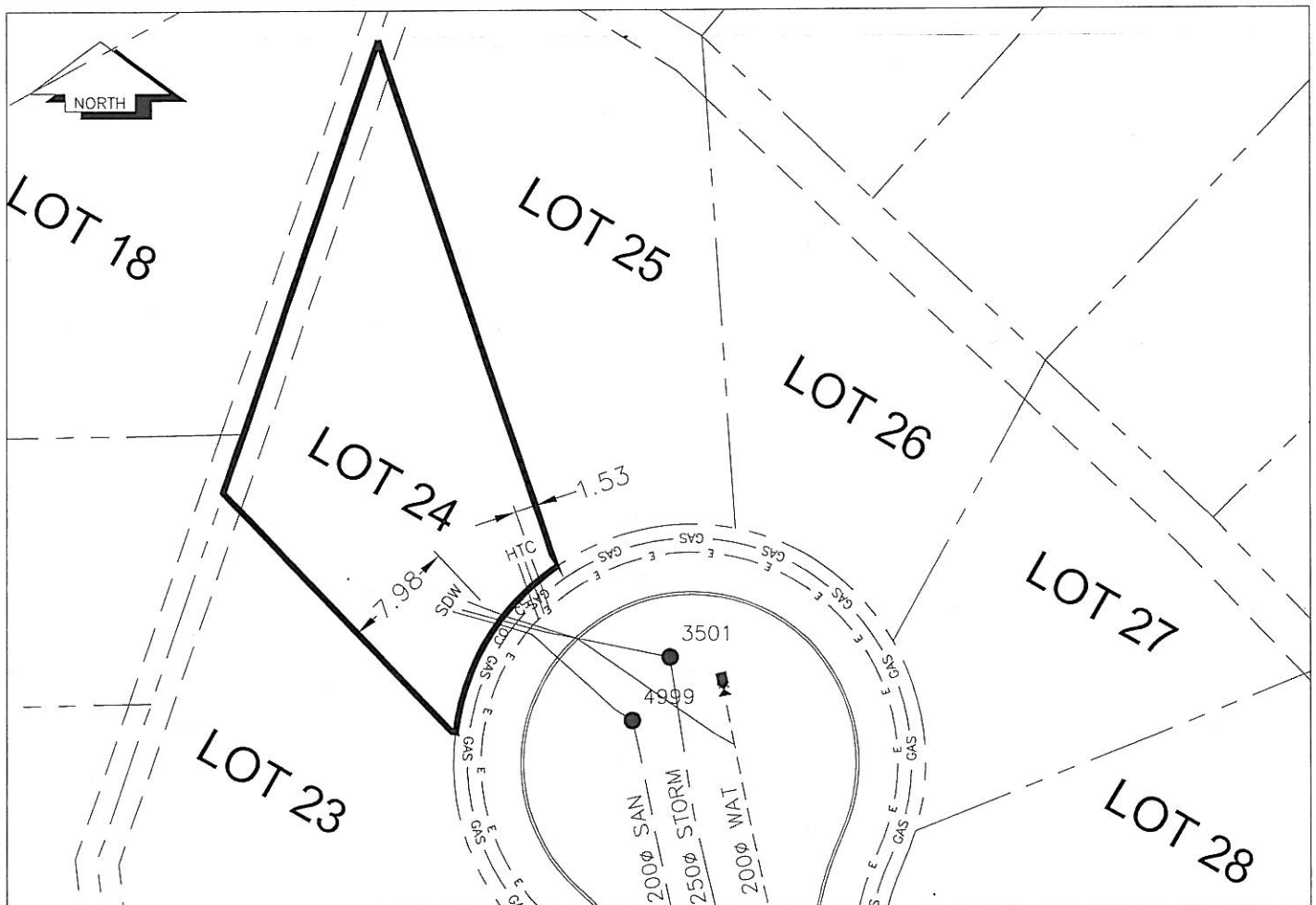
B.C. TELEPHONE 50mm DB2 U/G CONNECTION ✓

B.C. GAS 42 PROP /P.E

Information Sheets: REF. DWGS. L&M ENGINEERING LTD. JOB. 1106-06-04 DWGS. (001-306)

Comments: CS CURB STOP SDW WATER SERVICE HTCH HYDRO SERVICE GAS GAS
CO CLEAN OUT SANITARY SERVICE CABLE SERVICE TELECOMMUNICATIONS E ELECTRICAL

THE INFORMATION CONTAINED HEREIN IS FOR INTERNAL USE ONLY.
NOT TO BE RELIED UPON UNLESS CONFIRMED BY THE SITE INSPECTION AND/OR INVESTIGATION



SANITARY, STORM & WATER SERVICE INVERTS	SANITARY	WATER	STORM
1. Distance from San. M.H. 4999 toward San. M.H. 4999 to lot service connection point is:	0m	N/A	N/A
1a. Distance from Stm. M.H. 3501 toward Stm. M.H. 3501 to lot service connection point is:	N/A	N/A	0m
2. Main Size at connection point is	200mmØ	200mmØ	250mmØ
3. Invert of main at conn. stub pt is	678.90m	678.01m	678.75m
4. Invert at service end is	679.27m	679.20m	679.22m
5. Cover at P/L in meters	2.12m	2.29m	2.17m
6. Survey Date: NOV,14,07 Book Ref.: 1106-06-03 By: FORESIGHT			

SANITARY HISTORY:

DATE INSTALLED: AUGUST 2007

INSTALLED BY: WESTERN INDUSTRIAL CONTRACTORS LTD

WATER HISTORY:

DATE INSTALLED: AUGUST 2007

INSTALLED BY: WESTERN INDUSTRIAL CONTRACTORS LTD

STORM HISTORY:

DATE INSTALLED: AUGUST 2007

INSTALLED BY: WESTERN INDUSTRIAL CONTRACTORS LTD