

City of Prince George
HISTORY SHEET

PID: 027542670

Scale: 1:500

Legal: LOT 16

D.L.: 1605

PLAN: BCP36464

Address: 7642 ST ANDREW PLACE

Sanitary Connection:#	SIZE: 100mmØ	MATERIAL: PVC	INV. 685.71m	CONNECTED
-----------------------	--------------	---------------	--------------	-----------

Water Connection:#	SIZE: 19mmØ	MATERIAL: COPPER	INV. 685.65m	
--------------------	-------------	------------------	--------------	--

Storm Connection:#	SIZE: 100mmØ	MATERIAL: PVC	INV. 685.61m	CONNECTED
--------------------	--------------	---------------	--------------	-----------

Cash Receipt No's:	WATER	SANITARY	STORM
--------------------	-------	----------	-------

CURB FROM PROPERTY LINE	5m	PAVEMENT WIDTH	10m
-------------------------	----	----------------	-----

B.C. HYDRO	75mm DB2	U/G CONNECTION	✓
------------	----------	----------------	---

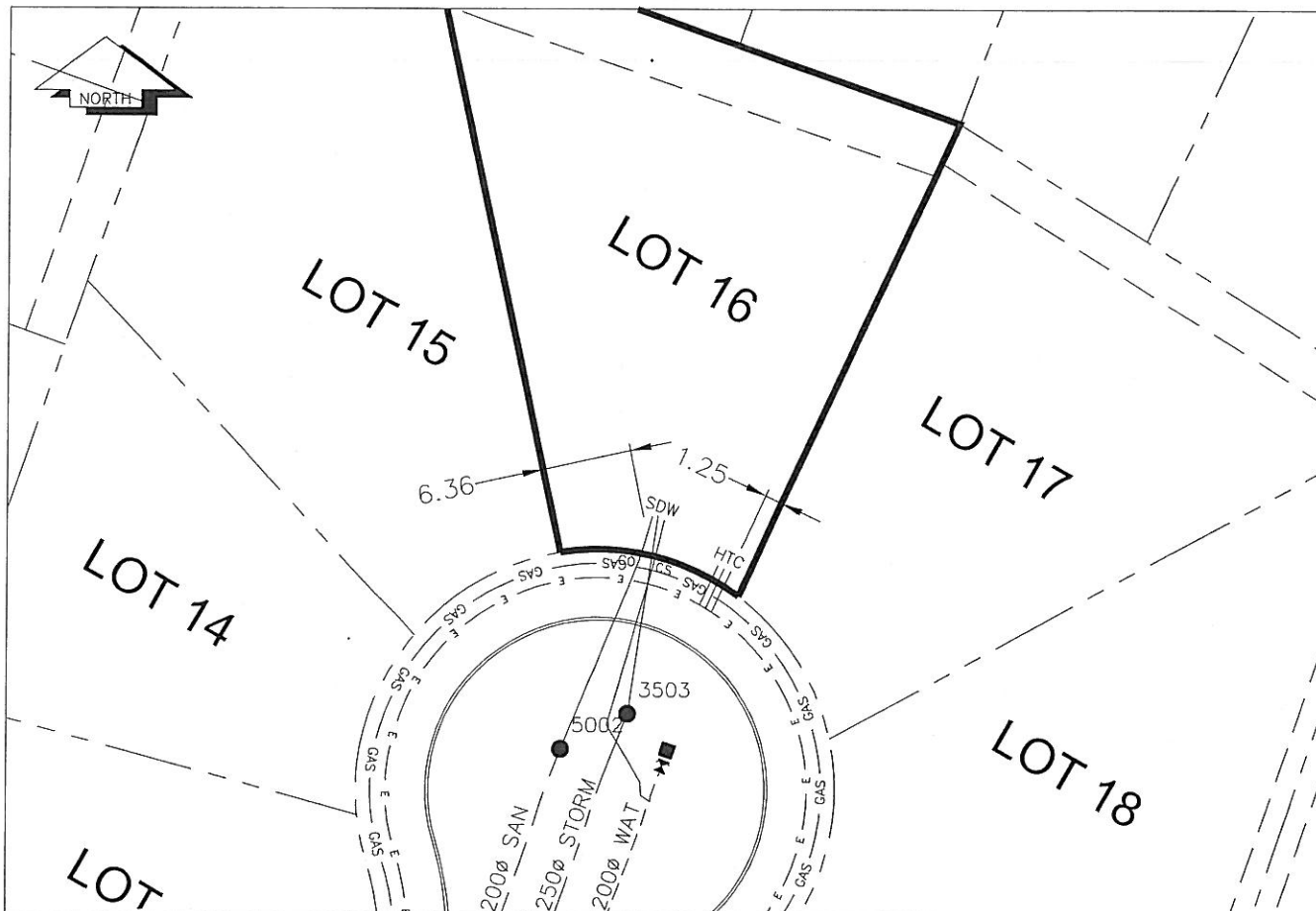
B.C. TELEPHONE	50mm DB2	U/G CONNECTION	✓
----------------	----------	----------------	---

B.C. GAS	42 PROP /P.E		
----------	--------------	--	--

Information Sheets: REF. DWGS. L&M ENGINEERING LTD. JOB. 1106-06-04 DWGS. (001-306)

Comments:	CS _o CURB STOP	SDW WATER SERVICE	HTC HYDRO SERVICE	— GAS — GAS
	CO CLEAN OUT	SDW STORM SERVICE	TCB CABLE SERVICE	— E — ELECTRICAL
		SDW SANITARY SERVICE	TCB TELECOMMUNICATIONS	

THE INFORMATION CONTAINED HEREIN IS FOR INTERNAL USE ONLY.
NOT TO BE RELIED UPON UNLESS CONFIRMED BY THE SITE INSPECTION AND/OR INVESTIGATION



SANITARY, STORM & WATER SERVICE INVERTS	SANITARY	WATER	STORM
1. Distance from San. M.H. 5002 toward San. M.H. 5002 to lot service connection point is:	0m	N/A	N/A
1a.Distance from Str. M.H. 3503 toward Str. M.H. 3503 to lot service connection point is:	N/A	N/A	0m
2. Main Size at connection point is	200mmØ	200mmØ	250mmØ
3. Invert of main at conn. stub pt is	685.18m	684.39m	685.29m
4. Invert at service end is	685.71m	685.65m	685.61m
5. Cover at P/L in meters	2.29m	2.35m	2.21m
6. Survey Date: NOV,14,07 Book Ref.: 1106-06-03 By: FORESIGHT			

SANITARY HISTORY:

DATE INSTALLED: AUGUST 2007

INSTALLED BY: WESTERN INDUSTRIAL CONTRACTORS LTD

WATER HISTORY:

DATE INSTALLED: AUGUST 2007

INSTALLED BY: WESTERN INDUSTRIAL CONTRACTORS LTD

STORM HISTORY:

DATE INSTALLED: AUGUST 2007

INSTALLED BY: WESTERN INDUSTRIAL CONTRACTORS LTD