

City of Prince George
HISTORY SHEET

PID: 027542653

Scale: 1:500

Legal: LOT 15

D.L.: 1605

PLAN: BCP36464

Address: 7639 ST ANDREW PLACE

Sanitary Connection:# SIZE: 100mmØ MATERIAL: PVC INV. 685.39m CONNECTED

Water Connection:# SIZE: 19mmØ MATERIAL: COPPER INV. 685.38m

Storm Connection:# SIZE: 100mmØ MATERIAL: PVC INV. 685.40m CONNECTED

Cash Receipt No's: WATER SANITARY STORM

CURB FROM PROPERTY LINE 5m PAVEMENT WIDTH 10m

B.C. HYDRO 75mm DB2 U/G CONNECTION ✓

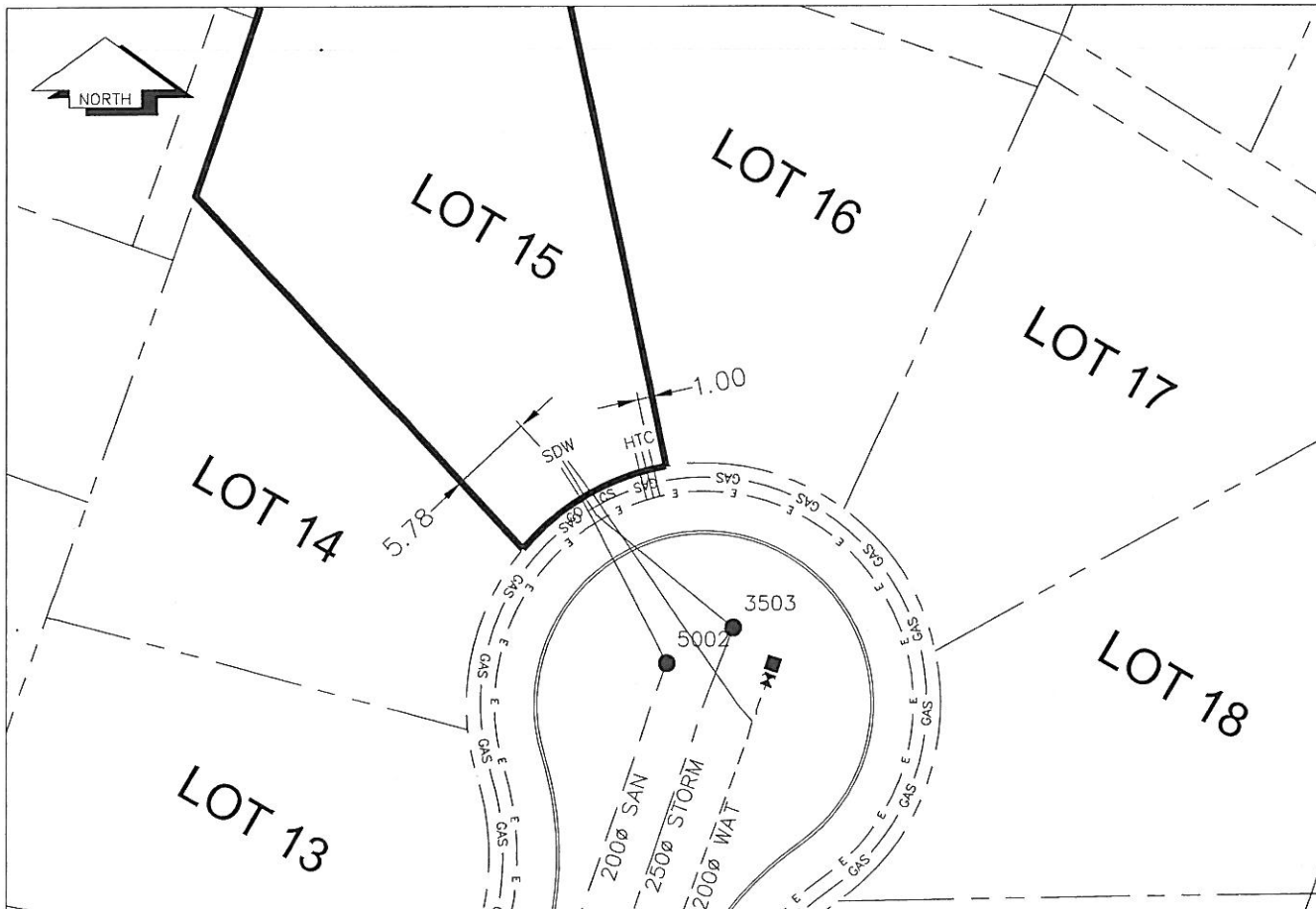
B.C. TELEPHONE 50mm DB2 U/G CONNECTION ✓

B.C. GAS 42 PROP /P.E

Information Sheets: REF. DWGS. L&M ENGINEERING LTD. JOB. 1106-06-04 DWGS. (001-306)

Comments: CS CURB STOP SDW WATER SERVICE TOH HYDRO SERVICE GAS GAS
CO CLEAN OUT STORM SERVICE CABLE SERVICE TELECOMMUNICATIONS E ELECTRICAL
SANITARY SERVICE

THE INFORMATION CONTAINED HEREIN IS FOR INTERNAL USE ONLY.
NOT TO BE RELIED UPON UNLESS CONFIRMED BY THE SITE INSPECTION AND/OR INVESTIGATION



| SANITARY, STORM & WATER SERVICE INVERTS | SANITARY | WATER | STORM |
|--|----------|---------|---------|
| 1. Distance from San. M.H. 5002 toward San. M.H. 5002 to lot service connection point is: | 0m | N/A | N/A |
| 1a. Distance from Stm. M.H. 3503 toward Stm. M.H. 3503 to lot service connection point is: | N/A | N/A | 0m |
| 2. Main Size at connection point is | 200mmØ | 200mmØ | 250mmØ |
| 3. Invert of main at conn. stub pt is | 685.19m | 684.40m | 685.04m |
| 4. Invert at service end is | 685.39m | 685.38m | 685.40m |
| 5. Cover at P/L in meters | 2.45m | 2.56m | 2.44m |
| 6. Survey Date: NOV,14,07 Book Ref.: 1106-06-03 By: FORESIGHT | | | |
| | | | |
| | | | |
| | | | |
| | | | |
| | | | |
| | | | |
| | | | |
| | | | |

SANITARY HISTORY:

DATE INSTALLED: AUGUST 2007

INSTALLED BY: WESTERN INDUSTRIAL CONTRACTORS LTD

WATER HISTORY:

DATE INSTALLED: AUGUST 2007

INSTALLED BY: WESTERN INDUSTRIAL CONTRACTORS LTD

STORM HISTORY:

DATE INSTALLED: AUGUST 2007

INSTALLED BY: WESTERN INDUSTRIAL CONTRACTORS LTD