

**City of Prince George**  
**HISTORY SHEET**

PID: 027542611

Scale: 1:500

Legal: LOT 11

D.L.: 1605

PLAN: BCP36464

Address: 7687 ST ANDREW PLACE

Sanitary Connection:#	SIZE: 100mmØ	MATERIAL: PVC	INV. 684.75m	CONNECTED
-----------------------	--------------	---------------	--------------	-----------

Water Connection:#	SIZE: 19mmØ	MATERIAL: COPPER	INV. 684.74m	
--------------------	-------------	------------------	--------------	--

Storm Connection:#	SIZE: 100mmØ	MATERIAL: PVC	INV. 684.73m	CONNECTED
--------------------	--------------	---------------	--------------	-----------

Cash Receipt No's:	WATER	SANITARY	STORM
--------------------	-------	----------	-------

CURB FROM PROPERTY LINE 5m

PAVEMENT WIDTH 10m

B.C. HYDRO	75mm DB2	U/G CONNECTION	✓
------------	----------	----------------	---

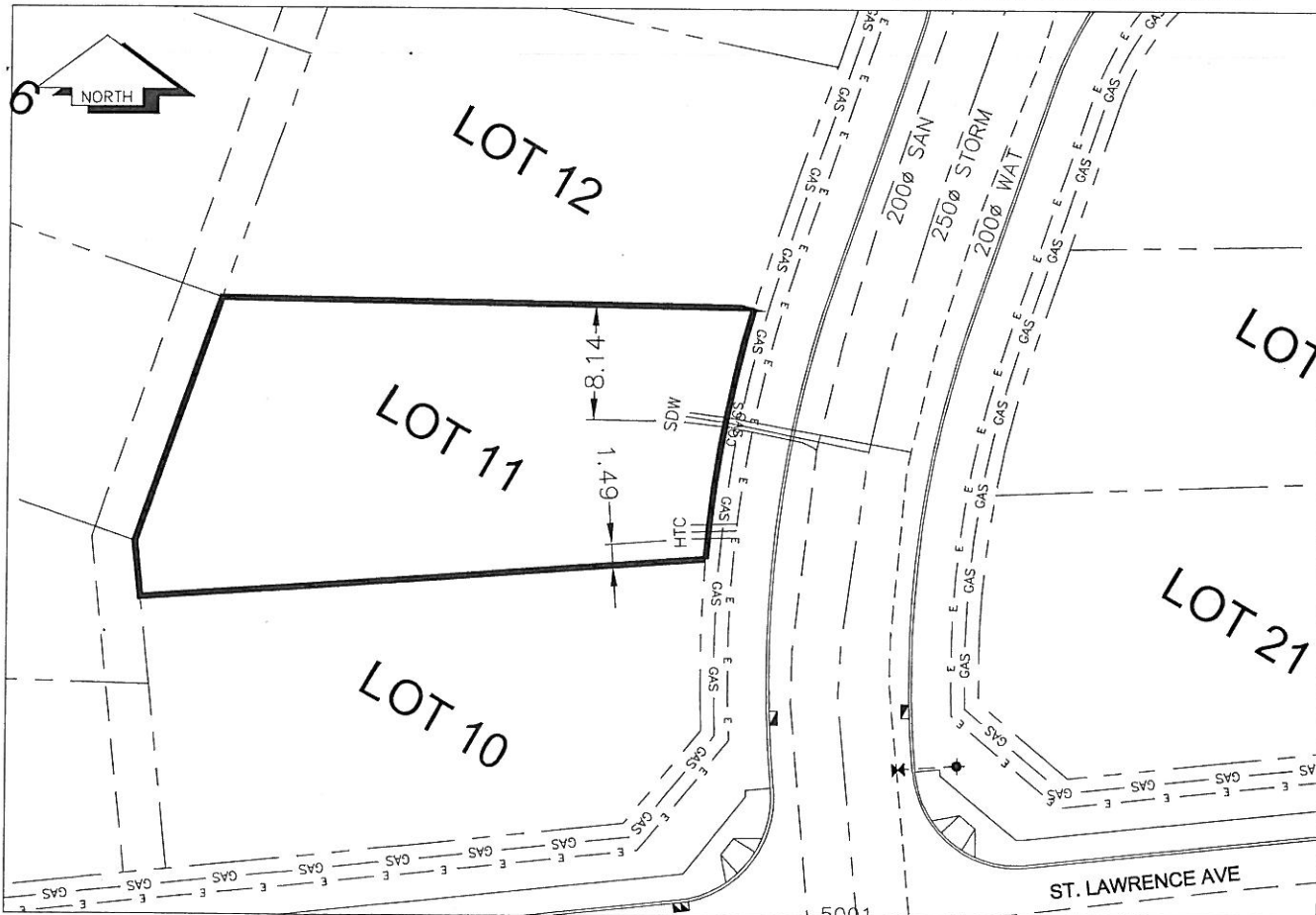
B.C. TELEPHONE	50mm DB2	U/G CONNECTION	✓
----------------	----------	----------------	---

B.C. GAS	42 PROP /P.E		
----------	--------------	--	--

Information Sheets: REF. DWGS. L&M ENGINEERING LTD. JOB. 1106-06-04 DWGS. (001-306)

Comments:	CS CURB STOP	SDW WATER SERVICE	TOH HYDRO SERVICE	GAS GAS
	CO CLEAN OUT			
		SANITARY SERVICE	TELECOMMUNICATIONS	

THE INFORMATION CONTAINED HEREIN IS FOR INTERNAL USE ONLY.  
NOT TO BE RELIED UPON UNLESS CONFIRMED BY THE SITE INSPECTION AND/OR INVESTIGATION



SANITARY, STORM & WATER SERVICE INVERTS	SANITARY	WATER	STORM
1. Distance from San. M.H. 5001 toward San. M.H. 5002 to lot service connection point is:	34m	N/A	N/A
1a. Distance from Strm. M.H. 3502 toward Strm. M.H. 3503 to lot service connection point is:	N/A	N/A	35m
2. Main Size at connection point is	200mmØ	200mmØ	250mmØ
3. Invert of main at conn. stub pt is	683.50m	684.08m	683.94m
4. Invert at service end is	684.73m	684.74m	684.73m
5. Cover at P/L in meters	2.28m	2.37m	2.28m
6. Survey Date: NOV,14,07 Book Ref.: 1106-06-03 By: FORESIGHT			

**SANITARY HISTORY:**

DATE INSTALLED: AUGUST 2007

INSTALLED BY: WESTERN INDUSTRIAL CONTRACTORS LTD

**WATER HISTORY:**

DATE INSTALLED: AUGUST 2007

INSTALLED BY: WESTERN INDUSTRIAL CONTRACTORS LTD

**STORM HISTORY:**

DATE INSTALLED: AUGUST 2007

INSTALLED BY: WESTERN INDUSTRIAL CONTRACTORS LTD