

# City of Prince George

## HISTORY SHEET

PID: 027542602

Scale: 1:500

Legal: LOT 10

D.L.: 1605

PLAN: BCP36464

Address: 7699 ST ANDREW PLACE

Sanitary Connection:#	SIZE: 100mmØ	MATERIAL: PVC	INV. 684.48m	CONNECTED
-----------------------	--------------	---------------	--------------	-----------

Water Connection:#	SIZE: 19mmØ	MATERIAL: COPPER	INV. 684.49m	
--------------------	-------------	------------------	--------------	--

Storm Connection:#	SIZE: 100mmØ	MATERIAL: PVC	INV. 684.47m	CONNECTED
--------------------	--------------	---------------	--------------	-----------

Cash Receipt No's:	WATER	SANITARY	STORM
--------------------	-------	----------	-------

CURB FROM PROPERTY LINE	5m	PAVEMENT WIDTH	10m
-------------------------	----	----------------	-----

B.C. HYDRO	75mm DB2	U/G CONNECTION	✓
------------	----------	----------------	---

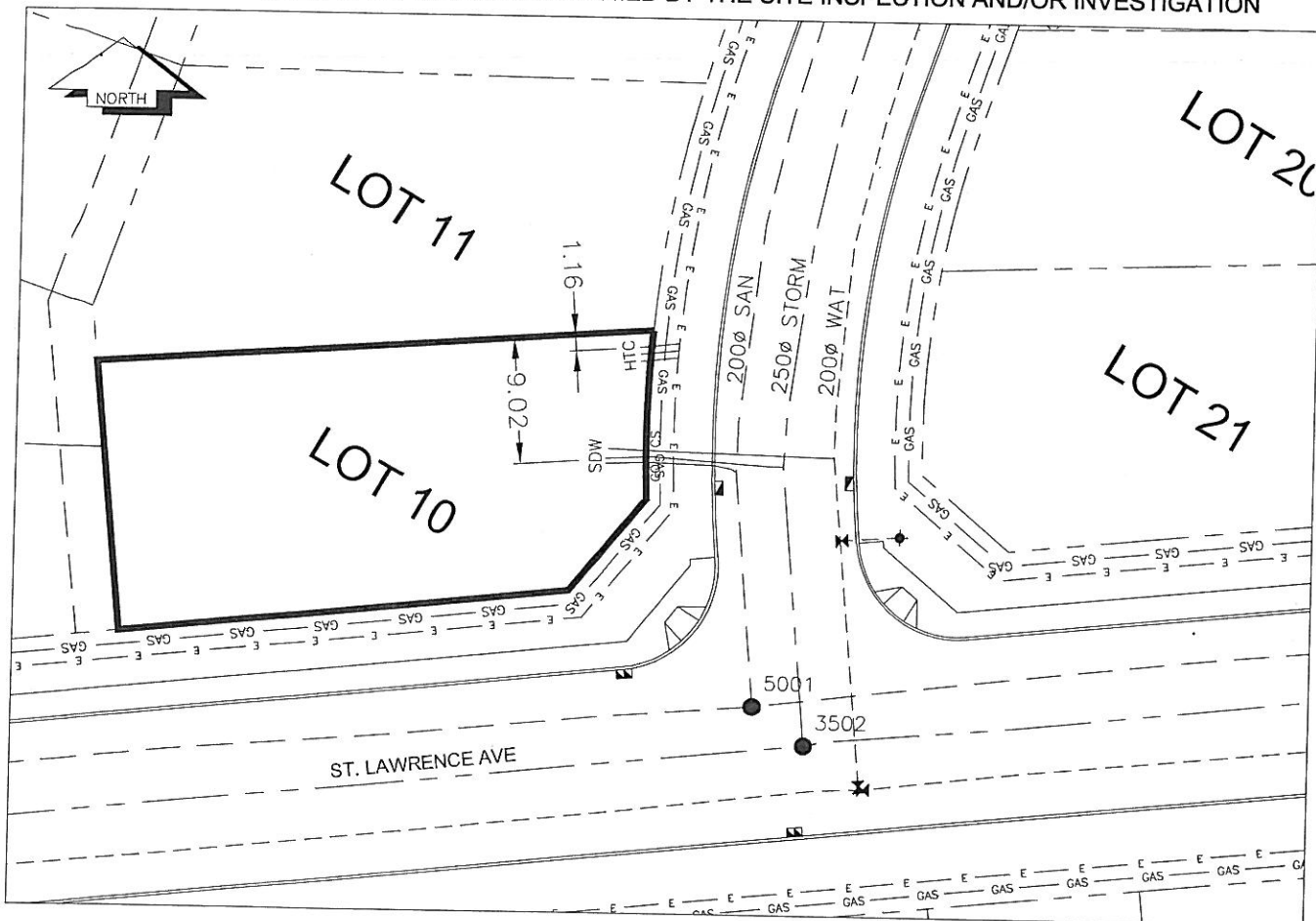
B.C. TELEPHONE	50mm DB2	U/G CONNECTION	✓
----------------	----------	----------------	---

B.C. GAS	42 PROP /P.E
----------	--------------

Information Sheets: REF. DWGS. L&M ENGINEERING LTD. JOB. 1106-06-04 DWGS. (001-306)

Comments: CS CURB STOP CO CLEAN OUT SDW WATER SERVICE STORM SERVICE SANITARY SERVICE HTC HYDRO SERVICE CABLE SERVICE TELECOMMUNICATIONS GAS GAS ELECTRICAL

THE INFORMATION CONTAINED HEREIN IS FOR INTERNAL USE ONLY.  
NOT TO BE RELIED UPON UNLESS CONFIRMED BY THE SITE INSPECTION AND/OR INVESTIGATION



# SANITARY, STORM & WATER SERVICE INVERTS

	SANITARY	WATER	STORM
1. Distance from San. M.H. 5001 toward San. M.H. 5002 to lot service connection point is:	16m	N/A	N/A
1a Distance from Stm. M.H. 3502 toward Stm. M.H. 3503 to lot service connection point is:	N/A	N/A	19m
2. Main Size at connection point is	200mmØ	200mmØ	250mmØ
3. Invert of main at conn. stub pt is	682.95m	683.97m	683.56m
4. Invert at service end is	684.48m	684.49m	684.47m
5. Cover at P/L in meters	2.37m	2.46m	2.38m
6. Survey Date: NOV,14.07 Book Ref.: 1106-06-03 By: FORESIGHT			

## SANITARY HISTORY:

DATE INSTALLED: AUGUST 2007

INSTALLED BY: WESTERN INDUSTRIAL CONTRACTORS LTD

## WATER HISTORY:

DATE INSTALLED: AUGUST 2007

INSTALLED BY: WESTERN INDUSTRIAL CONTRACTORS LTD

## STORM HISTORY:

DATE INSTALLED: AUGUST 2007

INSTALLED BY: WESTERN INDUSTRIAL CONTRACTORS LTD