

**City of Prince George**  
**HISTORY SHEET**

PID: 027542572

Scale: 1:500

Legal: LOT 7

D.L.: 1605

PLAN: BCP36464

Address: 7676 EASTVIEW STREET

Sanitary Connection:#	SIZE: 100mmØ	MATERIAL PVC	INV. 691.24m	CONNECTED
-----------------------	--------------	--------------	--------------	-----------

Water Connection:#	SIZE: 19mmØ	MATERIAL: COPPER	INV. 691.06m	
--------------------	-------------	------------------	--------------	--

Storm Connection:#	SIZE 100mmØ	MATERIAL PVC	INV. 691.20m	CONNECTED
--------------------	-------------	--------------	--------------	-----------

Cash Receipt No's:	WATER	SANITARY	STORM
--------------------	-------	----------	-------

CURB FROM PROPERTY LINE	5m	PAVEMENT WIDTH	10m
-------------------------	----	----------------	-----

B.C. HYDRO	75mm DB2	U/G CONNECTION	✓
------------	----------	----------------	---

B.C. TELEPHONE	50mm DB2	U/G CONNECTION	✓
----------------	----------	----------------	---

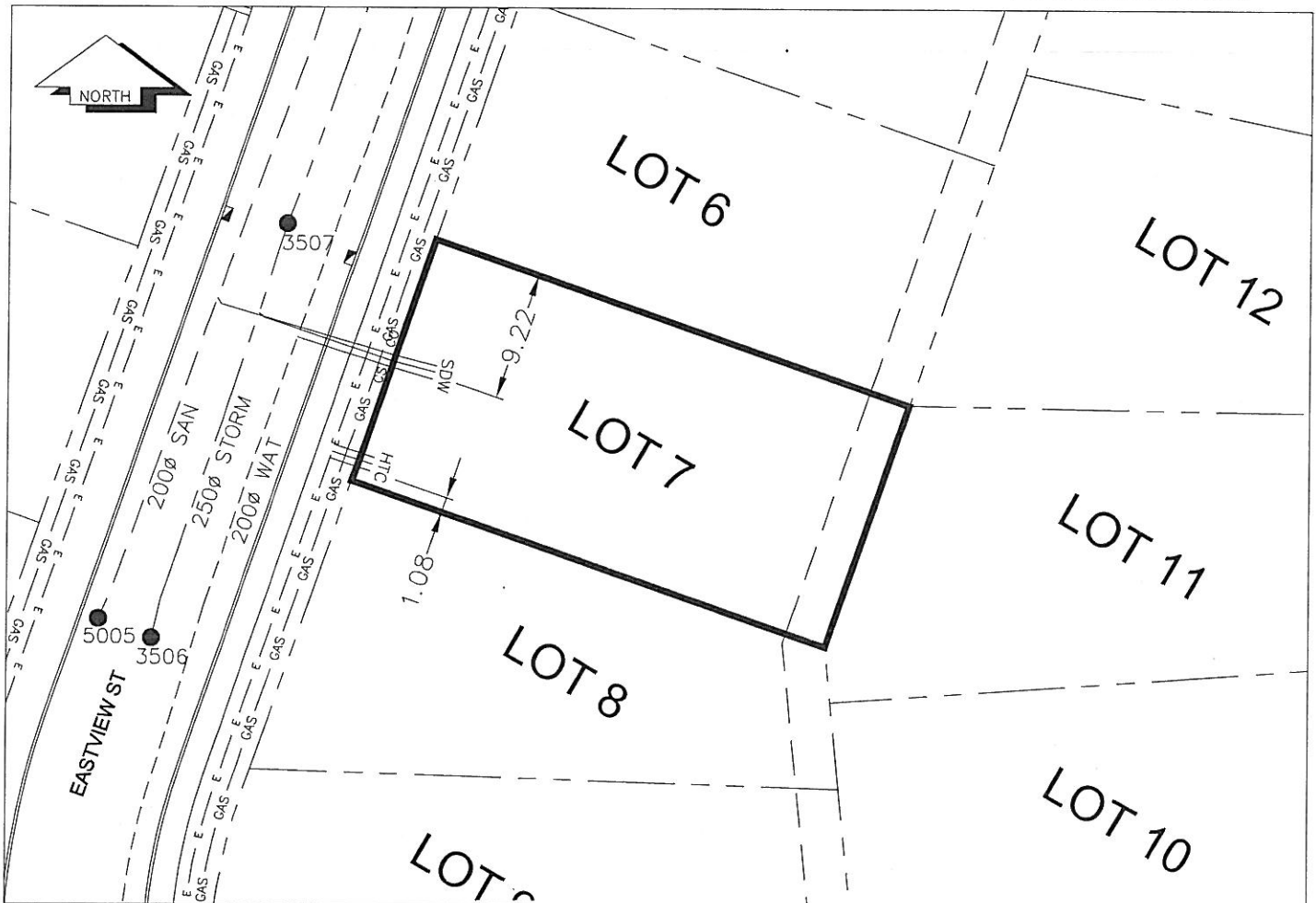
B.C. GAS	42 PROP /P.E		
----------	--------------	--	--

Information Sheets: REF. DWGS. L&M ENGINEERING LTD. JOB. 1106-06-04 DWGS. (001-306)

Comments:	CS CURB STOP	SDW WATER SERVICE	TCH HYDRO SERVICE	— GAS — GAS
	CO CLEAN OUT			
		SDW SANITARY SERVICE	TCH TELECOMMUNICATIONS	

THE INFORMATION CONTAINED HEREIN IS FOR INTERNAL USE ONLY.

NOT TO BE RELIED UPON UNLESS CONFIRMED BY THE SITE INSPECTION AND/OR INVESTIGATION



SANITARY, STORM & WATER SERVICE INVERTS	SANITARY	WATER	STORM
1. Distance from San. M.H. 5005 toward San. M.H. Stub to lot service connection point is:	22.5m	N/A	N/A
1a.Distance from Stm. M.H. 3506 toward Stm. M.H. 3507 to lot service connection point is:	N/A	N/A	22.5m
2. Main Size at connection point is	200mmØ	200mmØ	250mmØ
3. Invert of main at conn. stub pt is	690.55m	690.03m	690.75m
4. Invert at service end is	691.24m	691.06m	691.20m
5. Cover at P/L in meters	2.04m	2.32m	2.08m
6. Survey Date: NOV,14,07 Book Ref.: 1106-06-03 By: FORESIGHT			

**SANITARY HISTORY:**

DATE INSTALLED: AUGUST 2007

INSTALLED BY: WESTERN INDUSTRIAL CONTRACTORS LTD

**WATER HISTORY:**

DATE INSTALLED: AUGUST 2007

INSTALLED BY: WESTERN INDUSTRIAL CONTRACTORS LTD

**STORM HISTORY:**

DATE INSTALLED: AUGUST 2007

INSTALLED BY: WESTERN INDUSTRIAL CONTRACTORS LTD