

City of Prince George

HISTORY SHEET

PID: 027141110

Scale: 1:500

Legal: LOT 7

D.L.: 905

PLAN: BCP31387

Address: 4146 PRUDENTE RD

Sanitary Connection:#	SIZE: 100mmØ	MATERIAL: PVC	INV. 641.95m	CONNECTED
-----------------------	--------------	---------------	--------------	-----------

Water Connection:#	SIZE: 19mmØ	MATERIAL: COPPER	INV. 641.82m	METER
--------------------	-------------	------------------	--------------	-------

Storm Connection:#	SIZE: 100mmØ	MATERIAL: PVC	INV. 641.90m	CONNECTED
--------------------	--------------	---------------	--------------	-----------

Cash Receipt No's:	WATER	SANITARY	STORM
--------------------	-------	----------	-------

CURB FROM PROPERTY LINE	5.0m	PAVEMENT WIDTH	10.0m
-------------------------	------	----------------	-------

B.C. HYDRO	75mm DB2	U/G CONNECTION	✓
------------	----------	----------------	---

B.C. TELEPHONE	50mm DB2	U/G CONNECTION	✓
----------------	----------	----------------	---

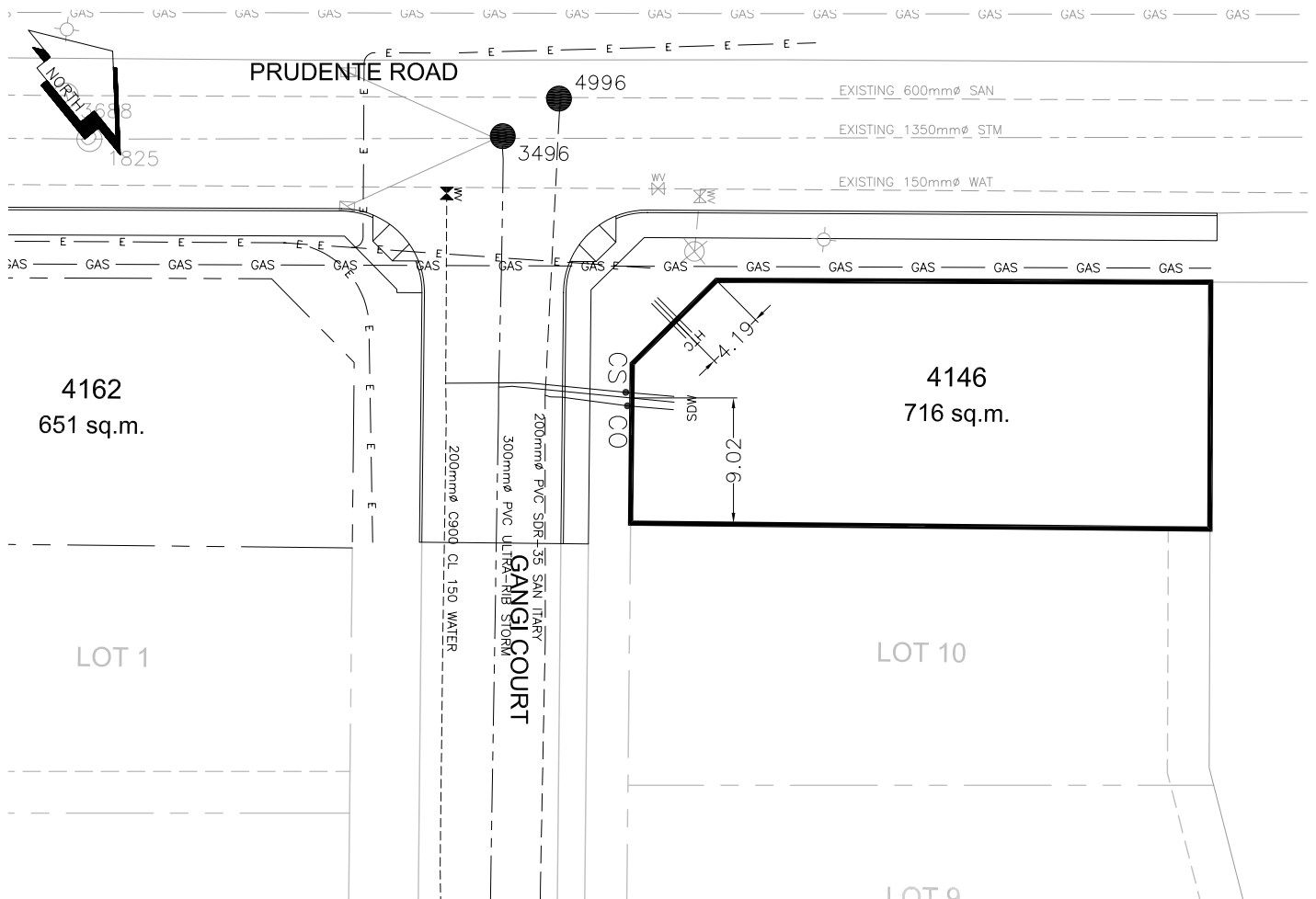
B.C. GAS	42 PROP/P.E.		
----------	--------------	--	--

Information Sheets: REFERENCE DRAWINGS L&MENGINEERING LIMITED JOB NO. 1292-01-04

Comments: CS • CURB STOP
CO • CLEAN OUT
SDW WATER SERVICE
SDS STORM SERVICE
SDS SANITARY SERVICE
TCH HYDRO SERVICE
TCH CABLE SERVICE
TCH TELECOMMUNICATIONS
GAS GAS
E ELECTRICAL

THE INFORMATION CONTAINED HEREIN IS FOR INTERNAL USE ONLY.

NOT TO BE RELIED UPON UNLESS CONFIRMED BY THE SITE INSPECTION AND/OR INVESTIGATION



SANITARY, STORM & WATER SERVICE INVERTS	SANITARY	WATER	STORM
1. Distance from San. M.H. <u>4996</u> toward San. M.H. <u>4997</u> to lot service connection point is:	42.70m	-	-
1a. Distance from Stm. M.H. <u>3496</u> toward Stm. M.H. <u>3497</u> to lot service connection point is:	-	-	36.10m
2. Main Size at connection point is	200mmØ	200mmØ	300mmØ
3. Invert of main at conn. stub pt is	640.65m	640.98m	640.43m
4. Invert at service end is	641.95m	641.82m	641.90m
5. Cover at P/I in meters	2.26m	2.37m	2.24m
6. Survey Date: - Book Ref.: - By: FORESIGHT SURVEY & DESIGN Ltd.			

SANITARY HISTORY:

DATE INSTALLED: JUNE 2007

INSTALLED BY: WESTERN INDUSTRIAL CONTRACTORS LTD

WATER HISTORY:

DATE INSTALLED: JUNE 2007

INSTALLED BY: WESTERN INDUSTRIAL CONTRACTORS LTD

STORM HISTORY:

DATE INSTALLED: JUNE 2007

INSTALLED BY: WESTERN INDUSTRIAL CONTRACTORS LTD