



City of Prince George History Sheet

PID:	026801540
MU:	101410
WO:	72405

Civic Address: 8087 Hart Highway

Legal Description: Lot: A District Lot: 2424 Plan: BCP25944

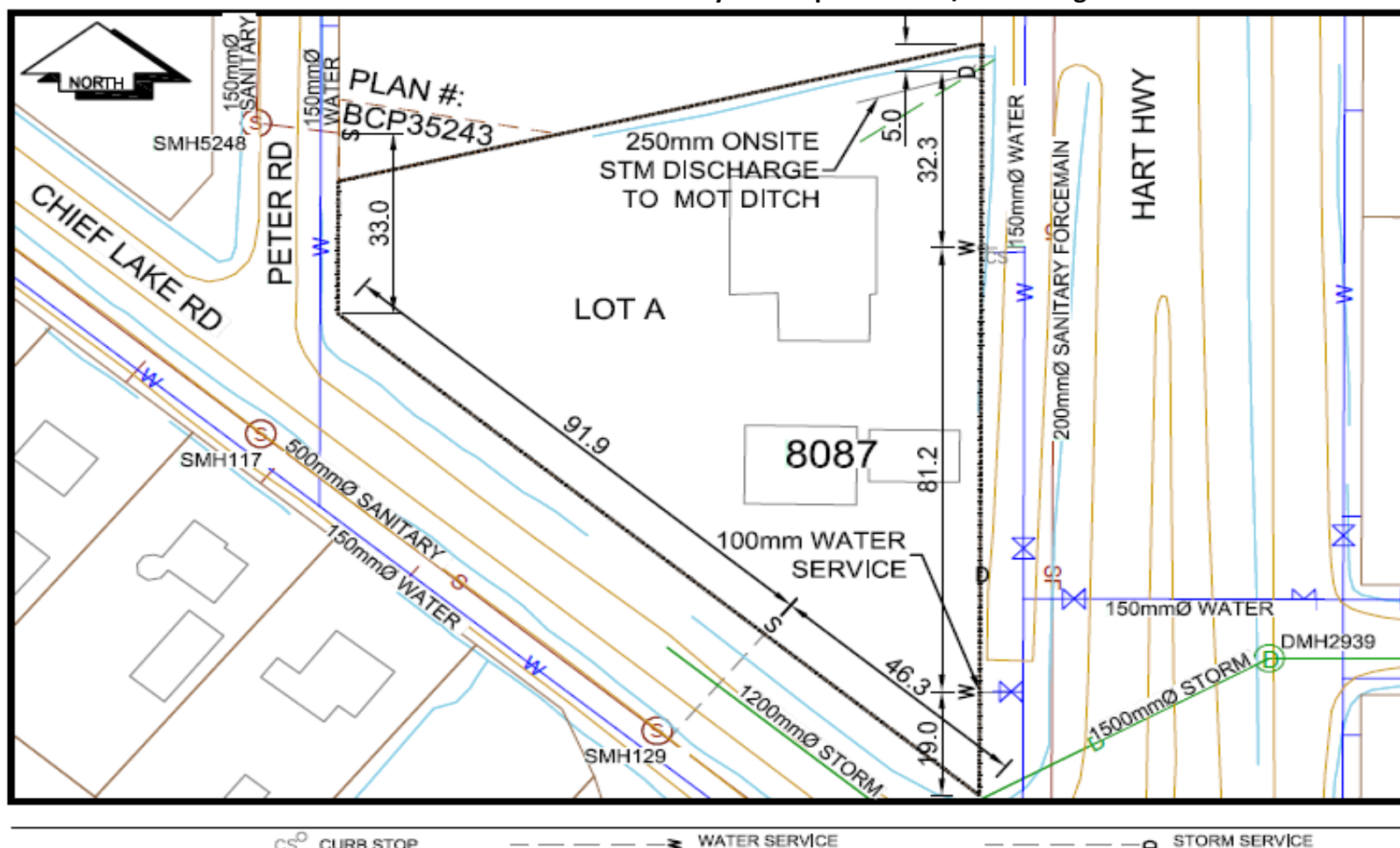
Service Type	Diameter (mm)	Material	Invert Elev at MH (m)	Invert Elev at property line (m)	Invert Elev at service end (m)	Distance into property (m)	Installation Date
Sanitary - S	100mm	PVC	-	-	-	-	November 1979
Sanitary - W	150mm	PVC	750.01	750.08	-	-	November 2014
Water-to store	100mm	PVC	-	-	-	-	August 2008
Water-to car wash	100mm	PVC	-	747.56	-	-	August 2013
Storm-to ditch	250mm	PVC	-	-	-	-	August 2013

Service Connection Location				Sanitary (m)	Storm (m)
Distance from downstream San MH	130	towards upstream San MH	129	34.4	
150mm Sanitary connected to San MH 5248				-	
Distance from downstream Stm MH	-	towards upstream Stm MH	-		

Power	Size	Communications	Size	Cable	Size	Gas	Size
BC Hydro	-	Telus	-	Shaw	-	FortisBC	-
Overhead Service		Overhead Service		Overhead Service			

Installed by:	City of Prince George forces	Survey Date:	-
Comments:	Storm drainage discharged to frontage road ditch at NE property corner.		
	100mm Sanitary service to Chief Lake Rd active - locate confirmed November 2017		


NOT TO SCALE The information contained herein is for internal use only.
Not to be relied on unless confirmed by site inspection and/or investigation.



CS CURB STOP --- WATER SERVICE --- STORM SERVICE

LEGEND:

 CLEAN OUT

 SANITARY SERVICE

 GAS

NOT TO SCALE