

CITY OF PRINCE GEORGE HISTORY SHEET

SHEET No. #

PID 026784726

ROLL No. #

LEGAL: LOT C, BLOCK

D.L.8180
CARIBOO DISTRICT

PLAN BCP25328

ADDRESS: 2150 FERRY AVENUE

SANITARY CONNECTION:	SAN 1	200Ø	PVC DR35	INV.	586.358	CONNECTED
	SAN 2	200Ø	PVC DR35	INV.	586.130	CONNECTED

WATER CONNECTION:	FROM MAIN:	200 Ø	DUCTILE IRON	INV.	585.864	METER:
-------------------	------------	-------	--------------	------	---------	--------

STORM CONNECTION:	STORM 1	600Ø	STEEL ULTRA FLO	INV.	586.888	CONNECTED
	STORM 2	600Ø	STEEL ULTRA FLO	INV.	586.535	CONNECTED

CASH RECEIPT No: # WATER - SANITARY - STORM

CURB FROM PROPERTY LINE: 3.8m

PAVEMENT WIDTH 12.4m

B.C. HYDRO: -

U/G CONNECTION

B.C. TELEPHONE -

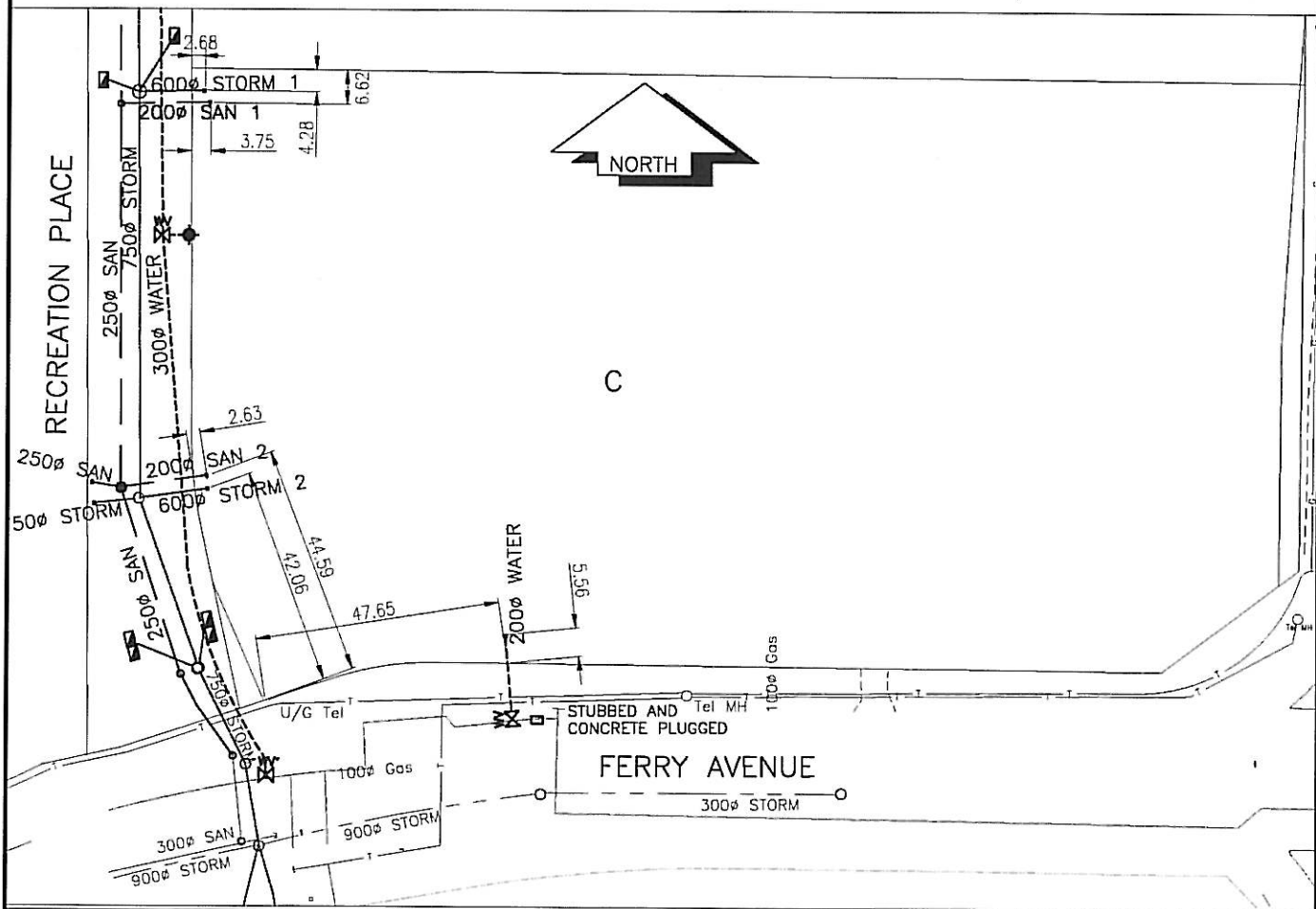
U/G CONNECTION

B.C. GAS -

INFORMATION SHEETS: -

COMMENTS: -

THE INFORMATION CONTAINED HEREIN IS FOR EXTERNAL USE ONLY
NOT TO BE RELIED UPON UNLESS CONFIRMED BY THE INSPECTION AND/OR INVESTIGATION



1. Distance from M.H.	to connection point is	m toward M.H.	SANITARY	WATER	STORM
2. Calculated invert of main to connection point is					
3. Main Size at connection point is	mm				
4.Conn. Invert at half diameter (Crown) of main is					
5. Add to (4) allowance of 0.2 for 1/8 bend. Adjusted invert now					
6. Dist. from main to P/L equals	m at	m/m gives rise of			
7. Item (5) plus (6) equals Calculated Elev. of conn. inv. at P/L equals					
13. Elev. of ref. hub top					
14. Elev. of invert at P/L line			SAN 1 586.358m SAN 2 586.130m	585.864m	STM 1 586.888m STM 2 586.535m
15. Difference or cut below at property line			SAN 1 2.677m SAN 2 1.834m	2.040m	STM 1 2.290m STM 2 1.490m
16. Survey date	JUNE 2007	Book Ref	by		
17. Cut at P/L in metres					

Sanitary History:

INSTALLED IN 2006

Water History:

INSTALLED IN 2006

Storm History:

INSTALLED IN 2006