



# City of Prince George History Sheet

PID:	026446979
SD/MU:	
WO:	

Civic Address: 725 Alward St

Legal Description: Lot: PCL A District Lot: 343 Plan: BCP19859

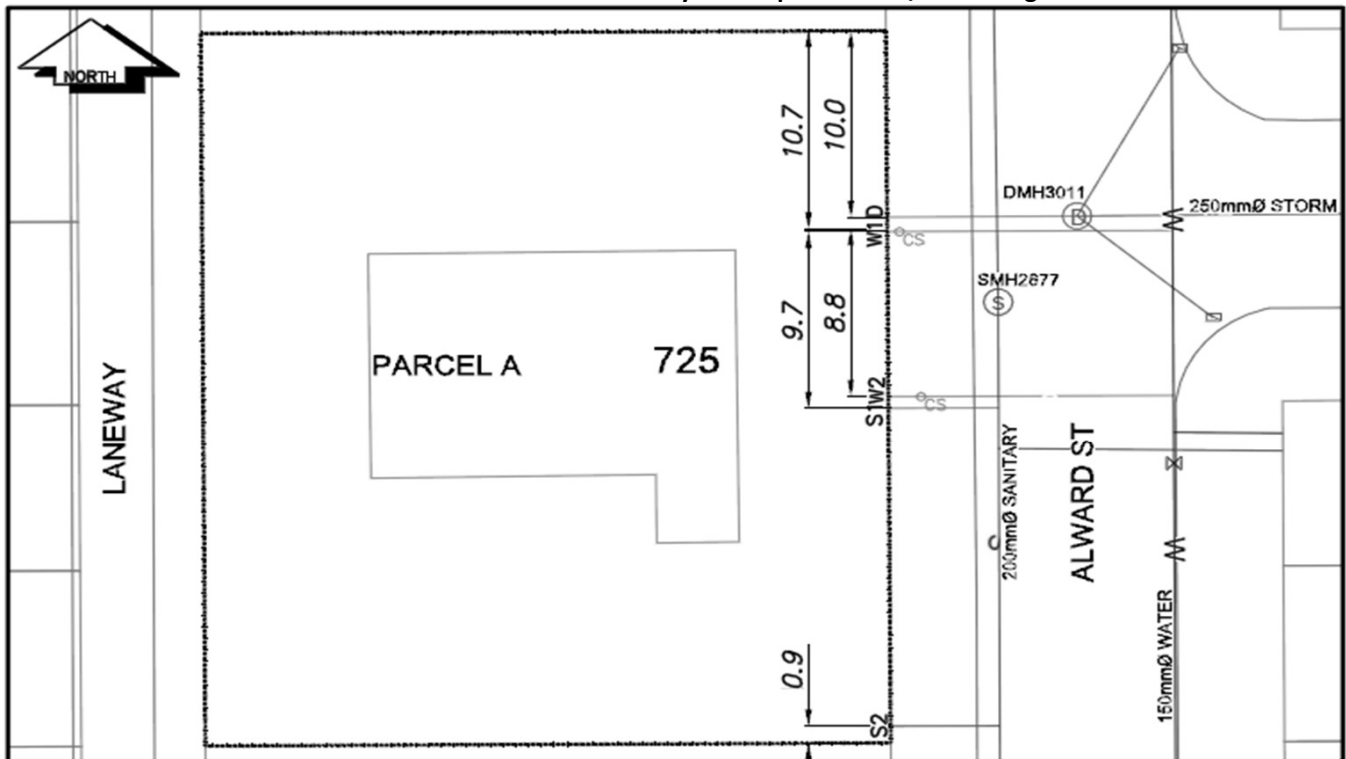
Service Type	Diameter (mm)	Material	Invert Elev at main (m)	Invert Elev at property line (m)	Invert Depth at service end (m)	Distance into property (m)	Installation Date
Sanitary = (S1)	100mm	AC	-	586.09	1.52	-	December 1957
Sanitary - (S2)	100mm	AC	-	587.16	2.94	-	December 1957
Water - (W1)	25mm	Copper	-	-	-	-	December 1957
Water - (W2)	25mm	Copper	-	-	-	-	December 1957
Storm	250mm	PVC	-	-	-	-	August 1997







Service Connection Location				Sanitary (m)	Storm (m)
Distance from downstream San MH	2677	towards upstream San MH	2672	12.30	
Distance from downstream San MH	2677	towards upstream San MH	2672	4.20	
Distance from downstream San MH	1977	towards upstream San MH	2677	86.47	
250mm Storm service connected to Stm MH3011				-	

Power	Size	Communications	Size	Cable	Size	Gas	Size
BC Hydro	-	Telus	-	Shaw	-	FortisBC	-
Overhead Service		Overhead Service		Overhead Service			

Installed by:	Survey Date:	-
Comments: Storm service location confirmed October 26, 2018.		

**NOT TO SCALE** The information contained herein is for internal use only.  
Not to be relied on unless confirmed by site inspection and/or investigation.



LEGEND:		CURB STOP		WATER SERVICE		STORM SERVICE
		CLEAN OUT		SANITARY SERVICE		GAS
		WATER VALVE		FIRE HYDRANT		ENCUMBRANCE

**NOT TO SCALE**